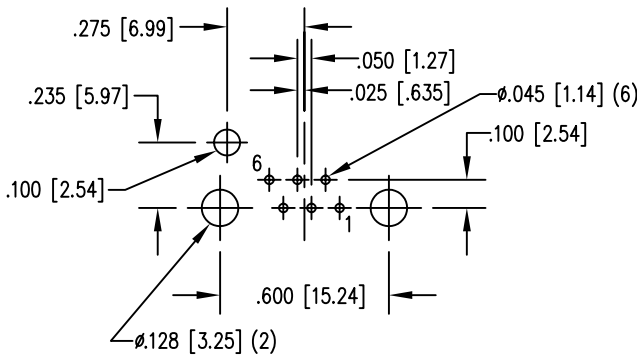
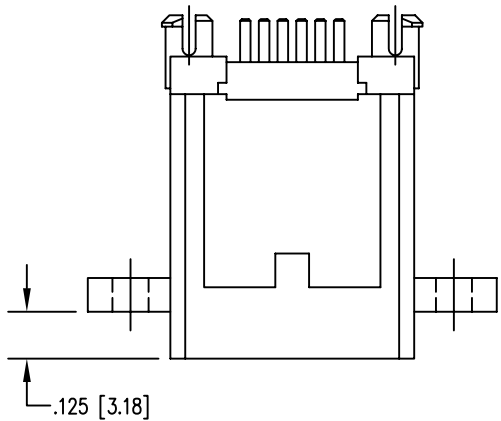
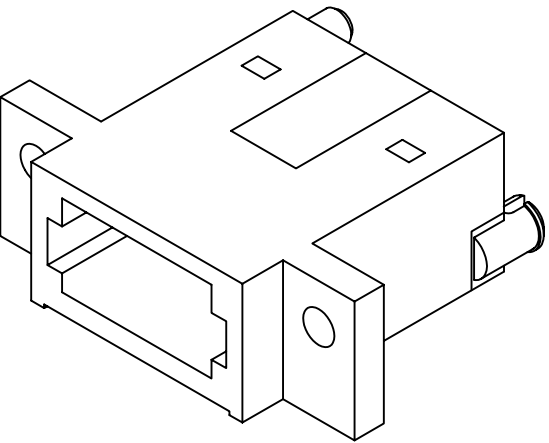
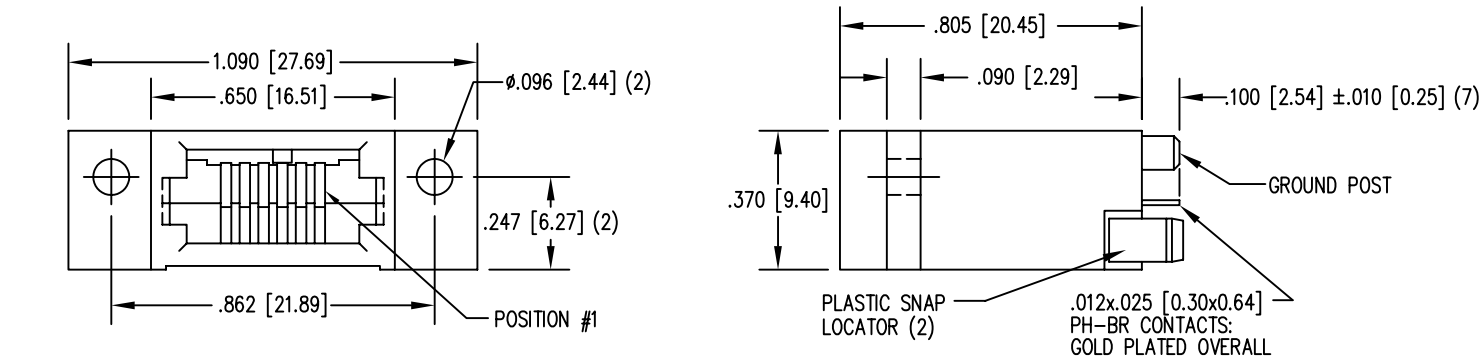
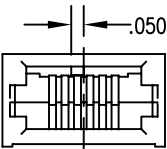
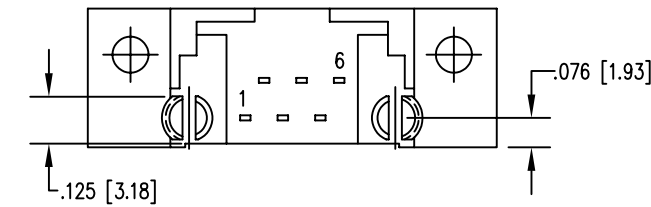


| DATE | REV | ECN | APP'D. BY |
|---------|-----|------|-----------|
| 1/25/06 | A4 | 7453 | JM |
| 4/11/06 | A5 | 7579 | TRM |
| | | | |
| | | | |



PC BOARD TOP VIEW



DIMENSIONS FOR KEY-3



- NOTES:
- CONNECTOR MATERIALS:
HOUSING: THERMOPLASTIC UL94 V-0
CONTACTS/SHIELD: COPPER ALLOY
SHIELD PLATING: NICKEL OR TIN
CONTACT PLATING: SELECTIVE GOLD IN CONTACT AREA
SEE CHART FOR PART NUMBER
 - FOR PRODUCT SPECIFICATIONS SEE PR026-01.

| | |
|-----------------------------------|----------------------|
| 30 MICRO-INCHES [0.76um] | SS-620606-FF-P1-3-4/ |
| CONTACT PLATING IN MATING AREA | PART NUMBER |

| | | | | | |
|--|--|--|--|---|--|
| THIRD ANGLE PROJECTION | | | | <h1>Bel Stewart Connector</h1> <p>11118 Susquehanna Trail South Glen Rock, PA 17327-9199 (717) 235-7512 Fax: (717) 235-7954 http://www.stewartconnector.com</p> | |
| DO NOT SCALE DRAWING DRAWING IS SUBJECT TO CHANGE WITHOUT NOTICE | | | | TITLE: 6 X6 COMPU-SHIELD JACK FINAL ASSY, FLANGED, KEYED, #4-40 TAP ON $\phi .096$ HOLES | |
| DIMENSIONS: INCHES [METRIC] | | | | THIS DRAWING AND THE SUBJECT MATTER SHOWN THEREON ARE CONFIDENTIAL AND THE PROPRIETARY PROPERTY OF BEL STEWART CONNECTOR AND SHALL NOT BE REPRODUCED, COPIED, OR USED IN ANY MANNER WITHOUT PRIOR WRITTEN CONSENT OF BEL STEWART CONNECTOR. THE SUBJECT MATTER MAY BE PATENTED OR A PATENT MAY BE PENDING. | |
| UNLESS OTHERWISE SPECIFIED TOLERANCES ARE $\pm .005$ [0.13] ANGLES ARE $\pm 1^\circ$ | | | | DRN BY: KRL DATE 1/25/06 APPD BY: TRM DATE 4-11-06 DWG NO. CT620010 REV. A5 | |
| SHEET NO. 1 OF 1 | | | | | |