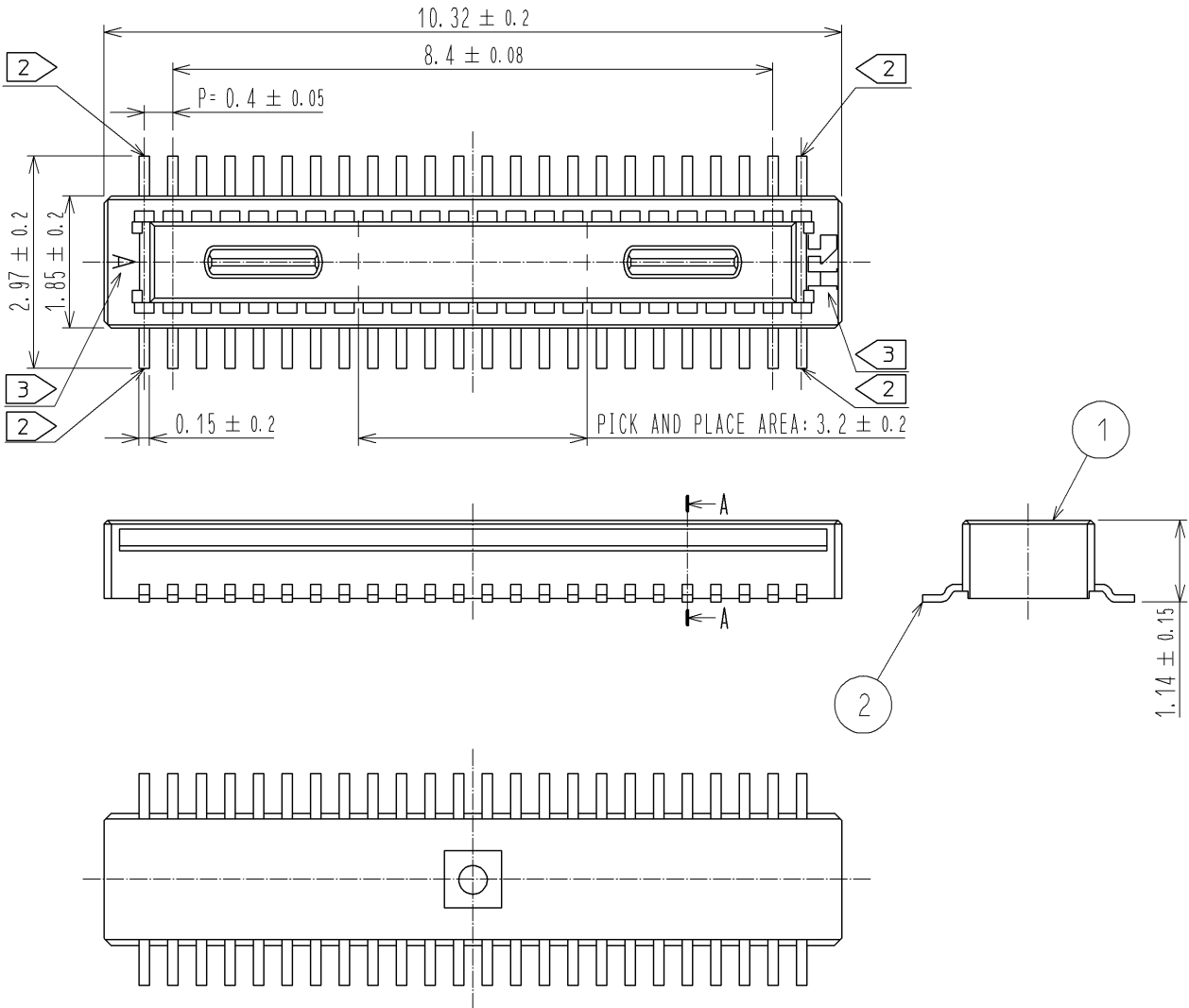
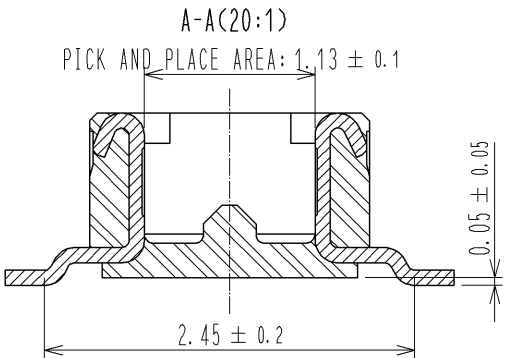
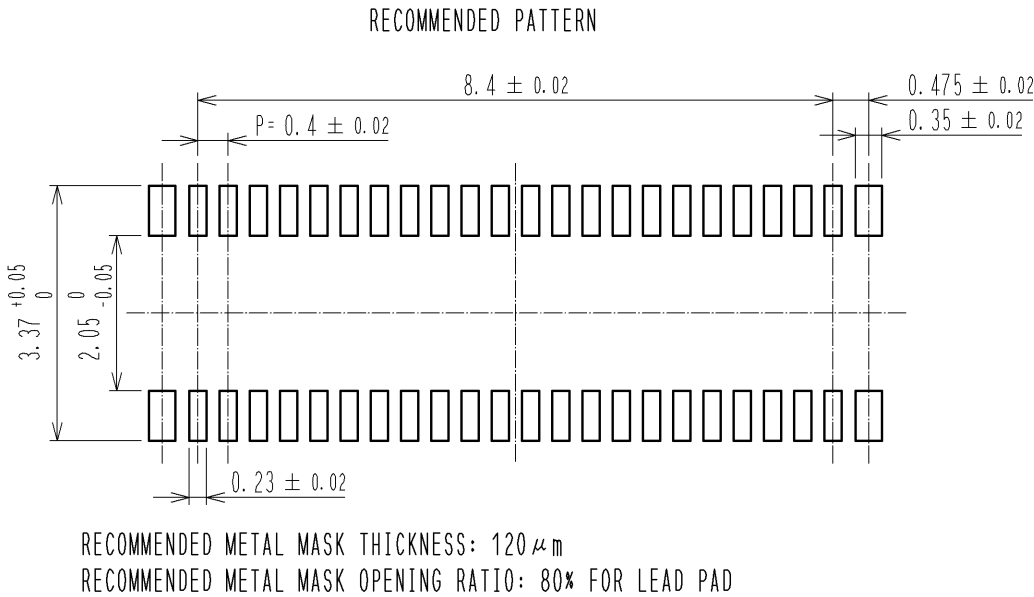


<b>APPLICABLE STANDARD</b>					
RATING	OPERATING TEMPERATURE RANGE	-35°C TO 85°C (NOTE 1)	STORAGE TEMPERATURE RANGE	-10°C TO 60°C	
	VOLTAGE	30V AC	APPLICABLE CONNECTOR	DF40*-44DS-0.4V (*)	
	CURRENT	0.3A			
<b>SPECIFICATIONS</b>					
ITEM		TEST METHOD	REQUIREMENTS	QT	AT
<b>CONSTRUCTION</b>					
GENERAL EXAMINATION		VISUALLY AND BY MEASURING INSTRUMENT.	ACCORDING TO DRAWING.	X	X
MARKING		CONFIRMED VISUALLY.		X	X
<b>ELECTRIC CHARACTERISTICS</b>					
CONTACT RESISTANCE		20mV AC OR LESS 1kHz, 1mA .	90mΩ MAX.	X	—
INSULATION RESISTANCE		100V DC.	50MΩ MIN.	X	—
VOLTAGE PROOF		100V AC FOR 1 min.	NO FLASHOVER OR BREAKDOWN.	X	—
<b>MECHANICAL CHARACTERISTICS</b>					
MECHANICAL OPERATION		30TIMES INSERTIONS AND EXTRACTIONS.	① CONTACT RESISTANCE: 90mΩ MAX. ② NO DAMAGE, CRACK OR LOOSENESS OF PARTS.	X	—
VIBRATION		FREQUENCY 10 TO 55 TO 10 Hz, APPROX 5min, SINGLE AMPLITUDE 0.75 mm, 10CYCLES, FOR 3 DIRECTIONS.	① NO ELECTRICAL DISCONTINUITY OF 1 μs. ② NO DAMAGE, CRACK OR LOOSENESS OF PARTS.	X	—
SHOCK		490 m/s <sup>2</sup> DURATION OF PULSE 11 ms AT 3 TIMES FOR 3 DIRECTIONS.	① NO ELECTRICAL DISCONTINUITY OF 1 μs. ② NO DAMAGE, CRACK OR LOOSENESS OF PARTS.	X	—
<b>ENVIRONMENTAL CHARACTERISTICS</b>					
RAPID CHANGE OF TEMPERATURE		TEMPERATURE -55→ 5 TO 35→85→ 5 TO 35 °C TIME 30→ 5 MAX → 30→ 5 MAX min UNDER 5 CYCLES.	① CONTACT RESISTANCE: 90mΩ MAX. ② INSULATION RESISTANCE: 50MΩ MIN. ③ NO DAMAGE, CRACK OR LOOSENESS OF PARTS.	X	—
DAMP HEAT (STEADY STATE)		EXPOSED AT 40 ± 2 °C, 90 TO 95 %, 96 h.	① CONTACT RESISTANCE: 90mΩ MAX. ② INSULATION RESISTANCE: 25MΩ MIN. ③ NO DAMAGE, CRACK OR LOOSENESS OF PARTS.	X	—
SULPHUR DIOXIDE		EXPOSED IN 25 PPM FOR 96h, 25°C, 75%.	① CONTACT RESISTANCE: 180mΩ MAX. ② NO DAMAGE, CRACK OR LOOSENESS OF PARTS.	X	—
HEAT RESISTANCE OF SOLDERING		<b>RECOMMENDED TEMPERATURE PROFILE</b> <b>SOLDERING AREA</b> MAX 250°C, 220°C FOR 60 SECONDS MAX. <b>PREHEATING AREA</b> 150 TO 180°C 90 TO 120SECONDS. MAXIMUM TWICE ACTION IS ALLOWED UNDER THE SAME CONDITION. <b>RECOMMENDED MANUAL SOLDERING CONDITION</b> SOLDERING IRON TEMPERATURE 350°C. SOLDERING TIME: WITHIN 3 SECONDS.	NO DEFORMATION OF CASE OF EXCESSIVE LOOSENESS OF THE TERMINALS.	X	—
SOLDERABILITY		SOLDERING TEMPERATURE: 245±5°C DURATION OF IMMERSION: SOLDERING FOR 3 SECONDS.	A NEW UNIFORM COATING OF SOLDER SHALL COVER MINIMUM OF 95% OF THE SURFACE BEING IMMERSED.	X	—
	COUNT	DESCRIPTION OF REVISIONS	DESIGNED	CHECKED	DATE
△					
REMARKS			APPROVED	KH. IKEDA	08.11.05
NOTE1: INCLUDE THE TEMPERATURE RISING BY CURRENT			CHECKED	TS. MIYAZAKI	08.11.05
Unless otherwise specified, refer to JIS C 5402, IEC 60512.			DESIGNED	TK. SUZUKI	08.11.05
			DRAWN	TK. SUZUKI	08.11.05
Note QT:Qualification Test AT:Assurance Test X:Applicable Test			DRAWING NO.		ELC4-315930-01
<b>HRS</b>	SPECIFICATION SHEET		PART NO.	DF40C-44DP-0.4V (51)	
	HIROSE ELECTRIC CO., LTD.		CODE NO.	CL684-4077-0-51	△ 1/1

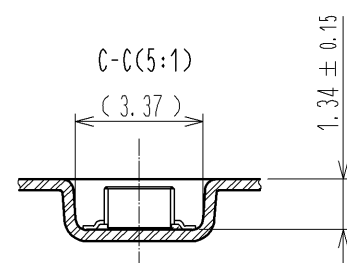
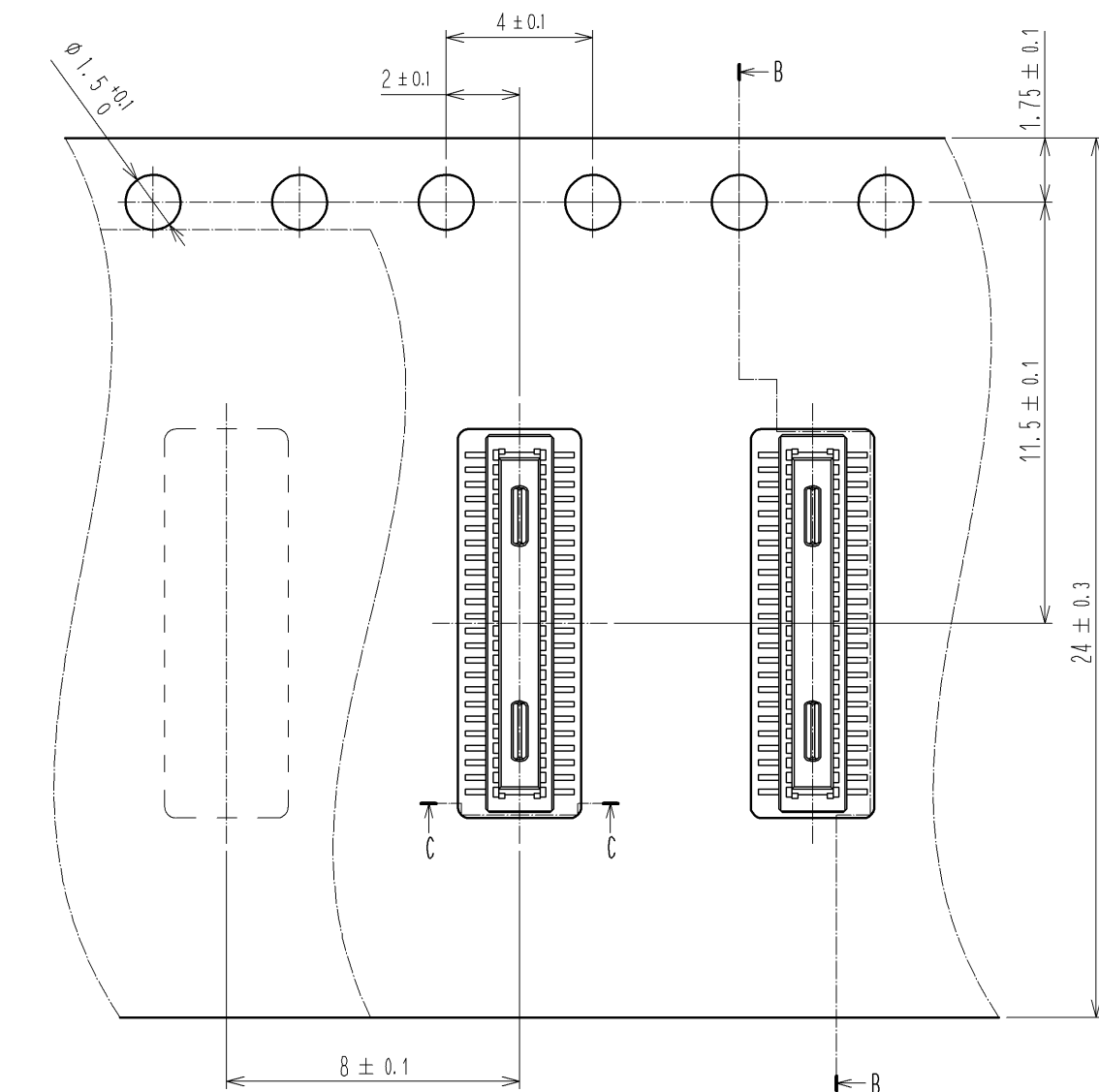


- NOTES)
- 1. ALL LEADS CO-PLANARITY SHALL BE 0.1mm MAX.
  - 2> EACH ONE CONTACT AT 4 CORNERS SHALL BE REINFORCED METAL FITTINGS.
  - 3> HRS MARK AND CAV NO. IS INDICATED IN APPROXI POSITION SHOWN.

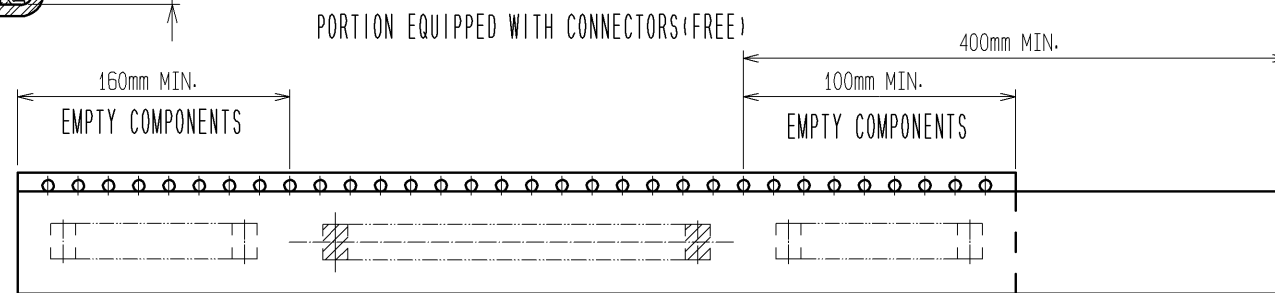


2	PHOSPHOR BRONZE	CONTACT AREA:GOLD 0.05μm MIN		5	PS	BLACK		
		SMT LEAD:GOLD 0.05μm MIN						
		UNDERPLATING:NICKEL 1μm MIN						
1	LCP	BLACK,UL94V-0		3	PS	CLEAR,EMBOSSED CARRIER TAPE		
NO.	MATERIAL	FINISH , REMARKS		NO.	MATERIAL	FINISH , REMARKS		
UNITS mm		SCALE 10 : 1	COUNT	DESCRIPTION OF REVISIONS		DESIGNED	CHECKED	DATE
HIROSE ELECTRIC CO., LTD.	APPROVED :KH. IKEDA		08. 11. 05	DRAWING NO.		EDC3-315930-01		
	CHECED :TS. MIYAZAKI		08. 11. 05	PART NO.		DF40C-44DP-0. 4V ( 51 )		
	DESIGNED :TK. SUZUKI		08. 11. 04	CODE NO.		CL684-4077-0-51		
	DRAWN :TK. SUZUKI		08. 11. 04					

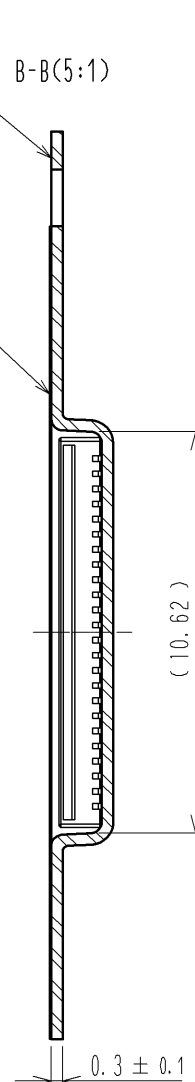
# EMBOSED CARRIER TAPE PACKAGING(5:1)



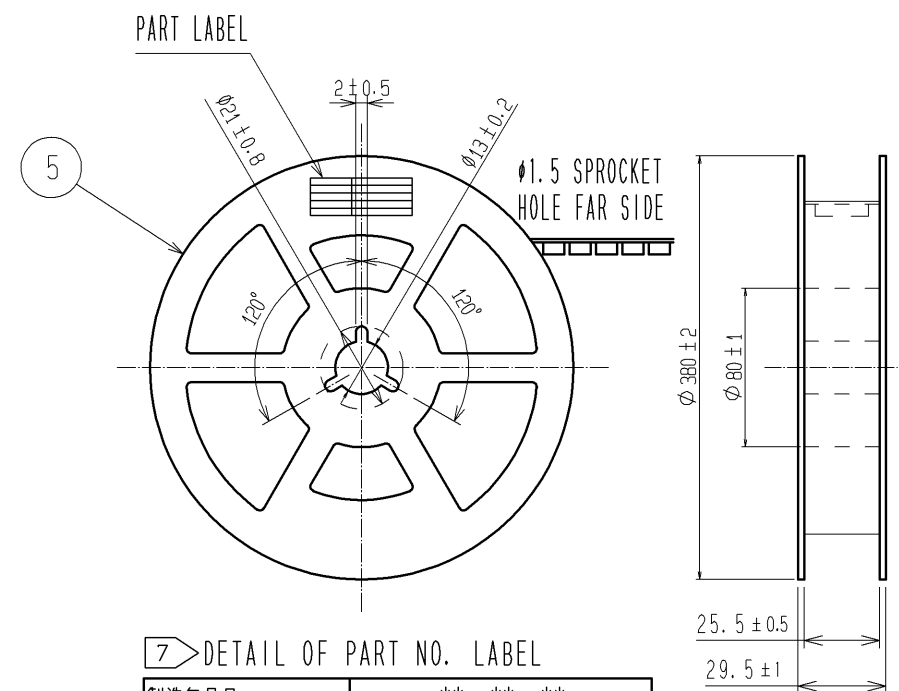
DIRECTION OF UNREELING →



6 TAPING



## STYLE AND DIMENSIONS OF REEL (FREE)



### 7 DETAIL OF PART NO. LABEL

製造年月日	** ** *
製品コード	CL684-4077-0-51
製品名	DF40C-44DP-0.4V(51)
数量	5000
納入者	ヒロセ電機(株)

- NOTES
- PER REEL 5000 CONNECTORS.
  - THE DIMENSIONS IN PARENTHESES ARE FOR REFERENCE.
  - REFER TO JIS C 0806 (PACKING OF COMPONENTS FOR AUTOMATIC HANDLING)
  - DETAIL OF PART NO. LABEL IS WRITTEN IN JAPANESE
  - PART NO. LABEL DESCRIBES THE FOLLOWING INFORMATION FROM TOP.
  - PRODUCTION DATE:
  - PRODUCT CODE: CL684-4077-0-51
  - PART NUMBER: DF40C-44P-0.4V(51)
  - NUMBER OF PIECES: 5000 PIECES
  - SUPPLIER NAME: HIROSE ELECTRIC CO., LTD..

HRS

DRAWING NO.	EDC3-315930-01
PART NO.	DF40C-44DP-0.4V(51)
CODE NO.	CL684-4077-0-51

2/2