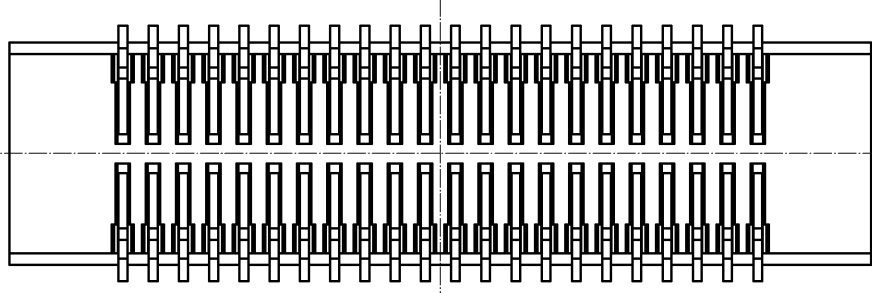
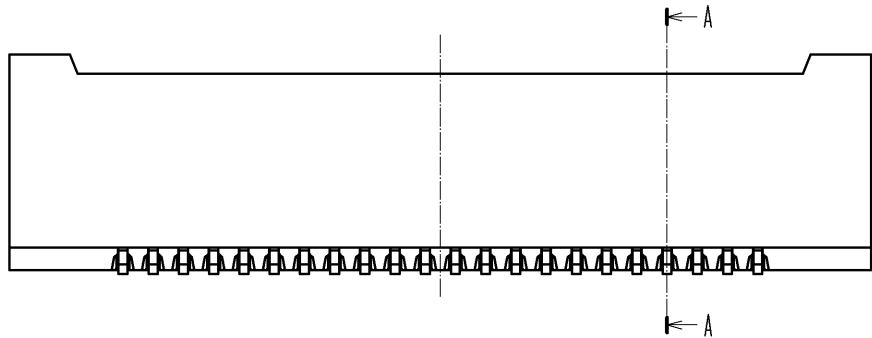
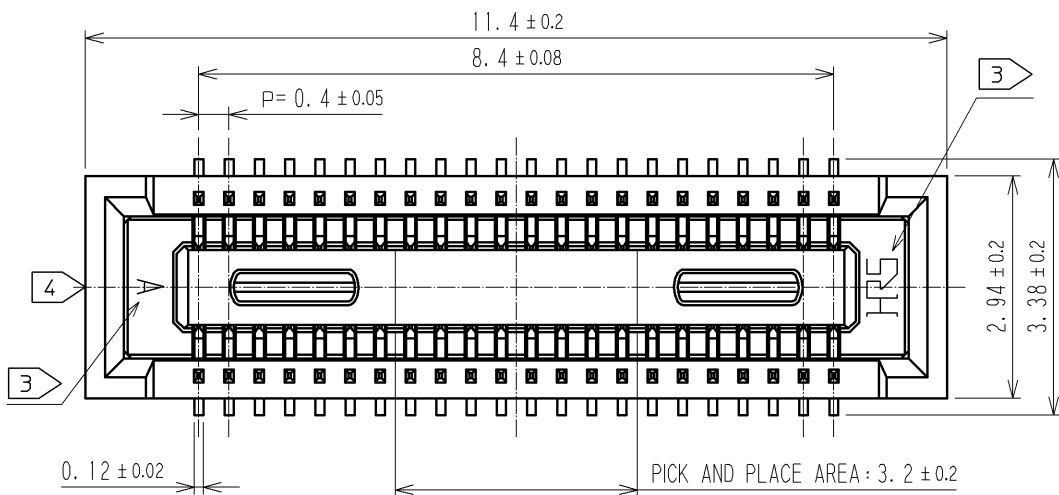
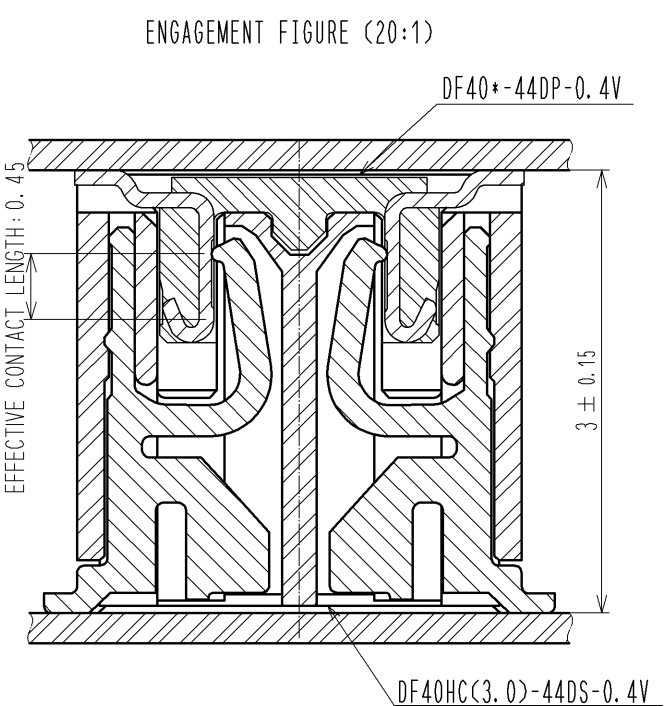
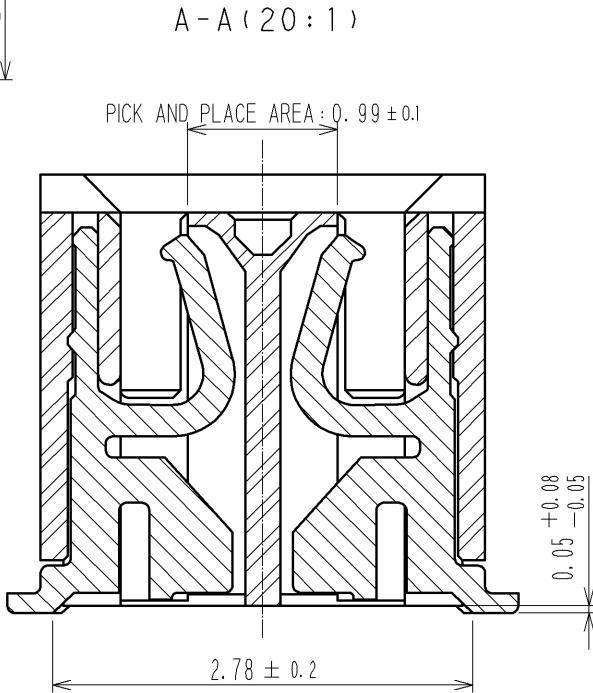
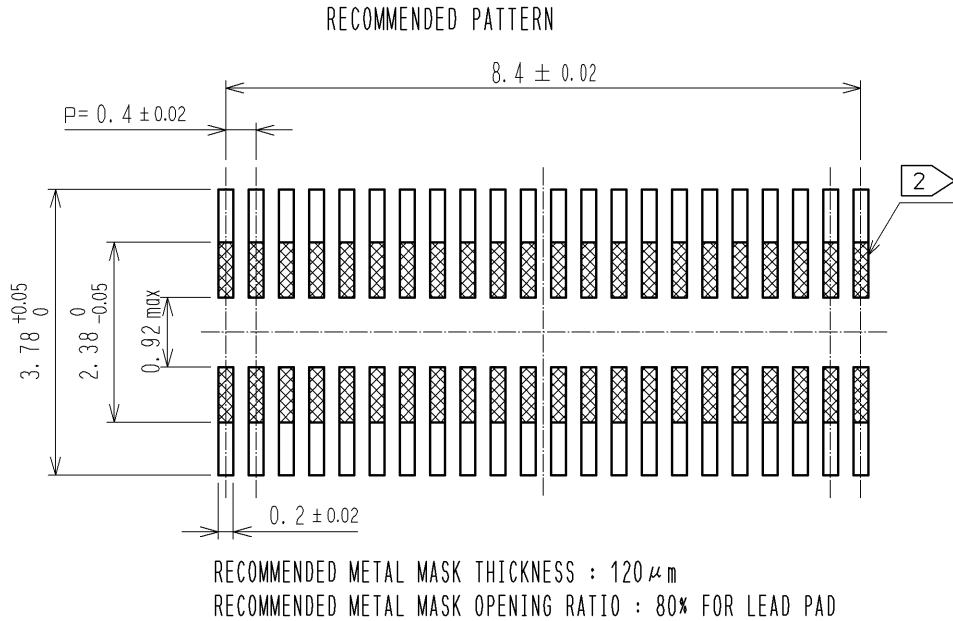
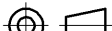


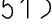


APPLICABLE STANDARD					
RATING	OPERATING TEMPERATURE RANGE	-35°C TO 85°C (NOTE 1)	STORAGE TEMPERATURE RANGE	-10°C TO 60°C	
	VOLTAGE	30V AC	APPLICABLE CONNECTOR	DF40*-44DP-0.4V (*)	
	CURRENT	0.3A			
SPECIFICATIONS					
ITEM		TEST METHOD	REQUIREMENTS	QT	AT
CONSTRUCTION					
GENERAL EXAMINATION		VISUALLY AND BY MEASURING INSTRUMENT.	ACCORDING TO DRAWING.	X	X
MARKING		CONFIRMED VISUALLY.		X	X
ELECTRIC CHARACTERISTICS					
CONTACT RESISTANCE		20mV AC OR LESS 1kHz, 1mA .	90mΩ MAX.	X	—
INSULATION RESISTANCE		100V DC.	50MΩ MIN.	X	—
VOLTAGE PROOF		100V AC FOR 1 min.	NO FLASHOVER OR BREAKDOWN.	X	—
MECHANICAL CHARACTERISTICS					
MECHANICAL OPERATION		30TIMES INSERTIONS AND EXTRACTIONS.	① CONTACT RESISTANCE: 90mΩ MAX. ② NO DAMAGE, CRACK OR LOOSENESS OF PARTS.	X	—
VIBRATION		FREQUENCY 10 TO 55 TO 10 Hz, APPROX 5min, SINGLE AMPLITUDE 0.75 mm, 10CYCLES, FOR 3 DIRECTIONS.	① NO ELECTRICAL DISCONTINUITY OF 1 μs. ② NO DAMAGE, CRACK OR LOOSENESS OF PARTS.	X	—
SHOCK		490 m/s ² DURATION OF PULSE 11 ms AT 3 TIMES FOR 3 DIRECTIONS.	① NO ELECTRICAL DISCONTINUITY OF 1 μs. ② NO DAMAGE, CRACK OR LOOSENESS OF PARTS.	X	—
ENVIRONMENTAL CHARACTERISTICS					
RAPID CHANGE OF TEMPERATURE		TEMPERATURE -55→ 5 TO 35→85→ 5 TO 35 °C TIME 30→ 5 MAX → 30→ 5 MAX min UNDER 5 CYCLES.	① CONTACT RESISTANCE: 90mΩ MAX. ② INSULATION RESISTANCE: 50MΩ MIN. ③ NO DAMAGE, CRACK OR LOOSENESS OF PARTS.	X	—
DAMP HEAT (STEADY STATE)		EXPOSED AT 40 ± 2 °C, 90 TO 95 %, 96 h.	① CONTACT RESISTANCE: 90mΩ MAX. ② INSULATION RESISTANCE: 25MΩ MIN. ③ NO DAMAGE, CRACK OR LOOSENESS OF PARTS.	X	—
SULPHUR DIOXIDE		EXPOSED IN 25 PPM FOR 96h, 25°C, 75%.	① CONTACT RESISTANCE: 180mΩ MAX. ② NO DAMAGE, CRACK OR LOOSENESS OF PARTS.	X	—
HEAT RESISTANCE OF SOLDERING		RECOMMENDED TEMPERATURE PROFILE SOLDERING AREA MAX 250°C, 220°C FOR 60 SECONDS MAX. PREHEATING AREA 150 TO 180°C 90 TO 120SECONDS. MAXIMUM TWICE ACTION IS ALLOWED UNDER THE SAME CONDITION. RECOMMENDED MANUAL SOLDERING CONDITION SOLDERING IRON TEMPERATURE 350°C. SOLDERING TIME: WITHIN 3 SECONDS.	NO DEFORMATION OF CASE OF EXCESSIVE LOOSENESS OF THE TERMINALS.	X	—
SOLDERABILITY		SOLDERING TEMPERATURE: 245±5°C DURATION OF IMMERSION: SOLDERING FOR 3 SECONDS.	A NEW UNIFORM COATING OF SOLDER SHALL COVER MINIMUM OF 95% OF THE SURFACE BEING IMMERSED.	X	—
	COUNT	DESCRIPTION OF REVISIONS	DESIGNED	CHECKED	DATE
△					
REMARKS			APPROVED	KH. IKEDA	08. 11. 10
NOTE1: INCLUDE THE TEMPERATURE RISING BY CURRENT			CHECKED	TS. MIYAZAKI	08. 11. 10
Unless otherwise specified, refer to JIS C 5402, IEC 60512.			DESIGNED	TK. SUZUKI	08. 11. 08
			DRAWN	TK. SUZUKI	08. 11. 08
Note QT:Qualification Test AT:Assurance Test X:Applicable Test			DRAWING NO.		ELC4-315880-01
HRS	SPECIFICATION SHEET		PART NO.	DF40HC (3. 0) -44DS-0.4V (51)	
	HIROSE ELECTRIC CO., LTD.		CODE NO.	CL684-4076-7-51	△ 1/1

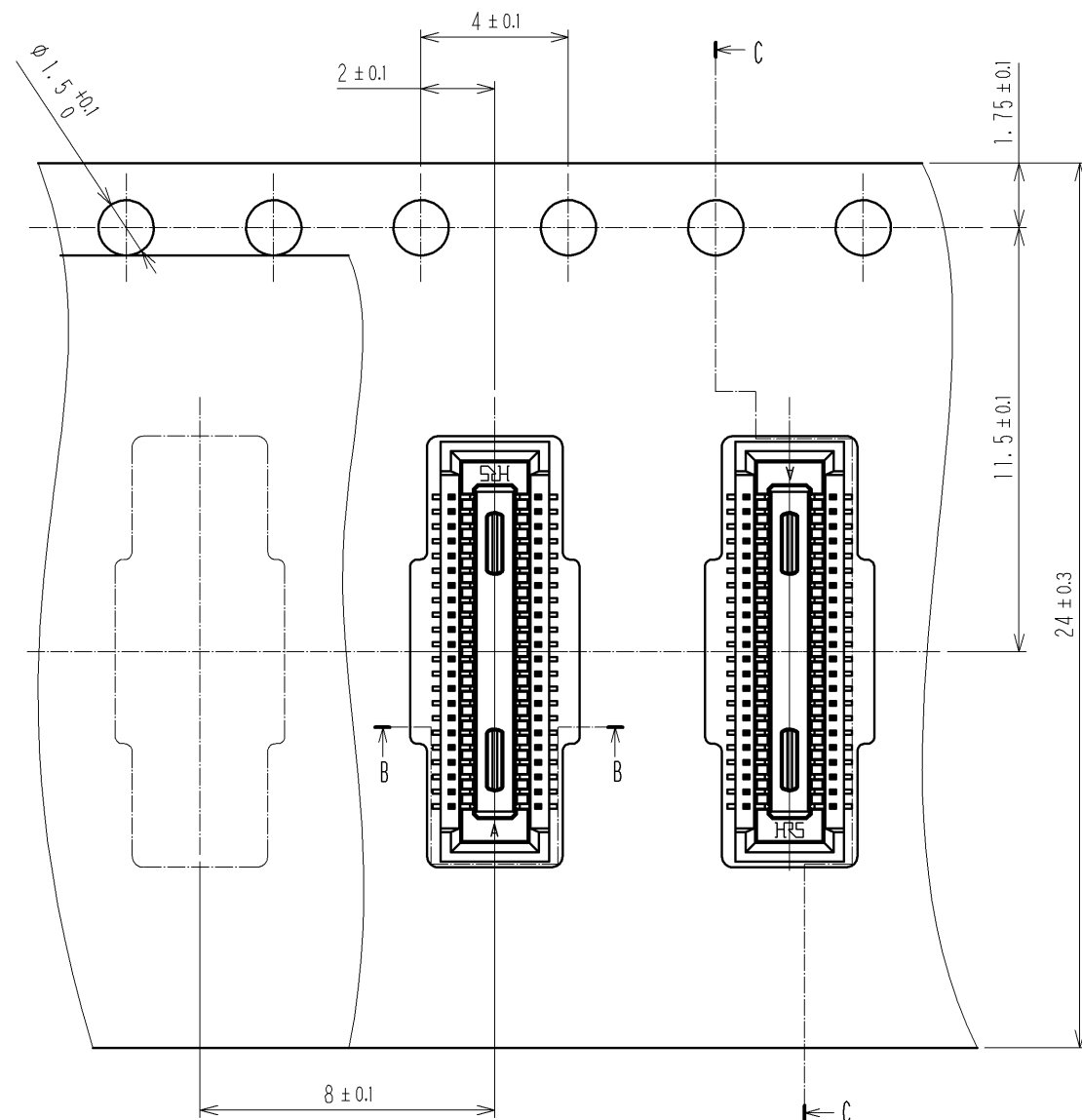


NOTE 1. ALL LEADS CO-PLANARITY SHALL BE 0.1 MAX.
2 IS NO PATTERN AREA OTHER THAN THE SAME CIRCUIT.
3 HRS MARK AND CAV NO. IS INDICATED IN APPROXI POSITION SHOWN.
4 GATE POSITION IS POSITIONED IN APPROXIMAL AREA SHOWN.

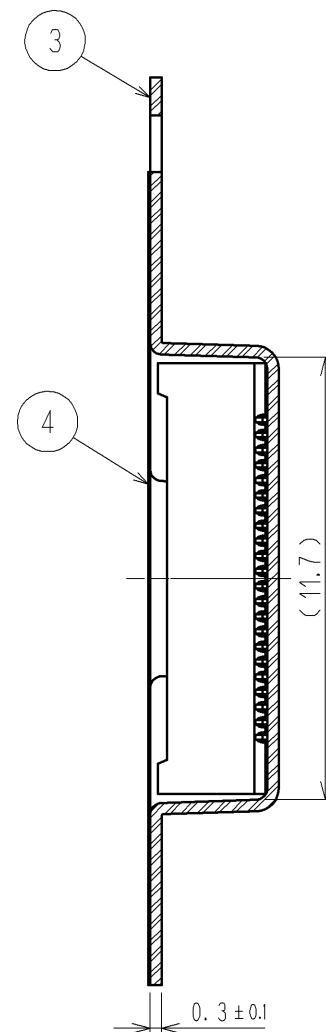


2	PHOSPHOR BRONZE	CONTACT AREA:GOLD 0.05μm MIN		5	PS	BLACK			
		SMT LEAD:GOLD 0.05μm MIN							
		UNDERPLATING:NICKEL 1μm MIN							
1	LCP	BLACK, UL94V-0		3	PS	CLEAR, EMBOSSED CARRIER TAPE			
NO.	MATERIAL	FINISH , REMARKS		NO.	MATERIAL	FINISH , REMARKS			
UNITS mm			SCALE 10 : 1		COUNT	DESCRIPTION OF REVISIONS	DESIGNED	CHECKED	DATE
 HIROSE ELECTRIC CO., LTD.			APPROVED :KH. IKEDA		08.11.10	DRAWING NO. EDC3-315880-01			
			CHECKED :TS. MIYAZAKI		08.11.10	PART NO. DF40HC(3.0)-44DS-0.4V(51)			
			DESIGNED :TK. SUZUKI		08.11.08	CODE NO. CL684-4076-7-51			
			DRAWN :TK. SUZUKI		08.11.08	 1			

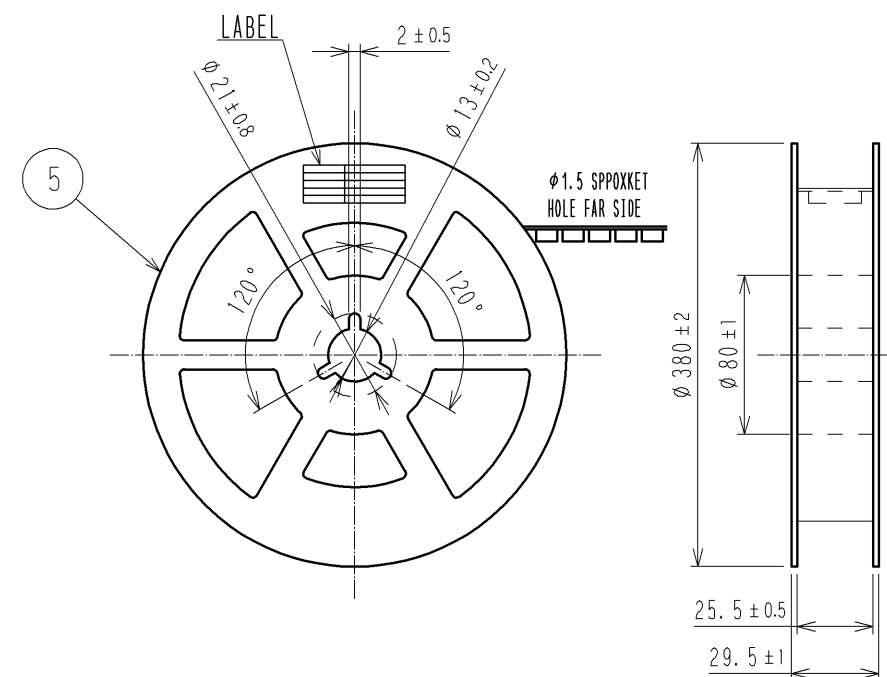
SCALE (5:1)



C-C(5:1)



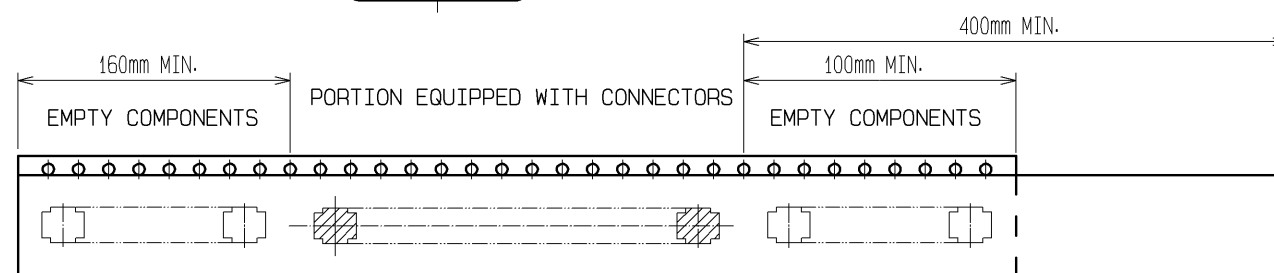
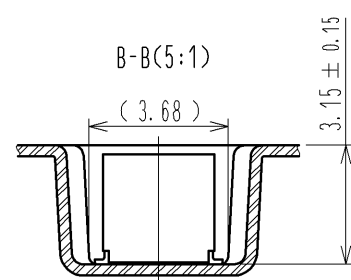
STYLE AND DIMENSION OF REEL (FREE SIZE)



8 > DETAIL OF PART NO. LABEL

製造年月日	** ** *
製品コード	CL684-4076-7-51
製品名	DF40HC(3.0)-44DS-0.4V(51)
数量	3000
納入者	ヒロセ電機(株)

DIRECTION OF UNREELING →



TRAILER

7 > TAPING

LEADER

- NOTES)
- PER REEL 3000 CONNECTORS.
 - THE DIMENSIONS IN PARENTHESES ARE FOR REFERENCE.
 - REFER TO JIS C 0806(PACKING OF COMPONENTS FOR AUTOMATIC HANDLING)
 - DETAIL OF PART NO. LABEL IS WRITTEN IN JAPANESE.
- PRODUCTION DATE:
 PRODUCT CODE: CL684-4076-7-51
 PART NUMBER: DF40HC(3.0)-44DS-0.4V(51)
 NUMBER OF PIECES: 3000 PIECES
 SUPPLIER NAME: HIROSE ELECTRIC CO., LTD.

HRS

DRAWING NO.	EDC3-315880-01
PART NO.	DF40HC(3.0)-44DS-0.4V(51)
CODE NO.	CL684-4076-7-51

△ 2/2