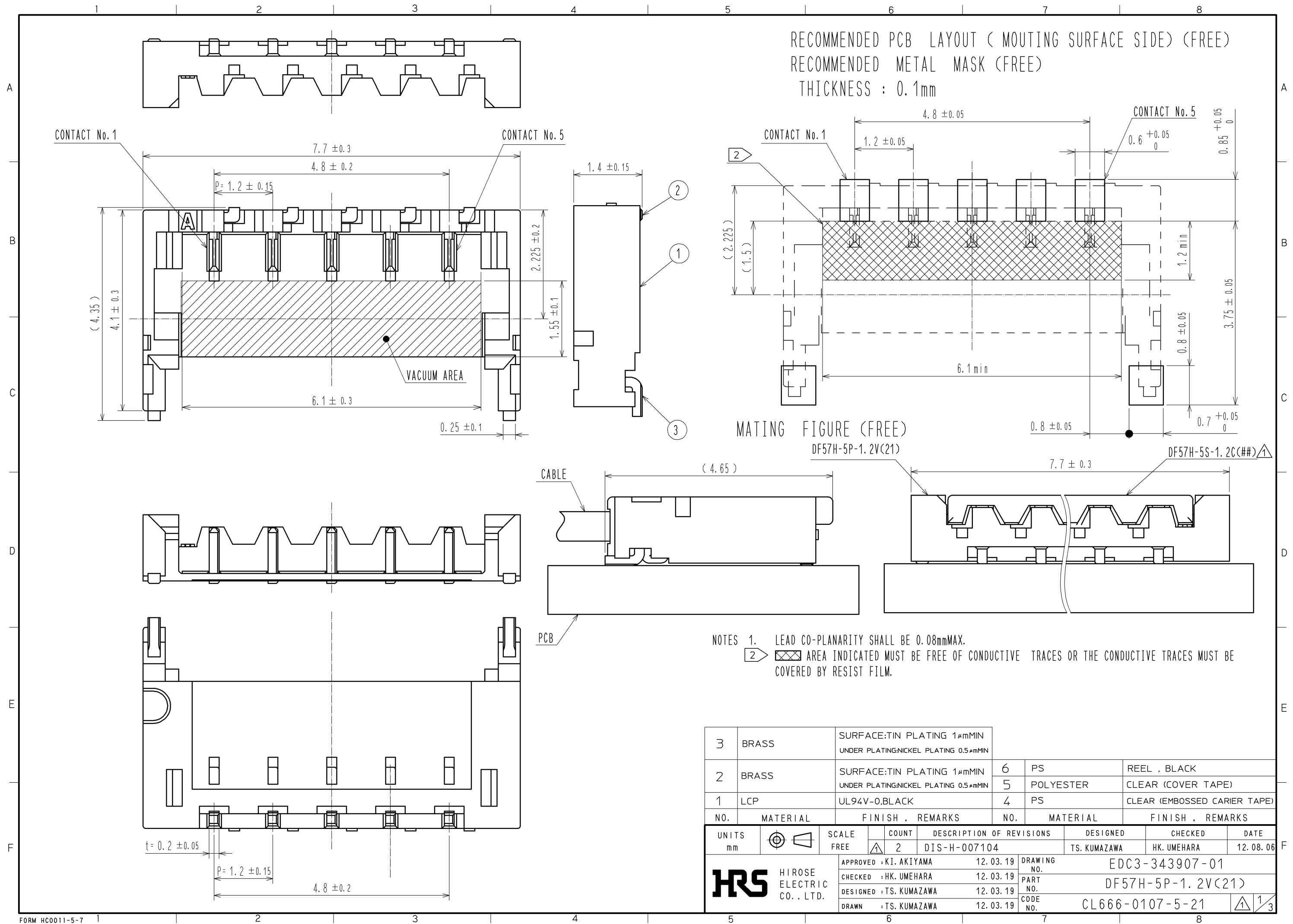
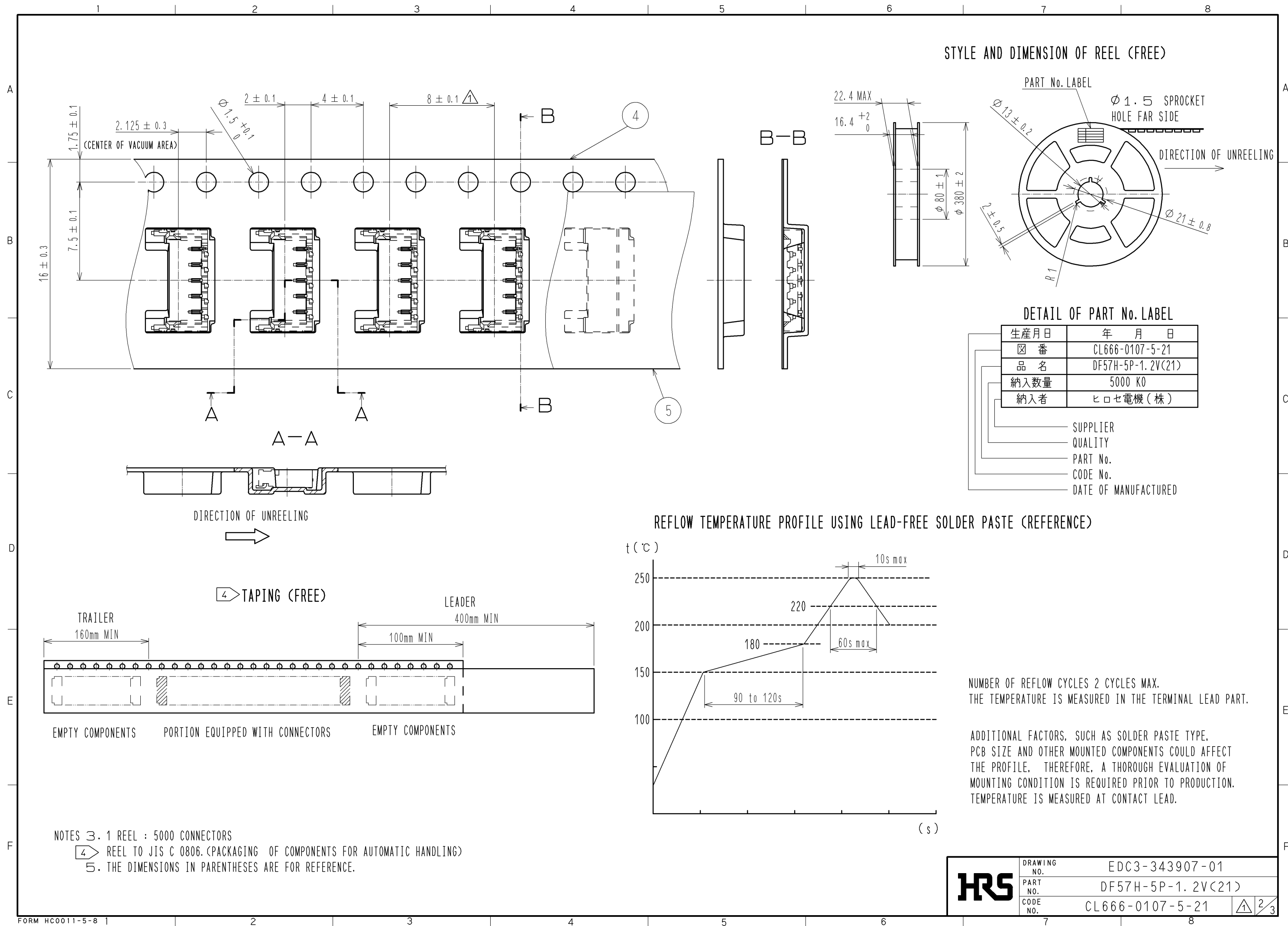


APPLICABLE STANDARD					
RATING	OPERATING TEMPERATURE RANGE	-35 °C TO +85°C (NOTE1)	STORAGE TEMPERATURE RANGE	-10 °C TO +60°C (NOTE3)	
	OPERATING HUMIDITY RANGE	20% TO 80% (NOTE2)	STORAGE HUMIDITY RANGE	40% TO 70% (NOTE3)	
	APPLICABLE CONNECTOR	DF57H-5S-1.2C(##)	CURRENT	AWG 28 : 1.5A AWG 30 : 1.0A	
	VOLTAGE	50 V AC/DC		AWG 32 : 0.8A AWG 34 : 0.5A	
SPECIFICATIONS					
ITEM		TEST METHOD	REQUIREMENTS	QT	AT
CONSTRUCTION					
GENERAL EXAMINATION		VISUALLY AND BY MEASURING INSTRUMENT.	ACCORDING TO DRAWING.	X	X
MARKING		CONFIRMED VISUALLY.		X	X
ELECTRIC CHARACTERISTICS					
CONTACT RESISTANCE MILLIVOLT LEVEL METHOD		20mV MAX, 1mA (DC or 1000Hz).	10 mΩ MAX.	X	—
INSULATION RESISTANCE		100 V DC.	100 MΩ MIN.	X	—
VOLTAGE PROOF		500 V AC FOR 1 min.	NO FLASHOVER OR BREAKDOWN.	X	—
MECHANICAL CHARACTERISTICS					
MECHANICAL OPERATION		30 TIMES INSERTION AND EXTRACTION.	①CONTACT RESISTANCE: 20 mΩ MAX. ②NO DAMAGE, CRACK OR LOOSENESS OF PARTS.	X	—
CONTACT INSERTION AND EXTRACTION FORCES		IT TAKES OUT AND INSERTS WITH A CONFORMITY CONNECTOR.	①INSERTION FORCE : 27.0N MAX. ②EXTRACTION FORCE: 1.2N MIN.	X	—
VIBRATION		FREQUENCY 10 TO 55 Hz, SINGLE AMPLITUDE 0.75 mm, AT 10 CYCLES FOR 3 DIRECTION.	①NO ELECTRICAL DISCONTINUITY OF 1 μs. ②NO DAMAGE, CRACK OR LOOSENESS OF PARTS.	X	—
SHOCK		490 m/s ² DURATION OF PULSE 11 ms AT 3 TIMES FOR 3 DIRECTIONS.		X	—
ENVIRONMENTAL CHARACTERISTICS					
DAMP HEAT (STEADY STATE)		EXPOSED AT 40 ± 2°C, 90 TO 95 %, 96 h. (AFTER LEAVING THE ROOM TEMPERATURE FOR 1~2h.)	①CONTACT RESISTANCE: 20 mΩ MAX. ②INSULATION RESISTANCE: 100 MΩ MIN. ③NO DAMAGE, CRACK OR LOOSENESS OF PARTS.	X	—
RAPID CHANGE OF TEMPERATURE		TEMPERATURE -55°C → +85°C TIME 30min → 30min UNDER 5 CYCLES. (THE TRANSFERRING TIME OF THE TANK IS 2~3 min) (AFTER LEAVING THE ROOM TEMPERATURE FOR 1~2h.)	①CONTACT RESISTANCE: 20 mΩ MAX. ②INSULATION RESISTANCE: 100 MΩ MIN. ③NO DAMAGE, CRACK OR LOOSENESS OF PARTS.	X	—
RESISTANCE TO SOLDERING HEAT		1) REFLOW SOLDERING «REFLOW TIME» NUMBER OF REFLOW CYCLES : 2 CYCLES MAX. DURATION ABOVE 220 °C, 60 sec. MAX. PEAK TEMPERATURE: 250°C 10 sec. MAX. «PRE-HEAT TIME» PRE-HEAT TEMPERATURE (MIN) : 150 °C PRE-HEAT TEMPERATURE (MAX) : 180 °C PRE-HEAT TIME (MIN) : 90 sec. PRE-HEAT TIME (MAX) : 120 sec. 2) MANUAL SOLDERING SOLDERING IRON TEMPERATURE : 350±10°C, SOLDERING TIME : 3sec. NO STRENGTH ON CONTACT.	NO DEFORMATION OF CASE OF EXCESSIVE LOOSENESS OF THE TERMINALS.	X	—
SOLDERABILITY		SOLDERING TEMPERATURE : 245°C DURATION OF IMMERSION : SOLDERING, FOR 5 sec.	NEW UNIFORM COATING OF SOLDER SHALL COVER MINIMUM OF 95 % OF THE SURFACE BEING IMMERSED.	X	—
NOTE 1: INCLUDE THE TEMPERATURE RISING BY CURRENT. NOTE2:NO CONDENSING NOTE3:APPLY TO THE CONDITION OF LONG TERM STORAGE FOR UNUSED PRODUCTS BEFOR PCB ON BOARD, AFTER PCB BOARD, OPERATING TEMPERATURE AND HUMIDITY RANGE IS APPLIED FOR INTERIM STRAGE DURING TRANSPORTATION.					
	COUNT	DESCRIPTION OF REVISIONS	DESIGNED	CHECKED	DATE
△	0				
REMARKS			APPROVED	KI. AKIYAMA	12. 03. 19
			CHECKED	HK. UMEHARA	12. 03. 19
Unless otherwise specified, refer to JIS C 5402.			DESIGNED	TS. KUMAZAWA	12. 03. 19
			DRAWN	TS. KUMAZAWA	12. 03. 19
Note QT:Qualification Test AT:Assurance Test X:Applicable Test			DRAWING NO.		ELC4-343907-01
HRS	SPECIFICATION SHEET		PART NO.	DF57H-5P-1. 2V (21)	
	HIROSE ELECTRIC CO., LTD.		CODE NO.	CL666-0107-5-21	△ 1/1



**HRS**

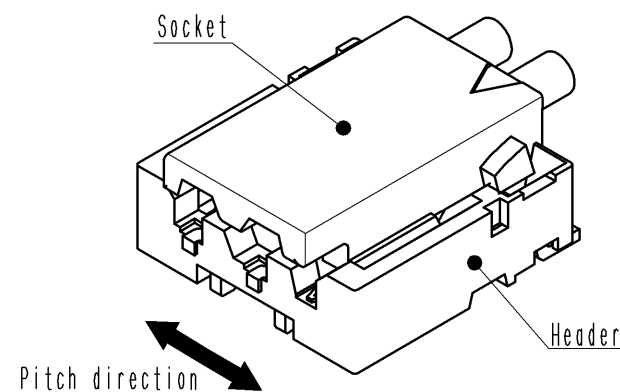
DRAWING NO.	EDC3-343907-01
PART NO.	DF57H-5P-1.2V(21)
CODE NO.	CL666-0107-5-21

1	2	3
---	---	---

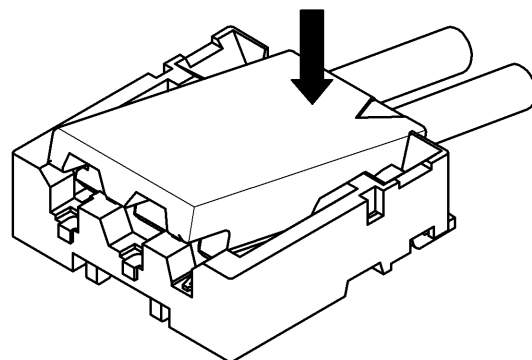
DF57 Series Mating / Unmating Operation Instruction

Mating

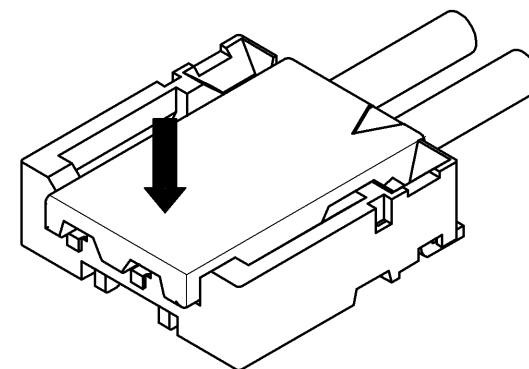
① By positioning the convexity of the socket sides to the header concavity, align the centers of the socket and the header in pitch direction.



② Slightly press the socket down at cable side to tilted angle.

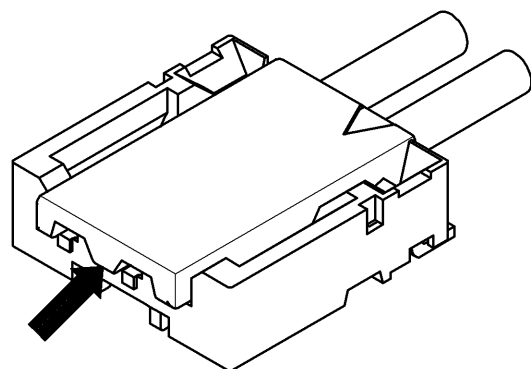


③ Press down at the lever side with stabilizing the cable side to insert. Mating completes.

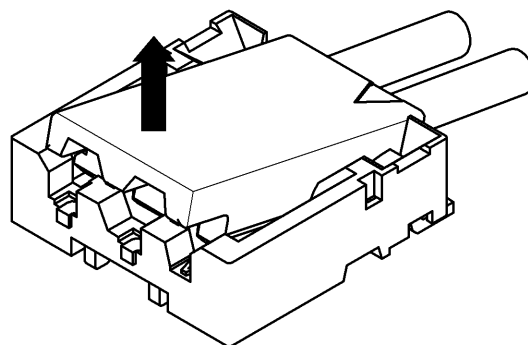


Unmating

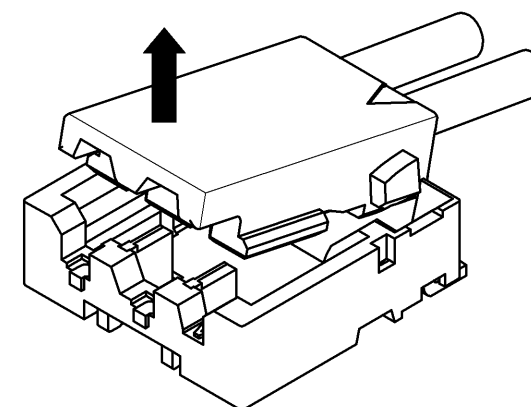
① Hook the lever with finger nail.



② Lift up to the upper direction and friction lock is released.



③ Lift up to the upper direction and positive lock is released. Removal completes.


HRS

DRAWING NO.	EDC3-343907-01
PART NO.	DF57H-5P-1.2V<21>
CODE NO.	CL666-0107-5-21

3	3
---	---