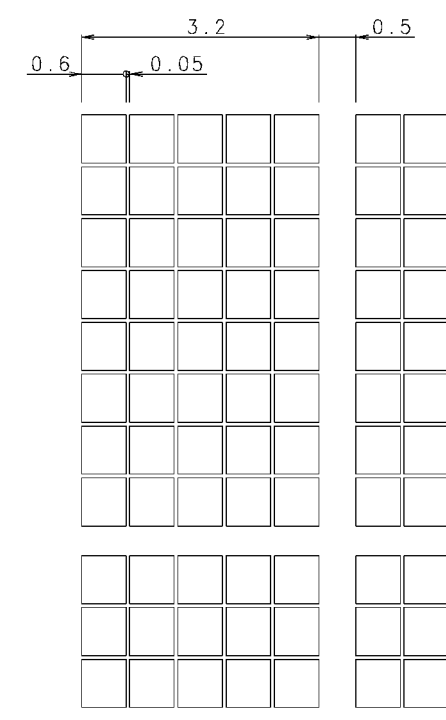
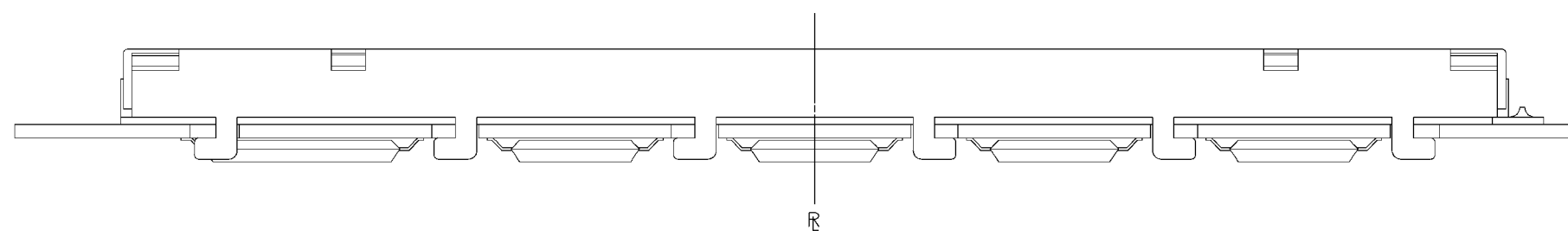
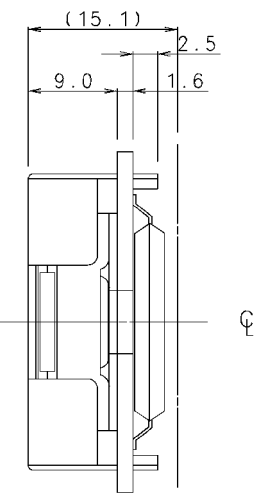
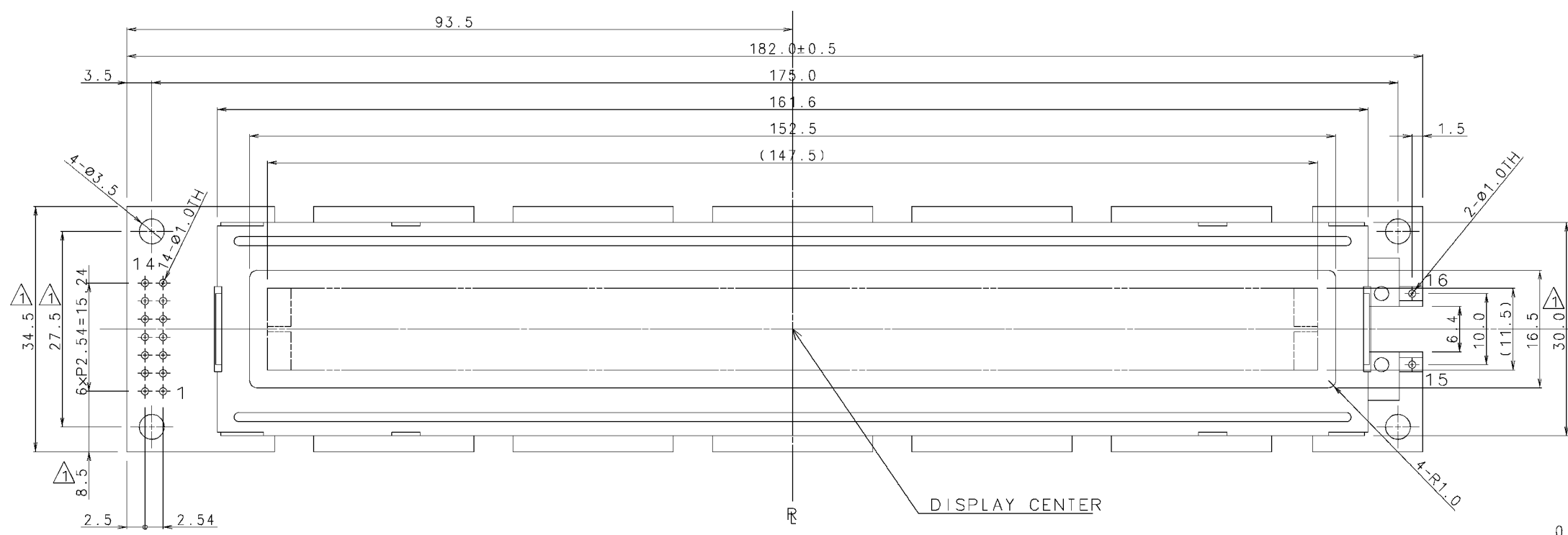
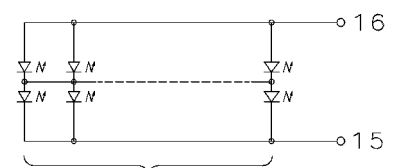




ISSUE	REVISIONS	DRAWN	APPROVED	DATE
1	ADDITION	S.Matsuoka		JAN. 10'86
2	ADDITION	S.Matsuoka		MAR. 20'86



DOT DETAIL: SCALE 15/1



2x38=76
2x36=72CHIPS
LED CIRCUIT

PIN ASSIGNMENT

PIN No.	SYMBOL	PIN No.	SYMBOL
1	V _{SS}	9	DB2
2	V _{CC}	10	DB3
3	V _{EE}	11	DB4
4	RS	12	DB5
5	R/W	13	DB6
6	E	14	DB7
7	DB0	15	LED CATHODE
8	DB1	16	LED ANODE

NOTE
1) TOLERANCES OF ALL DIMENSIONS ARE ±0.3mm OTHERWISE NOTIFIED.
(指定寸法公差ハ、±0.3トスル)

TOLERANCE			THIRD ANGLE PROJECTION	DATE DEC.23'85	OPTREX CORPORATION
MEASURE	A	B			
L ≤ 16	±0.1	±0.3	±1	UNIT mm	TITLE DIMENSIONAL OUTLINE
16 < L ≤ 63	±0.2	±0.5	±1.5	APPROVED M.Iida	CODE DMC 40267 Series
63 < L ≤ 250	±0.3	±0.8	±2	SCALE 2:1	
250 < L ≤ 500	±0.5	±1.2	±3	CHECKED T.Ohyama	DRAWN S.Matsuoka
500 < L	±0.8	±2	±4	DRAWN S.Matsuoka	
ANGLE	±1°	±5°	±10°		