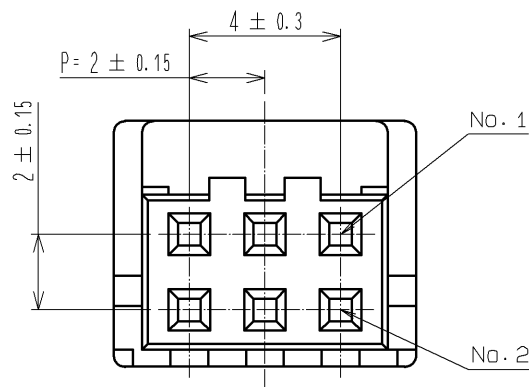
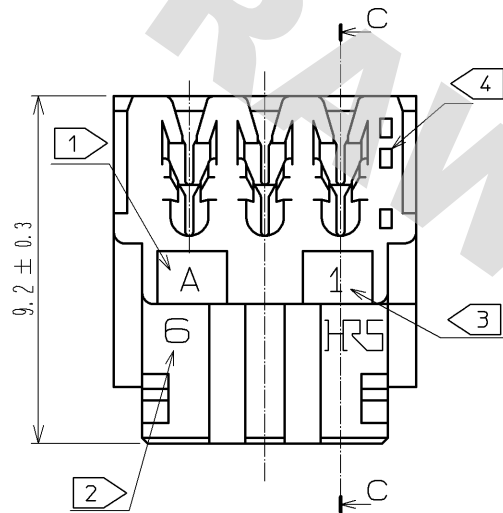
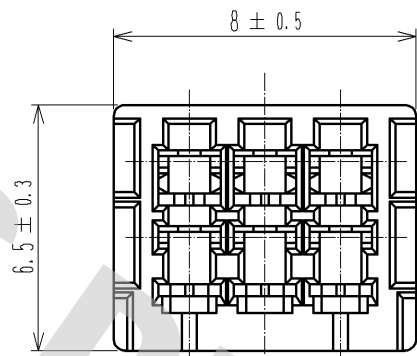
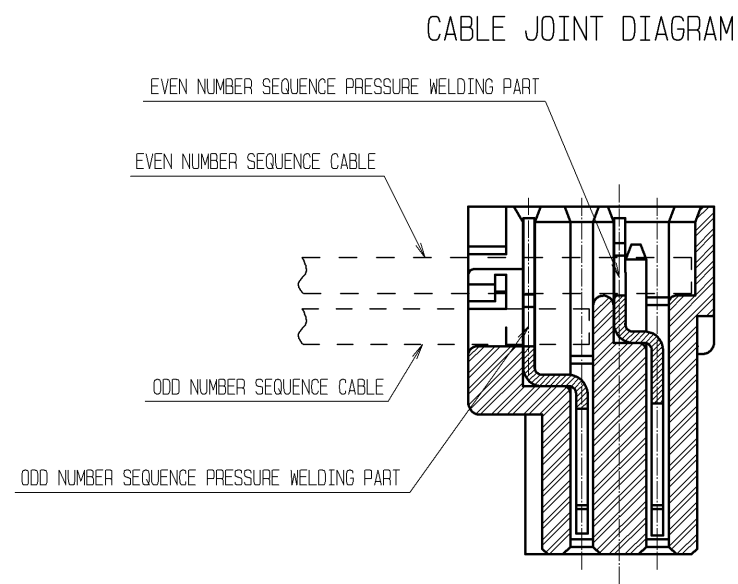
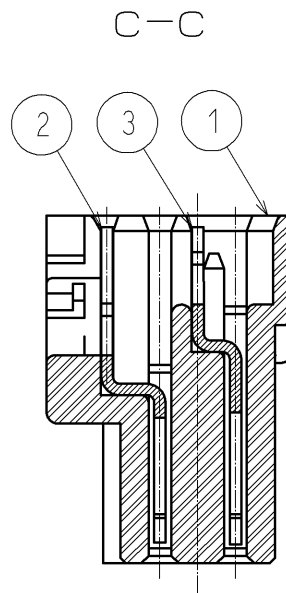
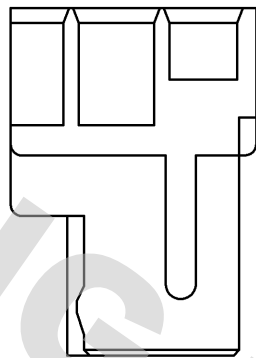


DRAWING FOR REFERENCE: This is subject to change without notice
08/11/2012



- NOTES
- 1 DIE CAVITY No.
 - 2 NUMBER OF CONTACT.
 - 3 AT CONTACT No. 1 SIDE.
 - 4 ONE SQUARE HOLE IN LOW ROW MEANS ODD NUMBER SIDE AND TWO SQUARER HOLES IN UPPER LOW EVEN NUMBER OF CONTACT No. RESPECTIVELY.

SUFFIX	WIRE	WIRE CONSTRUCTION	OUTER DIAMETER OF INSULATION
R26	UL1061 AWG26	7/0.16	0.95 TO 1.05



2	PHOSPHOR BRONZE	SURFACE:TIN PLATED 1μm min UNDER PLATING:NICKEL PLATED 0.5μm min	3	PHOSPHOR BRONZE	SURFACE:TIN PLATED 1μm min UNDER PLATING:NICKEL PLATED 0.5μm min
1	POLYAMIDE	UL94V-0, BLACK			
NO.	MATERIAL	FINISH , REMARKS	NO.	MATERIAL	FINISH , REMARKS
UNITS mm					
		SCALE 5 : 1	COUNT △	DESCRIPTION OF REVISIONS	
		DESIGNED		CHECKED	DATE
HRS HIROSE ELECTRIC CO., LTD.		APPROVED : TS. SAKATA	08.10.20	DRAWING NO.	EDC3-084861-01
		CHECKED : TS. KUMAZAWA	08.10.17	PART NO.	DF11-6DS-2R26(C05)
		DESIGNED : KT. ISHII	08.10.16	CODE NO.	CL543-0653-3-05
		DRAWN : KT. ISHII	08.10.16		△ 1/1