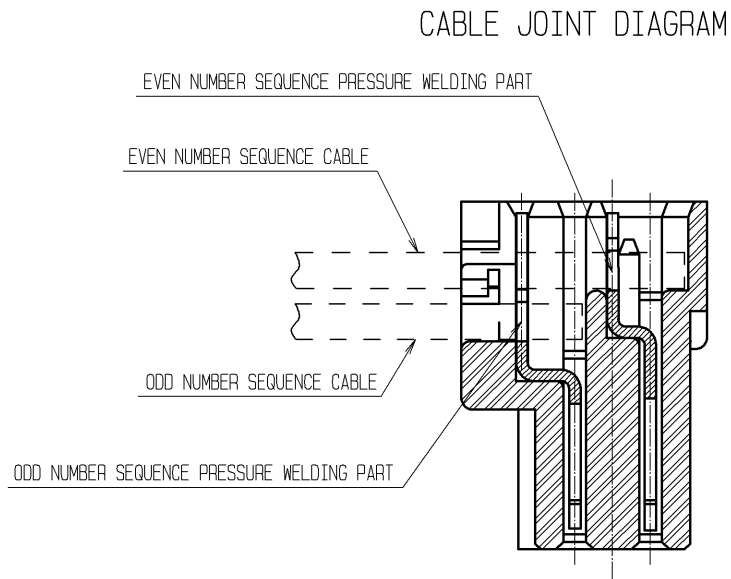
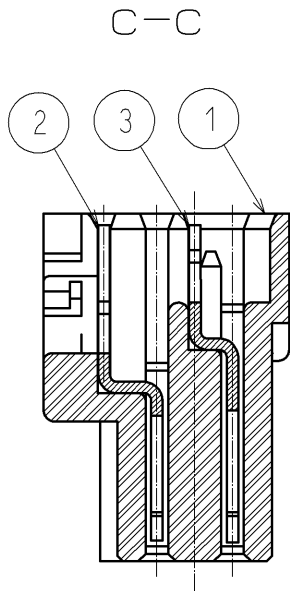
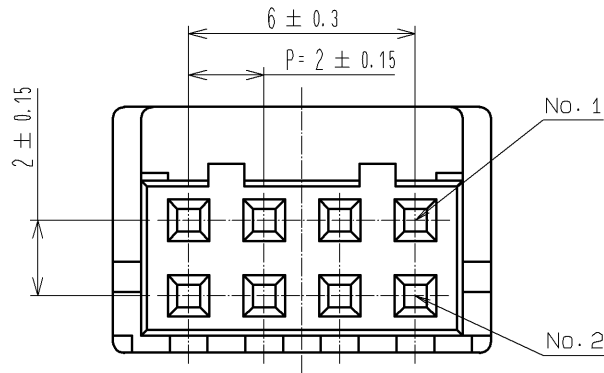
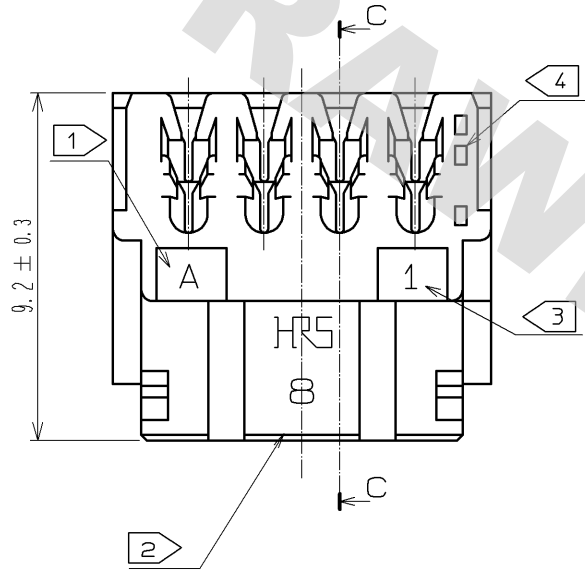
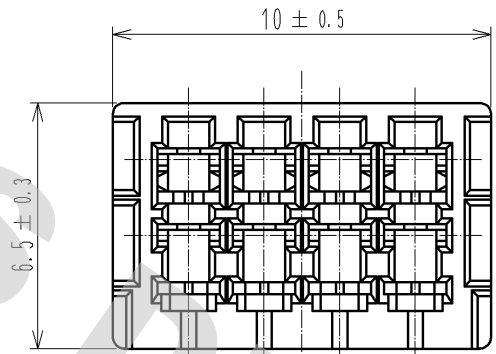


DRAWING FOR REFERENCE: This is subject to change without notice  
08/11/2012

- NOTES
- 1 DIE CAVITY No.
  - 2 NUMBER OF CONTACT.
  - 3 AT CONTACT No. 1 SIDE.
  - 4 ONE SQUARE HOLE IN LOW ROW MEANS ODD NUMBER SIDE AND TWO SQUARER HOLES IN UPPER LOW EVEN NUMBER OF CONTACT No. RESPECTIVELY.

SUFFIX	WIRE	WIRE CONSTRUCTION	OUTER DIAMETER OF INSULATION
R26	UL1061 AWG26	7/0.16	0.95 TO 1.05



2	PHOSPHOR BRONZE	SURFACE:TIN PLATED 1μm min UNDER PLATING:NICKEL PLATED 0.5μm min	3	PHOSPHOR BRONZE	SURFACE:TIN PLATED 1μm min UNDER PLATING:NICKEL PLATED 0.5μm min
1	POLYAMIDE	UL94V-0, BLACK			
NO.	MATERIAL	FINISH , REMARKS	NO.	MATERIAL	FINISH , REMARKS
UNITS mm		SCALE 5 : 1	COUNT 	DESCRIPTION OF REVISIONS	DESIGNED CHECKED DATE
		APPROVED : TS. SAKATA CHECKED : TS. KUMAZAWA DESIGNED : KT. ISHII DRAWN : KT. ISHII	08.10.20 08.10.17 08.10.16 08.10.16	DRAWING NO. PART NO. CODE NO.	EDC3-084862-01 DF11-8DS-2R26(05) CL543-0654-6-05