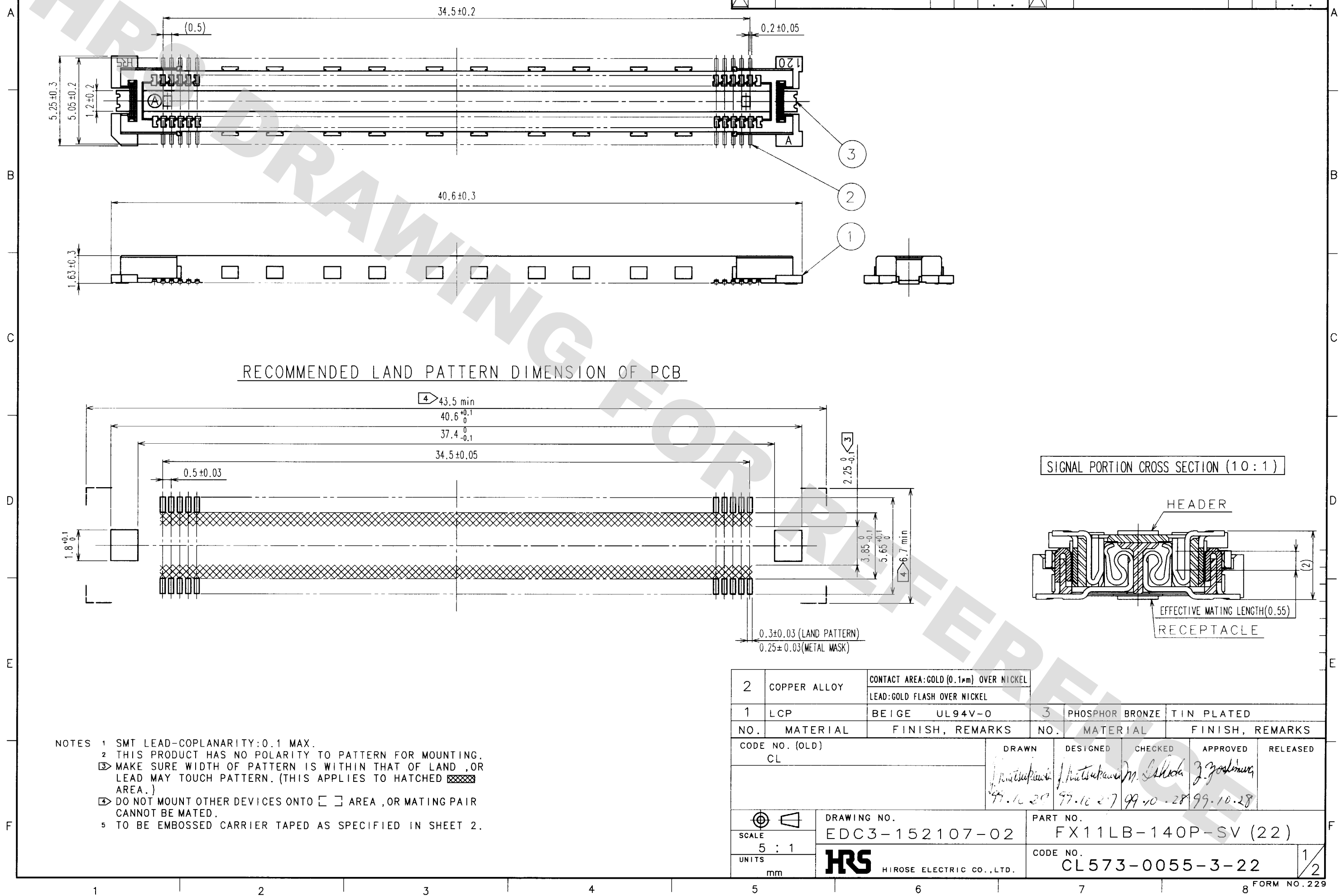


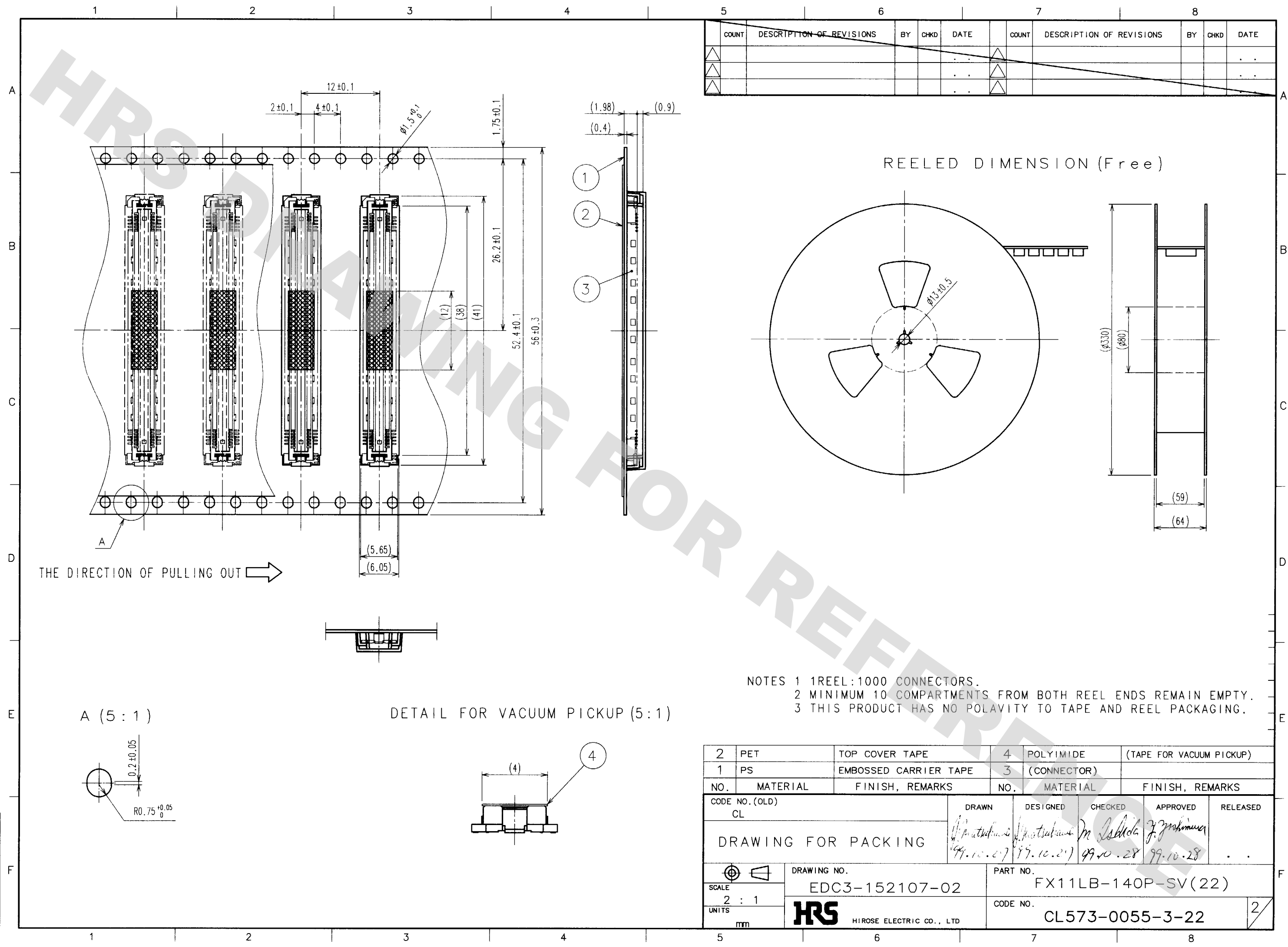
TO
PCK

2	COPPER ALLOY	CONTACT AREA:GOLD (0.1μm) OVER NICKEL				
		LEAD:GOLD FLASH OVER NICKEL				
1	LCP	BEIGE UL94V-0	3	PHOSPHOR BRONZE	TIN PLATED	
NO.	MATERIAL	FINISH, REMARKS	NO.	MATERIAL	FINISH, REMARKS	
CODE NO. (OLD) CL			DRAWN	DESIGNED	CHECKED	APPROVED
			99.10.29	99.10.27	99.10.28	99.10.28
DRAWING NO. EDC3-152107-02			PART NO. FX11LB-140P-SV (22)			
SCALE 5 : 1			CODE NO. CL573-0055-3-22			
UNITS mm			1/2			



DRAWING FOR REFERENCE: This is subject to change without notice
08/11/2012

TO
PCK



F