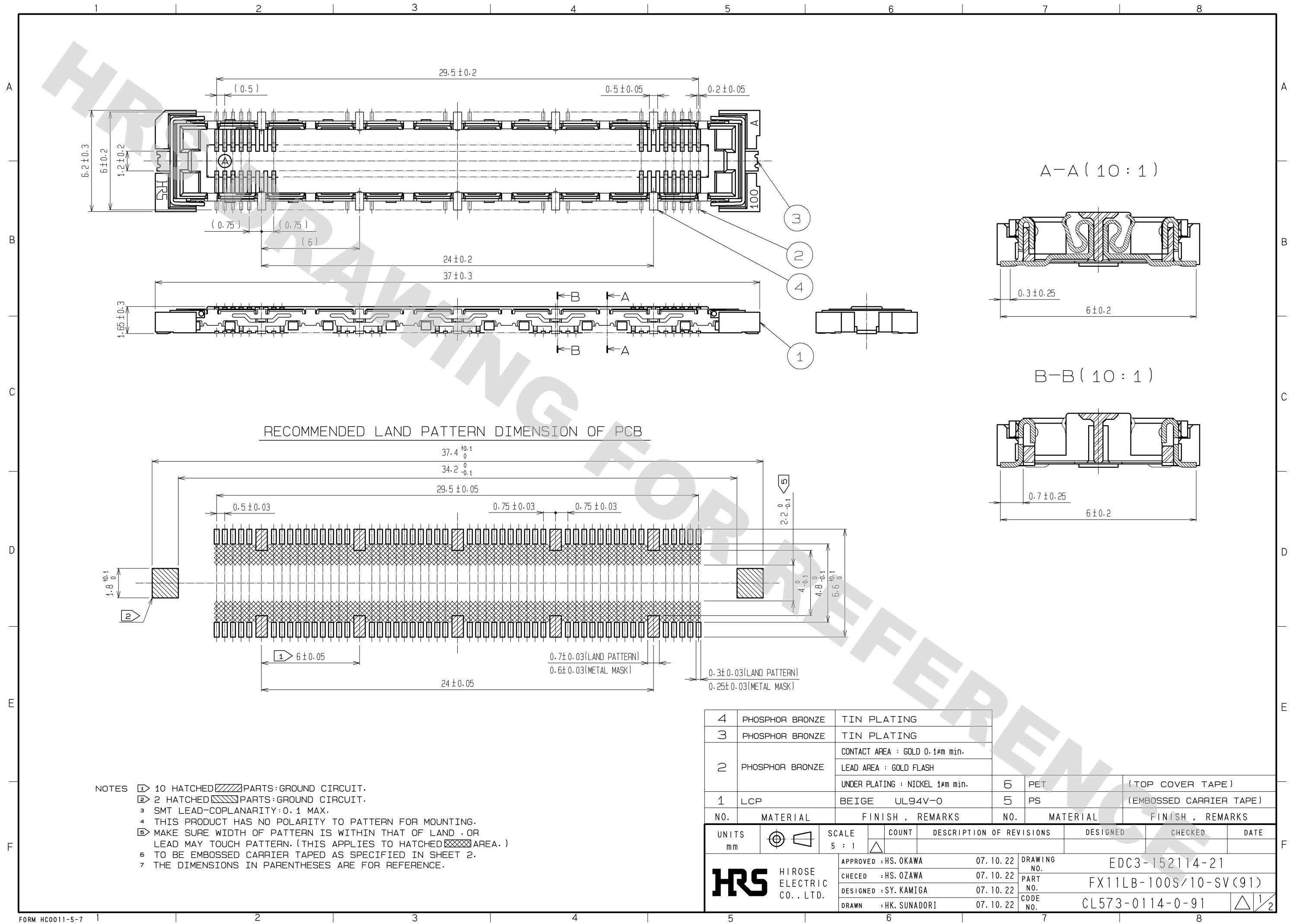
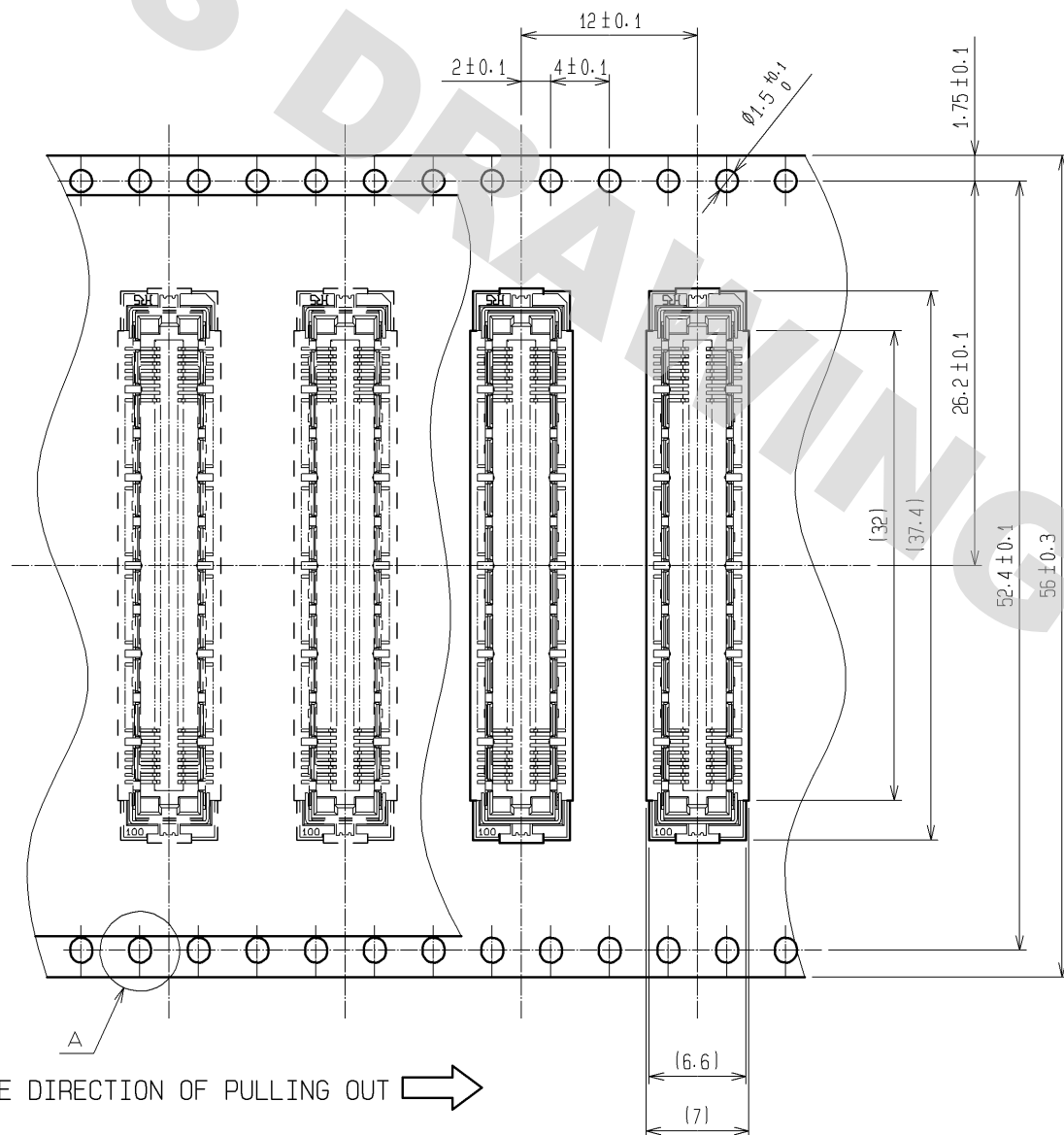


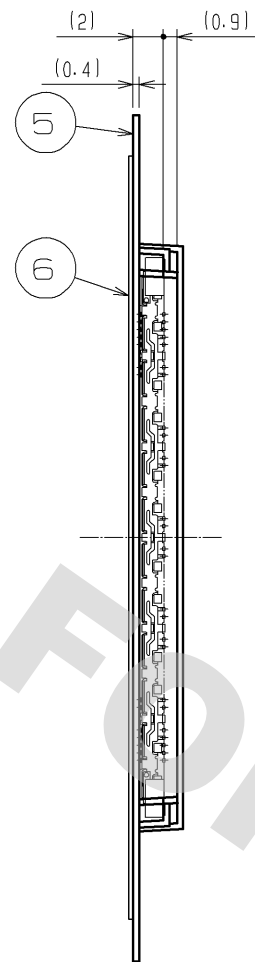
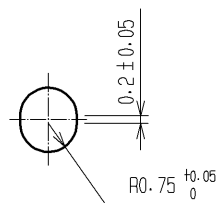
DRAWING FOR REFERENCE: This is subject to change without notice
08/11/2012



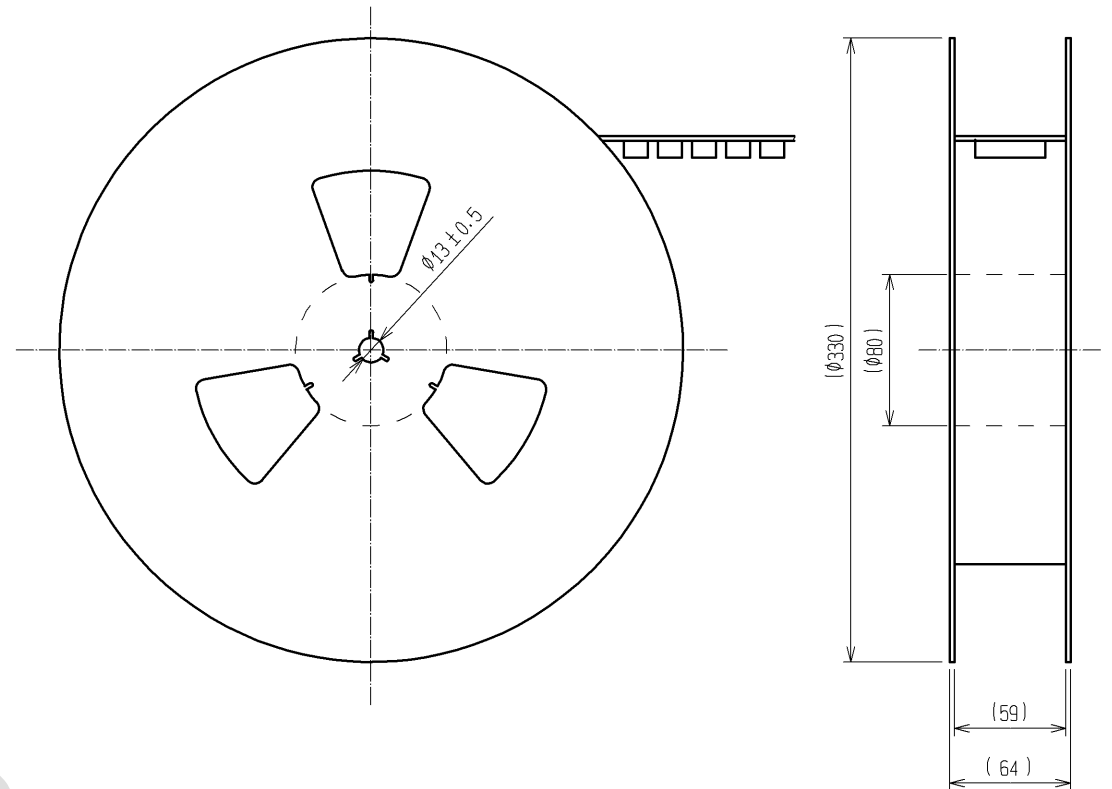
DRAWING FOR PACKING(2:1)



A(5:1)



REELED DIMENSION(Free)



- NOTES 1 1REEL:1000 CONNECTORS.
2 MINIMUM 10 COMPARTMENTS FROM BOTH REEL ENDS REMAIN EMPTY.
3 THIS PRODUCT HAS NO POLAVITY TO TAPE AND REEL PACKAGING.
4 THE DIMENSIONS IN PARENTHESES ARE FOR REFERENCE.

HRS

DRAWING NO.	EDC3-152114-21
PART NO.	FX11LB-100S/10-SV(91)
CODE NO.	CL573-0114-0-91

2/2