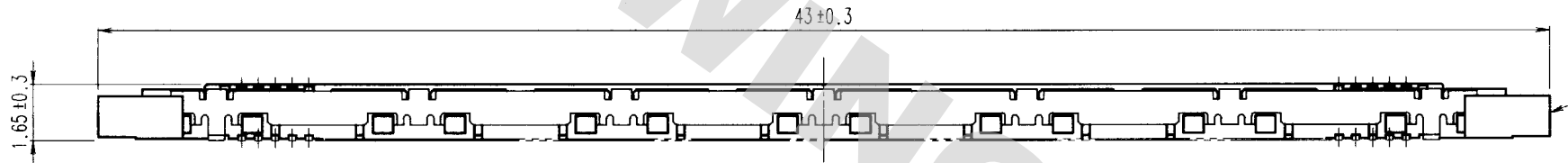
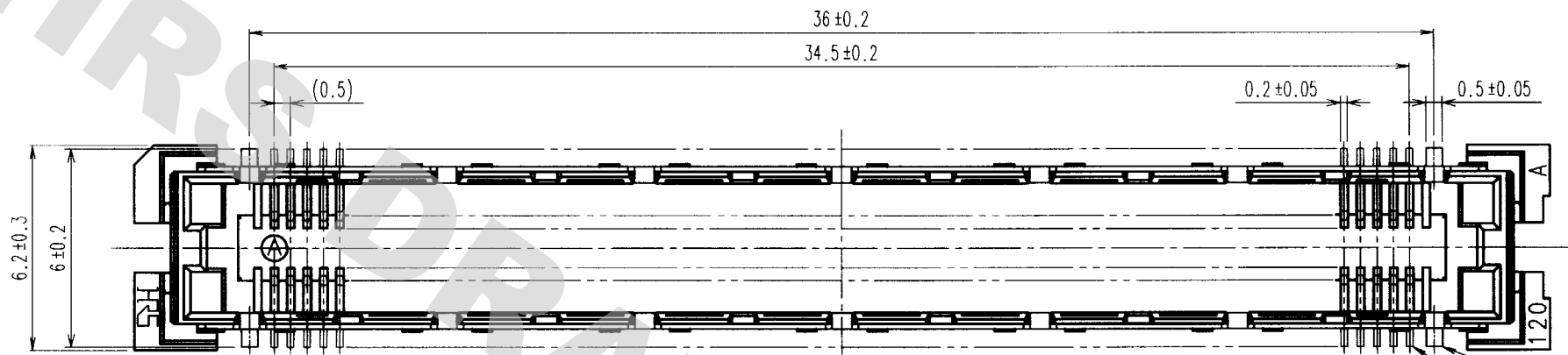


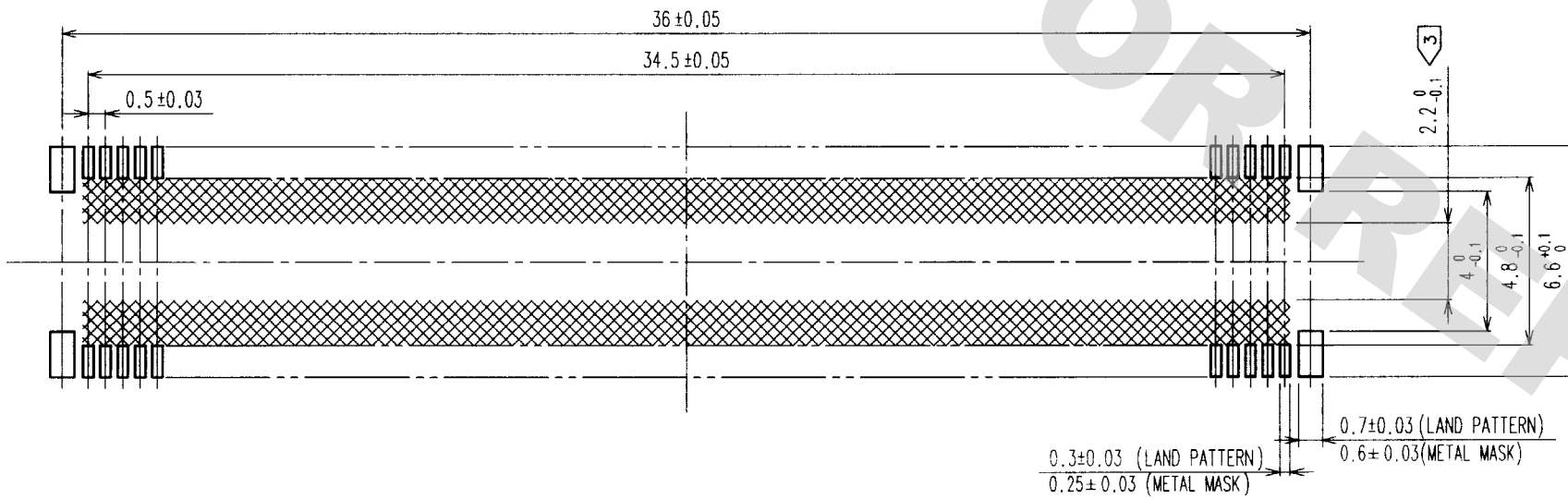
DRAWING FOR REFERENCE: This is subject to change without notice
08/11/2012

TO
PCK

A
B
C
D
E
F



RECOMMENDED LAND PATTERN DIMENSION OF PCB



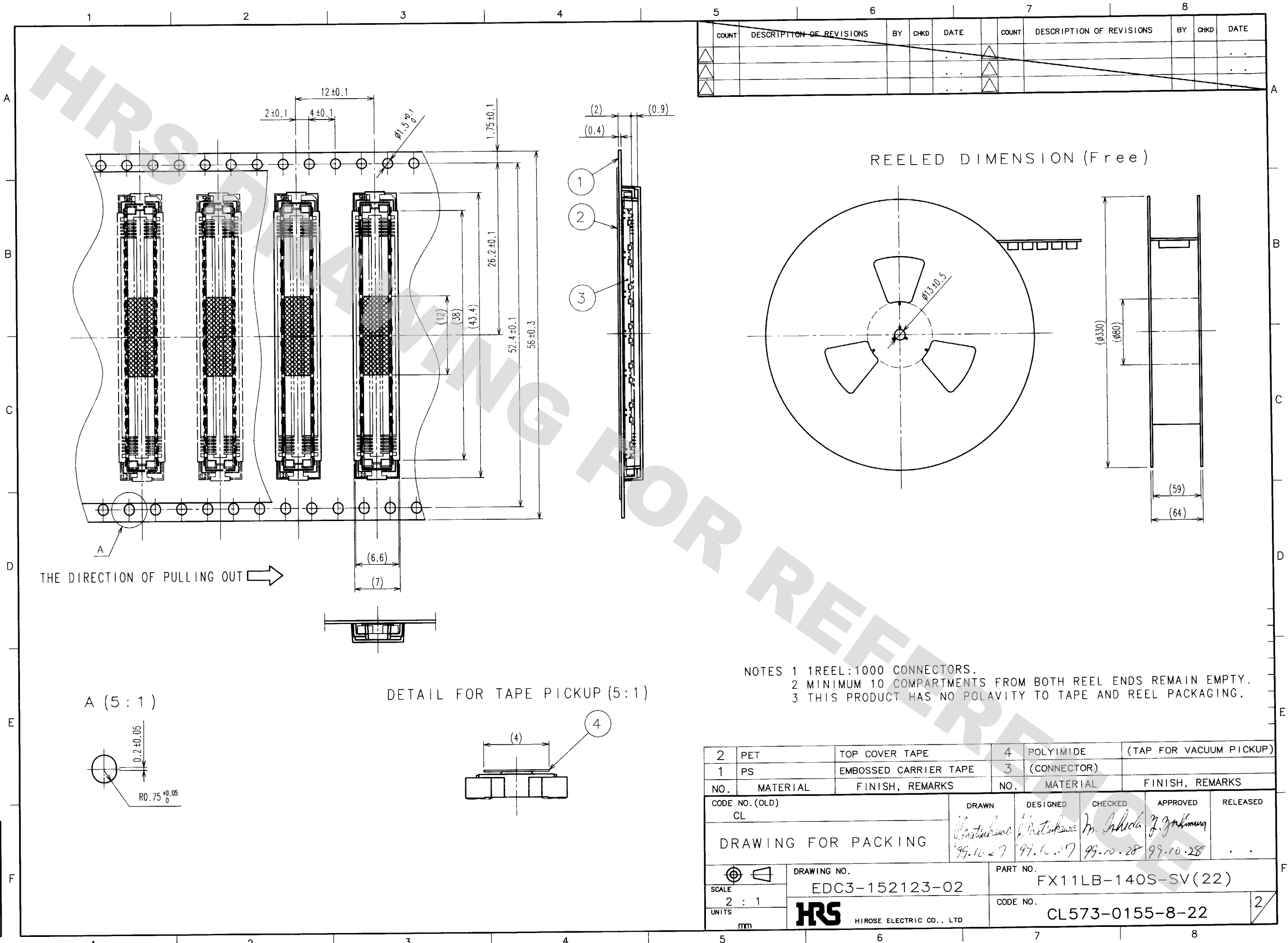
- NOTES
- 1 SMT LEAD-COPLANARITY:0.1 MAX.
 - 2 THIS PRODUCT HAS NO POLARITY TO PATTERN FOR MOUNTING.
 - 3 MAKE SURE WIDTH OF PATTERN IS WITHIN THAT OF LAND ,OR LEAD MAY TOUCH PATTERN. (THIS APPLIES TO HATCHED AREA.)
 - 4 TO BE EMBOSSED CARRIER TAPED AS SPECIFIED IN SHEET 2.

| COUNT | DESCRIPTION OF REVISIONS | BY | CHKD | DATE | COUNT | DESCRIPTION OF REVISIONS | BY | CHKD | DATE |
|-------|--------------------------|----|------|------|-------|--------------------------|----|------|------|
| △ | | | | . . | △ | | | | . . |
| △ | | | | . . | △ | | | | . . |
| △ | | | | . . | △ | | | | . . |

| | | | | | | |
|----------------------|-----------------|---------------------------------------|-----------------------------------|----------------------------------|--------------------------------------|----------|
| 2 | PHOSPHOR BRONZE | CONTACT AREA:GOLD (0.1μm) OVER NICKEL | | | | |
| | | LEAD:GOLD FLASH OVER NICKEL | | | | |
| 1 | LCP | BEIGE UL94V-0 | 3 | PHOSPHOR BRONZE | TIN PLATED | |
| NO. | MATERIAL | FINISH, REMARKS | NO. | MATERIAL | FINISH, REMARKS | |
| CODE NO. (OLD) CL | | DRAWN Matsukawa 99.10.27 | DESIGNED Matsukawa 99.10.27 | CHECKED M. Ishida 99.10.28 | APPROVED Z. Yoshimura 99.10.28 | RELEASED |
| SCALE 5 : 1 | | DRAWING NO. EDC3-152123-02 | | PART NO. FX11LB-140S-SV (22) | | |
| UNITS mm | | HRS HIROSE ELECTRIC CO.,LTD. | | CODE NO. CL573-0155-8-22 | | 1/2 |

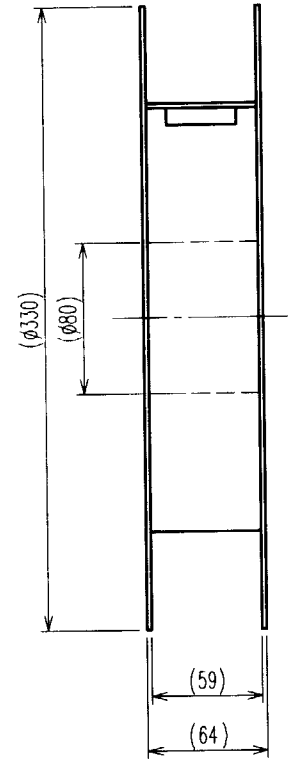
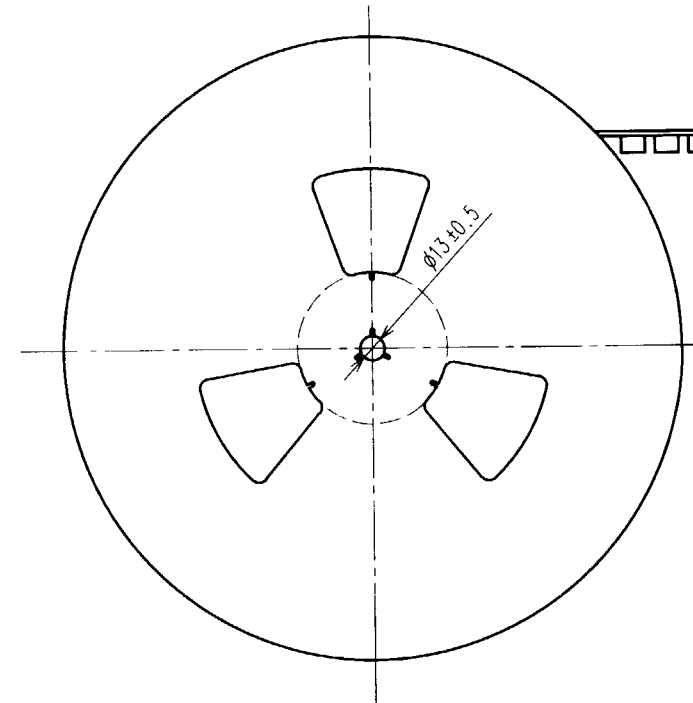
DRAWING FOR REFERENCE: This is subject to change without notice
08/11/2012

TO
PCK



| 5 | | | | | 6 | | | | 7 | | | | 8 | | | | |
|---|-------|--------------------------|----|------|------|---|-------|--------------------------|----|------|------|---|-------|--------------------------|----|------|------|
| | COUNT | DESCRIPTION OF REVISIONS | BY | CHKD | DATE | | COUNT | DESCRIPTION OF REVISIONS | BY | CHKD | DATE | | COUNT | DESCRIPTION OF REVISIONS | BY | CHKD | DATE |
| △ | | | | | . | △ | | | | | . | △ | | | | | . |
| △ | | | | | . | △ | | | | | . | △ | | | | | . |
| △ | | | | | . | △ | | | | | . | △ | | | | | . |

REELED DIMENSION (Free)



- NOTES 1 1 REEL: 1000 CONNECTORS.
2 MINIMUM 10 COMPARTMENTS FROM BOTH REEL ENDS REMAIN EMPTY.
3 THIS PRODUCT HAS NO POLARITY TO TAPE AND REEL PACKAGING.

| | | | | | |
|---------------------------------|----------|-----------------------|--------------------------------|-------------|-------------------------|
| 2 | PET | TOP COVER TAPE | 4 | POLYIMIDE | (TAP FOR VACUUM PICKUP) |
| 1 | PS | EMBOSSED CARRIER TAPE | 3 | (CONNECTOR) | |
| NO. | MATERIAL | FINISH, REMARKS | NO. | MATERIAL | FINISH, REMARKS |
| CODE NO. (OLD) CL | | | DRAWN | DESIGNED | CHECKED |
| DRAWING FOR PACKING | | | 99.10.27 | 99.10.27 | 99.10.28 |
| SCALE 2 : 1 | | | PART NO. FX11LB-140S-SV(22) | | |
| UNITS mm | | | CODE NO. CL573-0155-8-22 | | |
| HRS HIROSE ELECTRIC CO., LTD | | | 2 | | |