

1 2 3 4 5 6 7 8

19.5±0.2
(0.5)
0.2±0.05
5.25±0.3
5.05±0.2
1.2±0.2
08
A
3
2
1
24.6±0.3
2.13±0.3
(0.6)
2-(Ø0.8)
20±0.1

SIGNAL PORTION CROSS SECTION(10:1)
5.05±0.2
0.3±0.25
HEADER
(2.5)
EFFECTIVE MATING LENGTH (1)
RECEPTACLE

RECOMMENDED LAND PATTERN DIMENSION OF PCB
(RECOMMENDED METAL MASK THICKNESS:0.15mm)

4 27.5 min
24.6^{+0.1}₀
21.4⁰_{-0.1}
20±0.05
19.5±0.05
0.5±0.03
1.8^{+0.1}₀
Ø0.9±0.05
0.25±0.05
2.25⁰_{-0.1}
3.65⁰_{-0.1}
5.65^{+0.1}₀
6.7 min
Ø1±0.05
0.3±0.03(LAND PATTERN)
0.25±0.03(METAL MASK)

NOTES
1 SMT LEAD-COPLANARITY:0.1 MAX.
2 THIS PRODUCT HAS NO POLARITY TO PATTERN FOR MOUNTING.
3 MAKE SURE WIDTH OF PATTERN IS WITHIN THAT OF LAND ,OR LEAD MAY TOUCH PATTERN. (THIS APPLIES TO HATCHED AREA.)
4 DO NOT MOUNT OTHER DEVICES ONTO [] AREA ,OR MATING PAIR CANNOT BE MATED.
5 TO BE EMBOSSED CARRIER TAPED AS SPECIFIED IN SHEET 2.
6 THE DIMENSIONS IN PARENTHESES ARE FOR REFERENCE.

NO.	MATERIAL	FINISH , REMARKS	NO.	MATERIAL	FINISH , REMARKS
3	PHOSPHOR BRONZE	TIN PLATING			
2	COPPER ALLOY	CONTACT AREA : GOLD 0.1µm min. LEAD AREA : GOLD 0.05µm min. UNDER PLATING : NICKEL 1µm min.	6	POLYIMIDE	(TAPE FOR VACUUM PICKUP)
1	LCP	BEIGE UL94V-0	5	PET	TOP COVER TAPE
			4	PS	EMBOSSED CARRIER TAPE

UNITS	SCALE	COUNT	DESCRIPTION OF REVISIONS	DESIGNED	CHECKED	DATE
mm	5 : 1	△				
HRS HIROSE ELECTRIC CO., LTD.	APPROVED	:HS. OKAWA	11.01.26	DRAWING NO. EDC3-152439-02		
	CHECKED	:HT. YAMAGUCHI	11.01.26	PART NO. FX11A-80P-SV(22)		
	DESIGNED	:SY. KAMIGA	11.01.26	CODE NO. CL573-0548-0-22		
	DRAWN	:HK. SUNADORI	11.01.26			

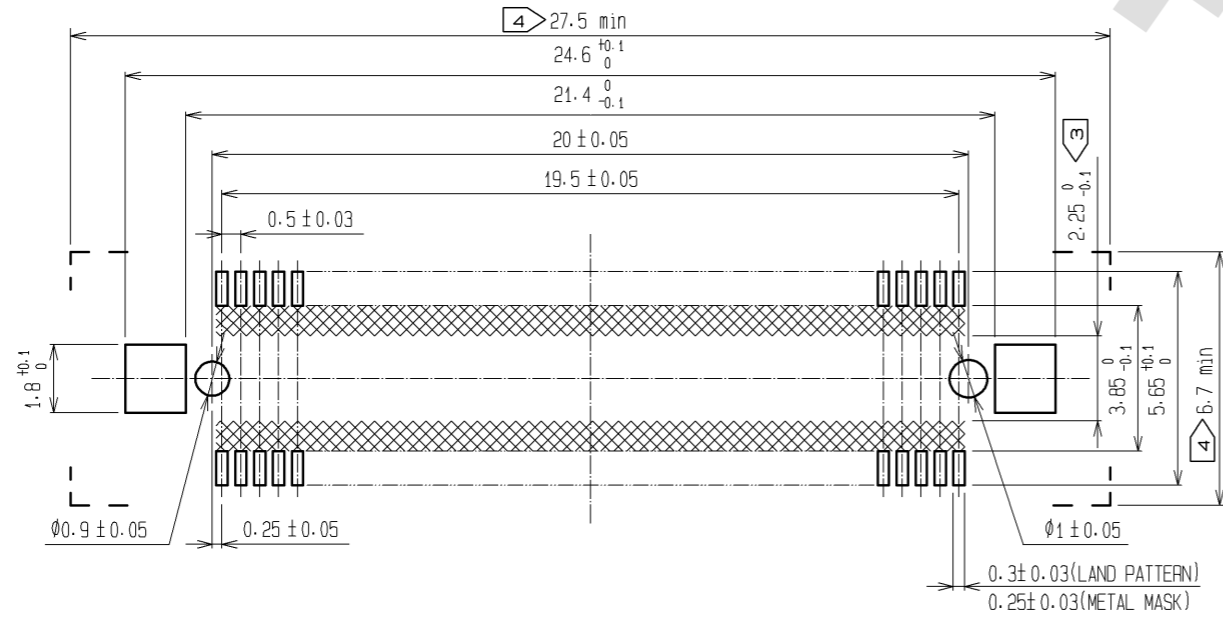
FORM HC0011-5-7 1 2 3 4 5 6 7 8



A cross-sectional diagram of a cable assembly. The diagram shows a central cable with a braided shield and an inner conductor, surrounded by a plastic jacket. The assembly is terminated with a header and a receptacle. Dimensions are indicated with arrows and text:


- Overall length: 5.05 ± 0.2
- Header length: 0.3 ± 0.25
- Receptacle length: 2.5
- Effective mating length: (1)

Labels include: HEADER, RECEPTACLE, and EFFECTIVE MATING LENGTH (1).

RECOMMENDED LAND PATTERN DIMENSION OF PCB
(RECOMMENDED METAL MASK THICKNESS:0.15mm)

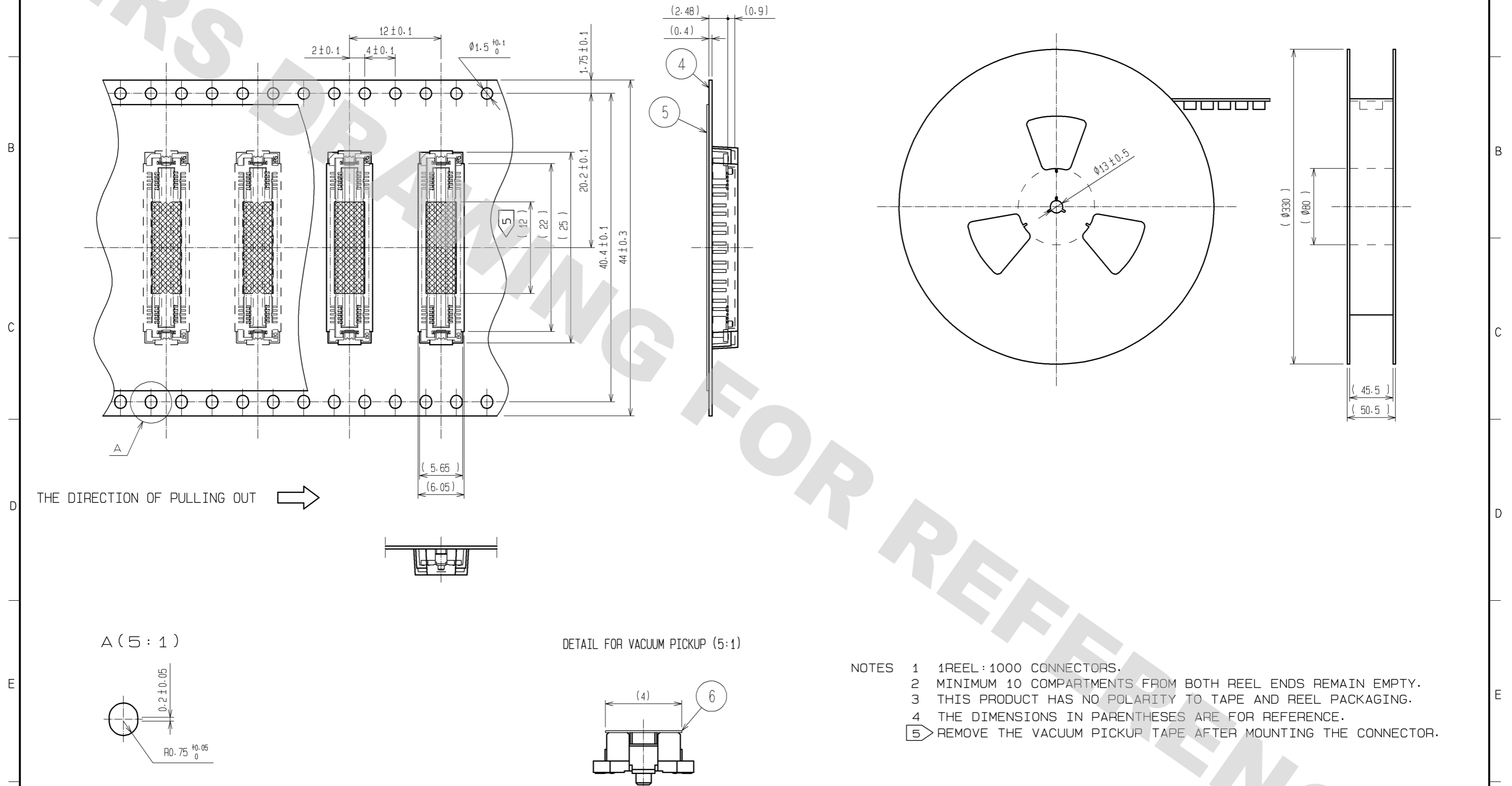


- NOTES
- 1 SMT LEAD-COPLANARITY:0.1 MAX.
 - 2 THIS PRODUCT HAS NO POLARITY TO PATTERN FOR MOUNTING.
 - 3 MAKE SURE WIDTH OF PATTERN IS WITHIN THAT OF LAND ,OR LEAD MAY TOUCH PATTERN.(THIS APPLIES TO HATCHED  AREA.)
 - 4 DO NOT MOUNT OTHER DEVICES ONTO  AREA ,OR MATING PAIR CANNOT BE MATED.
 - 5 TO BE EMBOSSED CARRIER TAPED AS SPECIFIED IN SHEET 2.
 - 6 THE DIMENSIONS IN PARENTHESES ARE FOR REFERENCE.

3	PHOSPHOR BRONZE	TIN PLATING						
2	COPPER ALLOY	CONTACT AREA : GOLD 0.1μm min.		6	POLYIMIDE	(TAPE FOR VACUUM PICKUP)		
		LEAD AREA : GOLD 0.05μm min.		5	PET	TOP COVER TAPE		
		UNDER PLATING : NICKEL 1μm min.		4	PS	EMBOSSD CARRIER TAPE		
1	LCP	BEIGE UL94V-0						
NO.	MATERIAL	FINISH , REMARKS		NO.	MATERIAL	FINISH , REMARKS		
UNITS mm		SCALE 5 : 1		COUNT	DESCRIPTION OF REVISIONS	DESIGNED	CHECKED	DATE
 HIROSE ELECTRIC CO., LTD.		APPROVED : HS. OKAWA	11. 01. 26	DRAWING NO.	EDC3-152439-02			
		CHECKED : HT. YAMAGUCHI	11. 01. 26	PART NO.	FX11A-80P-SV(22)			
		DESIGNED : SY. KAMIGA	11. 01. 26	CODE NO.	CL573-0548-0-22			
		DRAWN : HK. SUNADORI	11. 01. 26					
						1	2	

DRAWING FOR PACKING(2:1)

REELED DIMENSION(Free)



- NOTES
- 1 REEL : 1000 CONNECTORS.
 - 2 MINIMUM 10 COMPARTMENTS FROM BOTH REEL ENDS REMAIN EMPTY.
 - 3 THIS PRODUCT HAS NO POLARITY TO TAPE AND REEL PACKAGING.
 - 4 THE DIMENSIONS IN PARENTHESES ARE FOR REFERENCE.
 - 5 REMOVE THE VACUUM PICKUP TAPE AFTER MOUNTING THE CONNECTOR.

HRS

DRAWING NO.	EDC3-152439-02
PART NO.	FX11A-80P-SV(22)
CODE NO.	CL573-0548-0-22

2/2