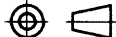

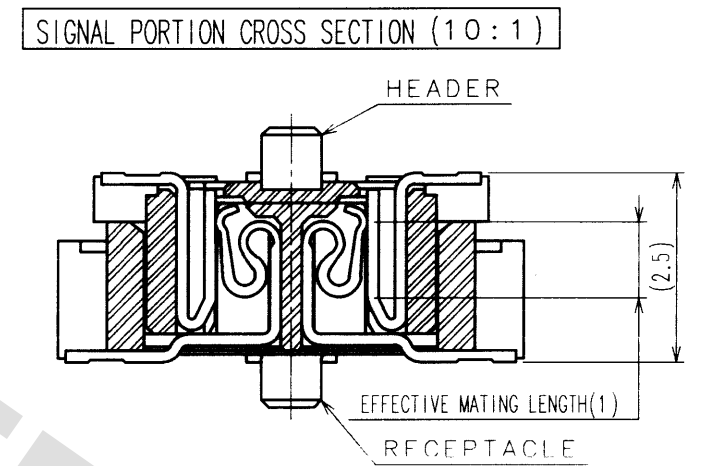





TO
PCK

2	COPPER ALLOY	CONTACT AREA:GOLD (0.1μm) OVER NICKEL	
		LEAD:GOLD FLASH OVER NICKEL	
1	LCP	BEIGE UL94V-0	3 PHOSPHOR BRONZE TIN PLATED
NO.	MATERIAL	FINISH, REMARKS	NO. MATERIAL FINISH, REMARKS
CODE NO. (OLD) CL		DRAWN J.MATSUKAWA 00.01.15	DESIGNED J.MATSUKAWA 00.01.15
		CHECKED M.ISHIDA 00.01.17	APPROVED Y.YOSHIMURA 00.01.17
		DRAWING NO. EDC3-152606	PART NO. FX11A-100P-SV
SCALE 5 : 1		 HIROSE ELECTRIC CO.,LTD.	CODE NO. CL573-0543-7
UNITS mm			1/1



NOTES 1 SMT LEAD-COPLANARITY:0.1 MAX.
2 THIS PRODUCT HAS NO POLAVITY TO PATTERN FOR MOUNTING.
3 MAKE SURE WIDTH OF PATTERN IS WITHIN THAT OF LAND ,OR
LEAD MAY TOUCH PATTERN. (THIS APPLIES TO HATCHED  AREA.)
4 DO NOT MOUNT OTHER DEVICES ONTO   AREA ,OR MATING PAIR
CANNOT BE MATED.