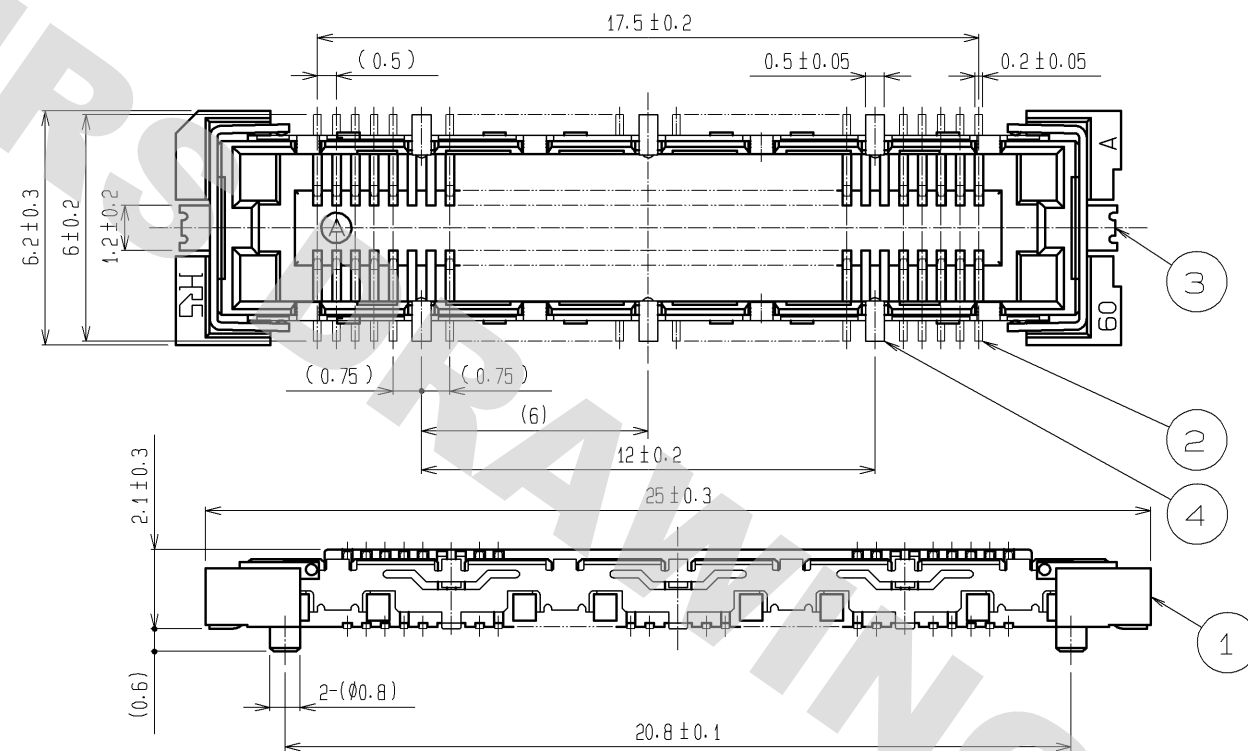
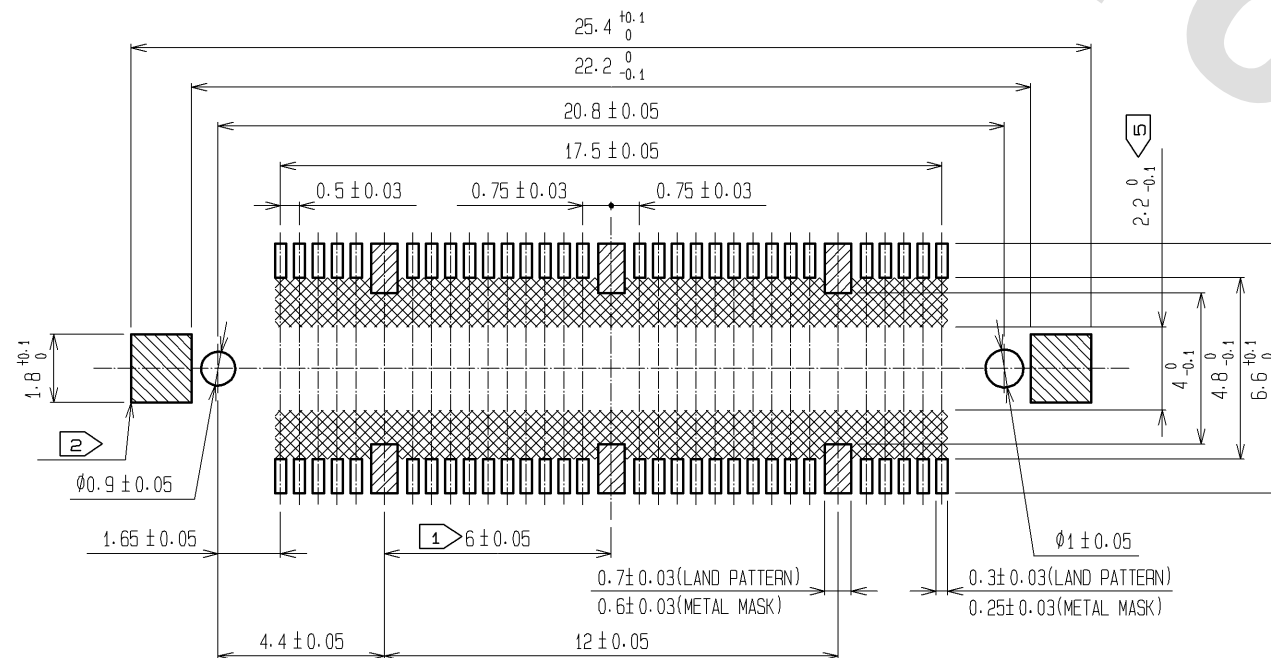


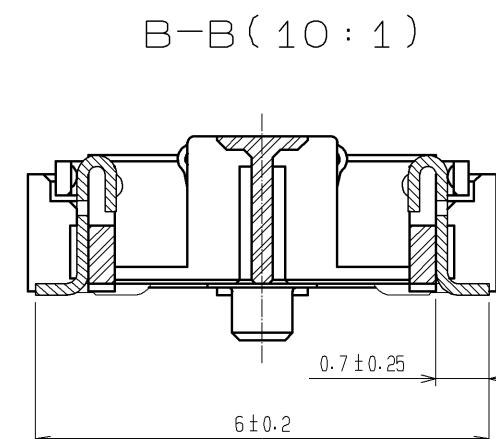
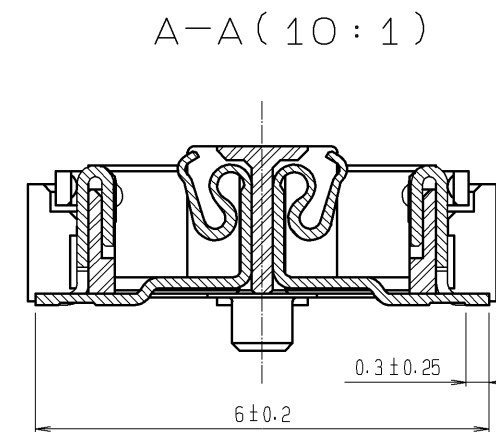
DRAWING FOR REFERENCE: This is subject to change without notice  
08/11/2012



RECOMMENDED LAND PATTERN DIMENSION OF PCB  
(RECOMMENDED METAL MASK THICKNESS: 0.15mm)



- NOTES
- 6 HATCHED PARTS: GROUND CIRCUIT.
  - 2 HATCHED PARTS: GROUND CIRCUIT.
  - SMT LEAD-COPLANARITY: 0.1 MAX.
  - THIS PRODUCT HAS NO POLARITY TO PATTERN FOR MOUNTING.
  - MAKE SURE WIDTH OF PATTERN IS WITHIN THAT OF LAND, OR LEAD MAY TOUCH PATTERN. (THIS APPLIES TO HATCHED AREA.)
  - TO BE EMBOSSED CARRIER TAPED AS SPECIFIED IN SHEET 2.
  - THE DIMENSIONS IN PARENTHESES ARE FOR REFERENCE.

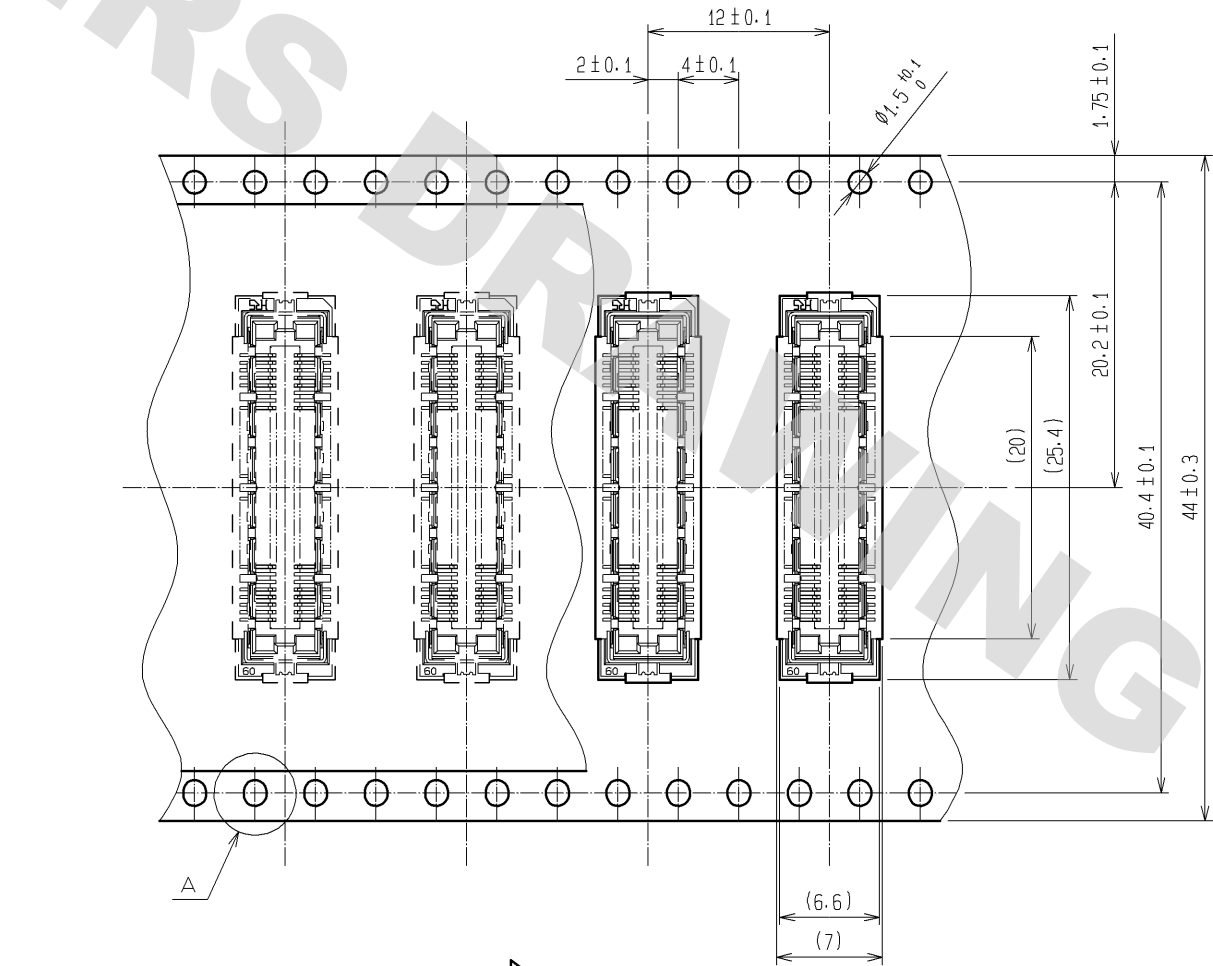


3, 4	PHOSPHOR BRONZE	TIN PLATING			
2	PHOSPHOR BRONZE	CONTACT AREA : GOLD 0.1µm min.			
		LEAD AREA : GOLD FLASH			
		UNDER PLATING : NICKEL 1µm min.	6	PET	TOP COVER TAPE
1	LCP	BEIGE UL94V-0	5	PS	EMBOSSD CARRIER TAPE
NO.	MATERIAL	FINISH, REMARKS	NO.	MATERIAL	FINISH, REMARKS
UNITS mm		SCALE 5 : 1	COUNT 	DESCRIPTION OF REVISIONS	DESIGNED CHECKED DATE
HIROSE ELECTRIC CO., LTD.		APPROVED : HS. OKAWA	08.11.06	DRAWING NO.	EDC3-152632-21
		CHECKED : HT. YAMAGUCHI	08.11.06	PART NO.	FX11A-60S/6-SV(91)
		DESIGNED : SY. KAMIGA	08.11.06	CODE NO.	CL573-0702-9-91
		DRAWN : HK. SUNADORI	08.11.05		

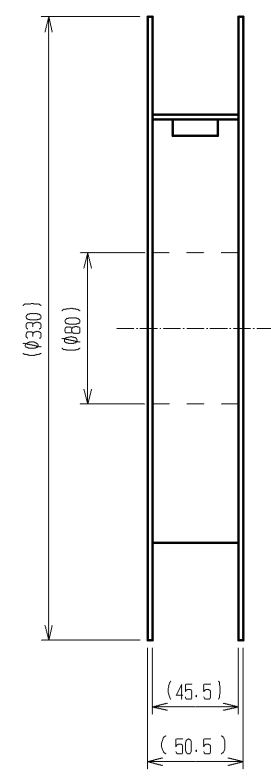
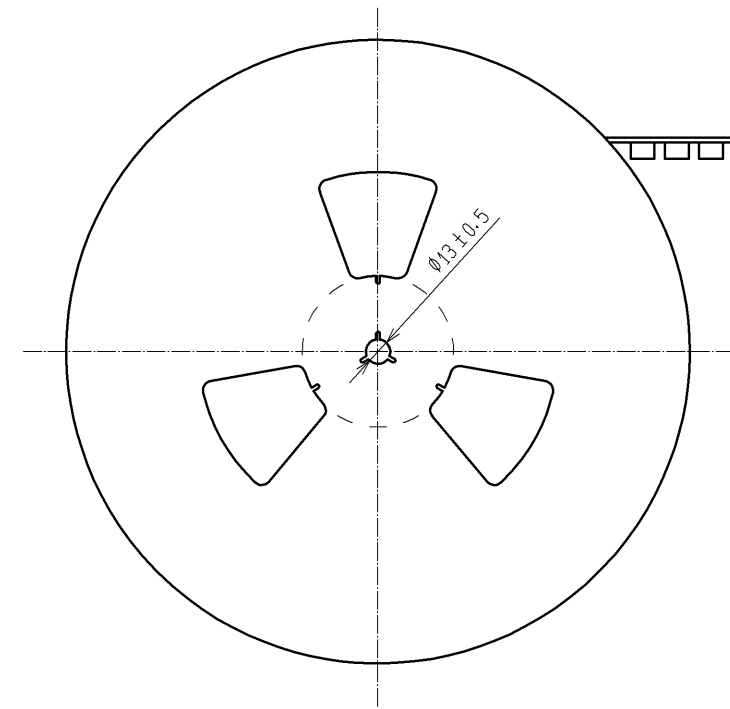
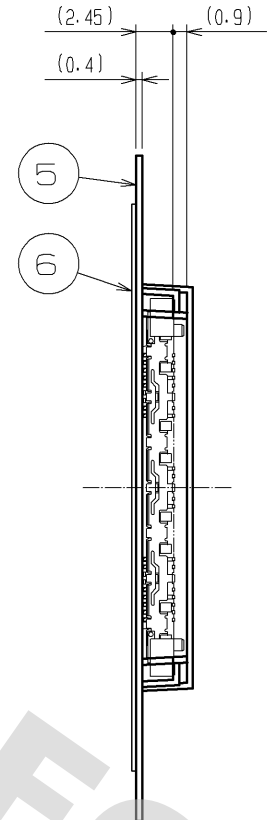
DRAWING FOR REFERENCE: This is subject to change without notice  
08/11/2012

# DRAWING FOR PACKING(2:1)

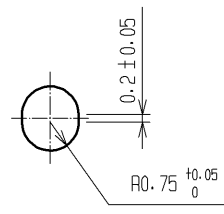
REELED DIMENSION(Free)



THE DIRECTION OF PULLING OUT →



A(5:1)



- NOTES
- 1 REEL : 1000 CONNECTORS.
  - 2 MINIMUM 10 COMPARTMENTS FROM BOTH REEL ENDS REMAIN EMPTY.
  - 3 THIS PRODUCT HAS NO POLARITY TO TAPE AND REEL PACKAGING.
  - 4 THE DIMENSIONS IN PARENTHESES ARE FOR REFERENCE.

HRS

DRAWING NO.	EDC3-152632-21
PART NO.	FX11A-60S/6-SV(91)
CODE NO.	CL573-0702-9-91

2/2