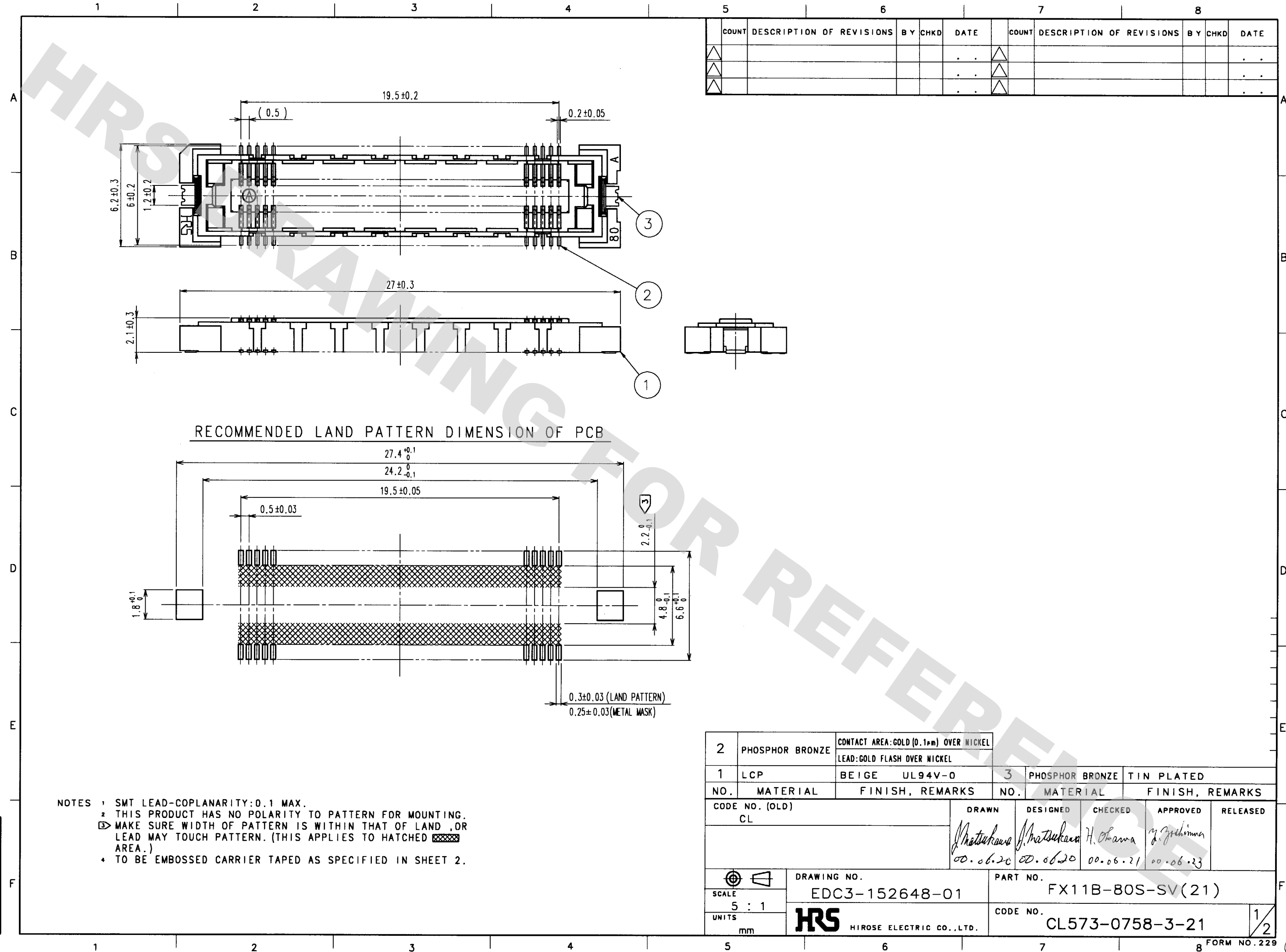


DRAWING FOR REFERENCE: This is subject to change without notice
08/11/2012

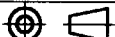

TO
PCK

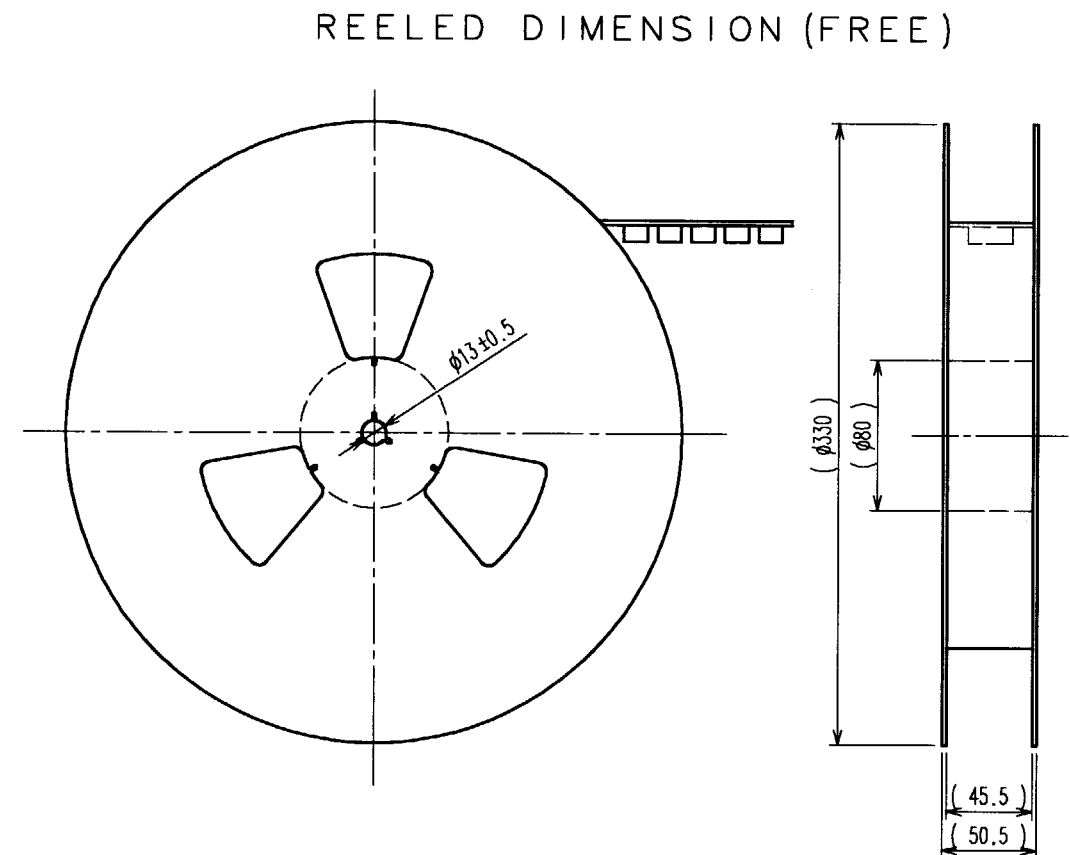
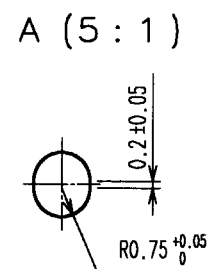


COUNT	DESCRIPTION OF REVISIONS	BY	CHKD	DATE	COUNT	DESCRIPTION OF REVISIONS	BY	CHKD	DATE

2	PHOSPHOR BRONZE	CONTACT AREA: GOLD (0.1μm) OVER NICKEL							
		LEAD: GOLD FLASH OVER NICKEL							
1	LCP	BEIGE UL94V-0	3	PHOSPHOR BRONZE	TIN PLATED				
NO.	MATERIAL	FINISH, REMARKS	NO.	MATERIAL	FINISH, REMARKS				
CODE NO. (OLD)	CL		DRAWN	DESIGNED	CHECKED	APPROVED	RELEASED		
			<i>Matsukawa</i>	<i>Matsukawa</i>	<i>H. Okawa</i>	<i>T. Yoshimura</i>			
			00.06.20	00.06.20	00.06.21	00.06.23			
SCALE	5 : 1	DRAWING NO.	EDC3-152648-01	PART NO.	FX11B-80S-SV(21)				
UNITS	mm	HRS	HIROSE ELECTRIC CO., LTD.	CODE NO.	CL573-0758-3-21				

TO
PCK

2	PET	TOP COVER TAPE			
1	PS	EMBOSSD CARRIER TAPE	3	(CONNECTOR)	
NO.	MATERIAL	FINISH, REMARKS	NO.	MATERIAL	FINISH, REMARKS
CODE NO. (OLD) CL			DRAWN	DESIGNED	CHECKED
DRAWING FOR PACKING			<i>Matsuoka</i> 00.06.20	<i>Matsuoka</i> 00.06.20	<i>H. Okawa</i> 00.06.21
			APPROVED <i>T. Furukawa</i> 00.06.23		
 DRAWING NO. EDC3-152648-01			PART NO. FX11B-80S-SV(21)		
SCALE 2 : 1			CODE NO. CL573-0758-3-21		
UNITS mm			2		
 HIROSE ELECTRIC CO., LTD					



NOTES 1 1 REEL: 1000 CONNECTORS.
2 MINIMUM 10 COMPARTMENTS FROM BOTH REEL ENDS REMAIN EMPTY.
3 THIS PRODUCT HAS NO POLARITY TO TAPE AND REEL PACKAGING.