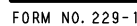


DRAWING F
08/11/2012



1 2 3 4 5 6 7 8

DRAWING FOR PACKAGING (2:1)

2±0.1 4±0.1 12±0.1 1.75±0.1 14.2±0.1 32±0.3 17.5 20.1 1.5^{+0.1}₀ (0.4) (4.3) (5.5) (8.4)

UNREELING DIRECTION

REEL DIMENSION (FREE)

12 32.4 13±0.5 21±0.8 (380) (80)

TRAILER 5 EQUIPPED (2000 CONNECTORS) LEADER (400mm MIN.)

EMBOSSED CARRIER TAPE TOP COVER TAPE 10 EMPTY COMPONENT COMPARTMENTS MIN.

NOTE 5 1 REEL : 2000 CONNECTORS.

4	POLYSTYRENE	(EMBOSSED CARRIER TAPE)	5	POLYESTER	(TOP COVER TAPE)
NO.	MATERIAL	FINISH, REMARKS	NO.	MATERIAL	FINISH, REMARKS
UNITS	mm	SCALE 2:1	COUNT	DESCRIPTION OF REVISIONS	DESIGNED
					CHECKED
					DATE

APPROVED	HS. OKAWA	07.05.22	DRAWING NO.	EDC3-156187-01
CHECKED	HS. OZAWA	07.05.22	PART NO.	FX12MB-80P-0.4SV
DESIGNED	KT. DOI	07.05.22	CODE NO.	CL573-1009-1-00
DRAWN	TS. MIYAKI	07.05.17		

HIROSE ELECTRIC CO., LTD.

2/3

FORM NO. 229-1

1 2 3 4 5 6 7 8

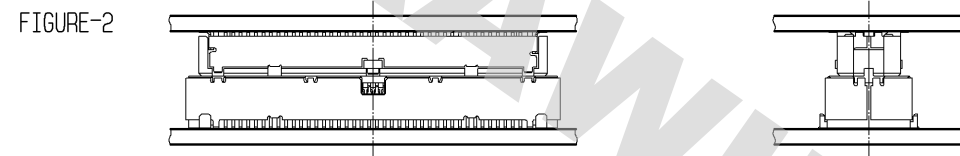
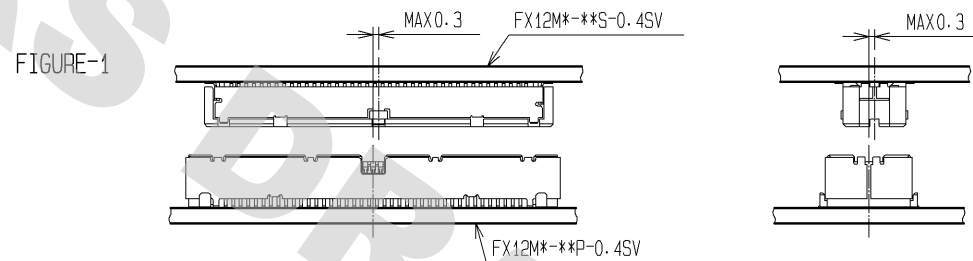
A horizontal number line with tick marks labeled 2, 3, 4, 5, 6, 7, and 8.

FORM NO. 229-1

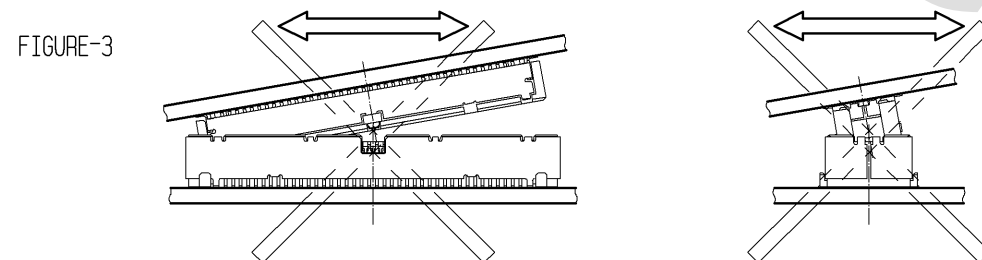
DRAWING FOR REFERENCE: This is subject to change without notice
08/11/2012

CAUTIONS FOR USE

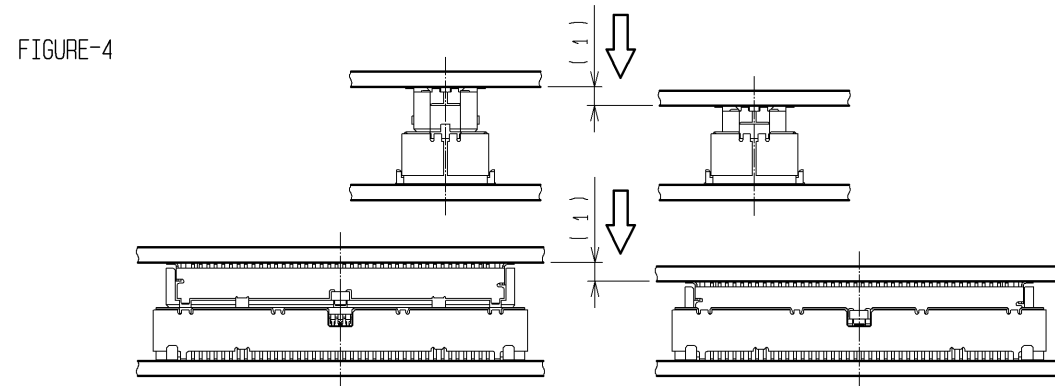
NOTES WHEN MATING FX12 SERIES CONNECTORS.



THE SELF ALIGNMENT RANGE OF THIS CONNECTOR IS 0.3 mm.
PLACE THE CONNECTORS AT THE INITIAL MATING POSITION WHERE ITS MISALIGNMENT IS WITHIN 0.3 mm.
THEN INSERT THE CONNECTOR ON THE CHAMFERED PARTS OF THE MATING-HALF'S OPENING. MAKE SURE TO
KEEP THE CONNECTORS PARALLEL TO EACH OTHER.
NOTE THAT ANGLED INSERTION OR THE PRESSURE APPLIED TO THE CONNECTORS BEFORE ALIGNMENT MAY
RESULT IN DAMAGE TO MOLDED HOUSING OR CONTACT DEFORMATION.

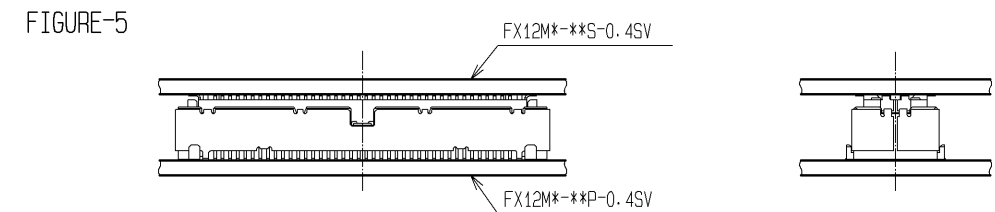


PRESS-DOWN EVENLY UNTIL SLIGHT RESISTANCE IS FELT.
OVERCOMING THIS SLIGHT RESISTANCE WILL COMPLETE THE MATING OF RECEPTACLE WITH HEADER.
A DEFINITE 'CLICK' SENSATION WILL CONFIRM THE FULLY MATED CONDITION.

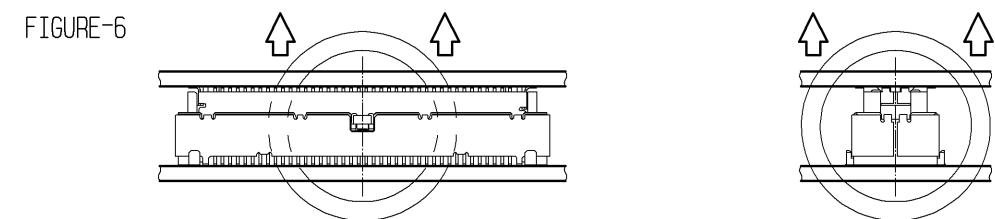


THE MATED CONDITIONS CAN BE RELEASED BY A DROP IMPACT.
FIX THE CONNECTORS BY APPLYING PRESSURE IN THE MATING DIRECTION WITH THE DEVICE OR A BUFFER MATERIAL.

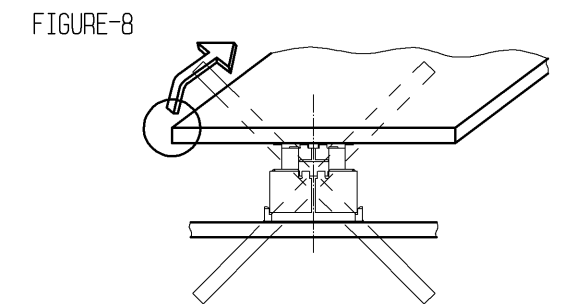
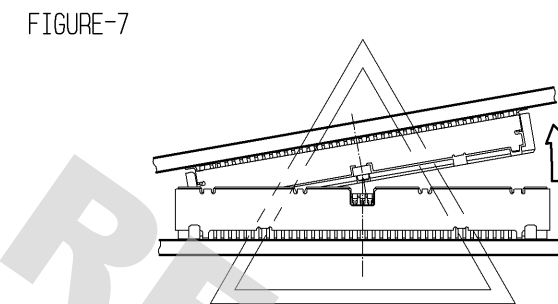
NOTES WHEN EXTRACTING



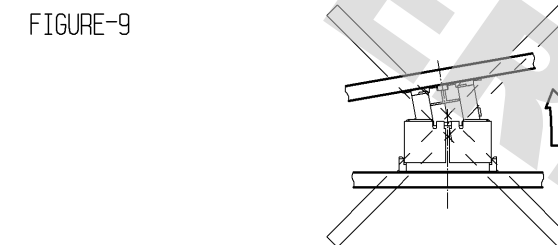
LEFT EVEN ONE SIDE, KEEPING BOTH BOARDS PARALLEL TO EACH OTHER.







WHEN HANDLING CIRCUMSTANCES PREVENT THE CONNECTOR FROM BEING KEPT
LEVEL DURING UN-MATING, ONE END MAY BE LIFTED SEPARATE AS SHOWN ON FIGURE-7.
DO NOT ATTEMPT THE START OF THE UN-MATING OF THE CONNECTORS FROM ONE SIDE (FIGURE-8)



WHEN REMOVAL IS FROM THE WIDTH ORIENTATION AS ILLUSTRATED IN THE DIAGRAM TO THE LEFT,
DAMAGE COULD BE CAUSED TO THE CONNECTOR. DO NOT PERFORM REMOVAL FROM THE WIDTH ORIENTATION.



UNITS mm		SCALE FREE	COUNT	DESCRIPTION OF REVISIONS	DESIGNED	CHECKED	DATE
							
 HIROSE ELECTRIC CO., LTD.			APPROVED : HS. OKAWA	07. 05. 22	DRAWING NO. EDC3-156187-01		
			CHECKED : HS. OZAWA	07. 05. 22	PART NO. FX12MB-80P-0.4SV		
			DESIGNED : KT. DOI	07. 05. 22	CODE NO. CL573-1009-1-00		
			DRAWN : TS. MIYAKI	07. 05. 17			
							<div>33</div>