

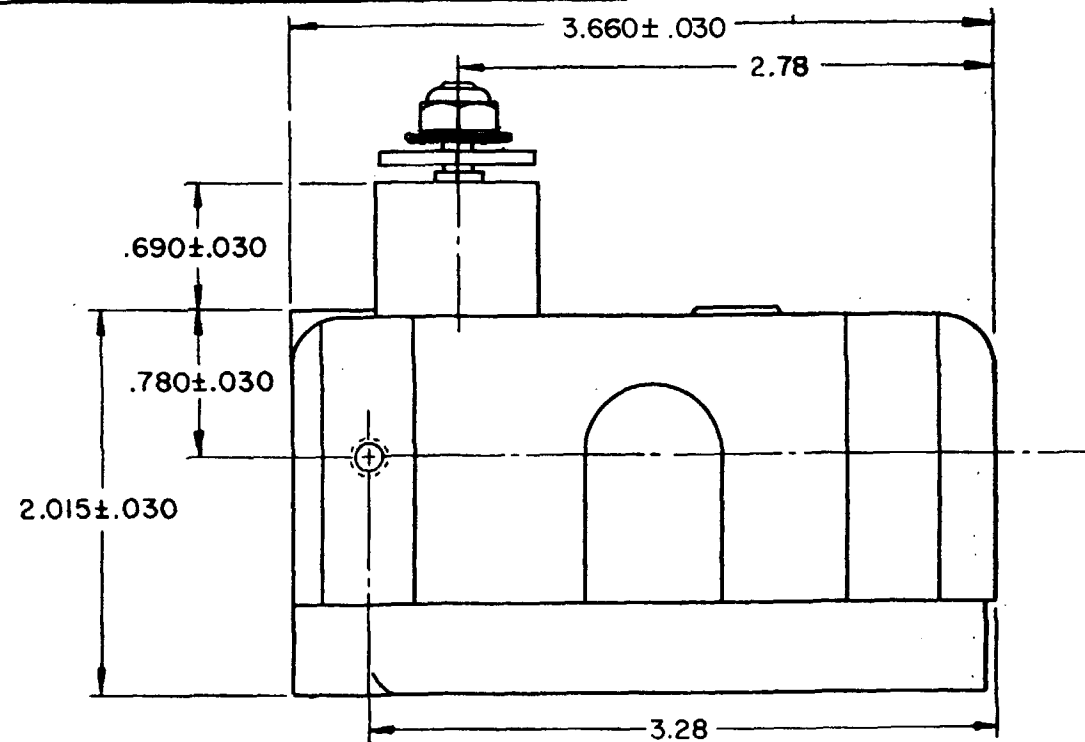
MICRO SWITCH
FREEPORT, ILLINOIS, U.S.A.
A DIVISION OF HONEYWELL

FED. MFG. CODE 91929

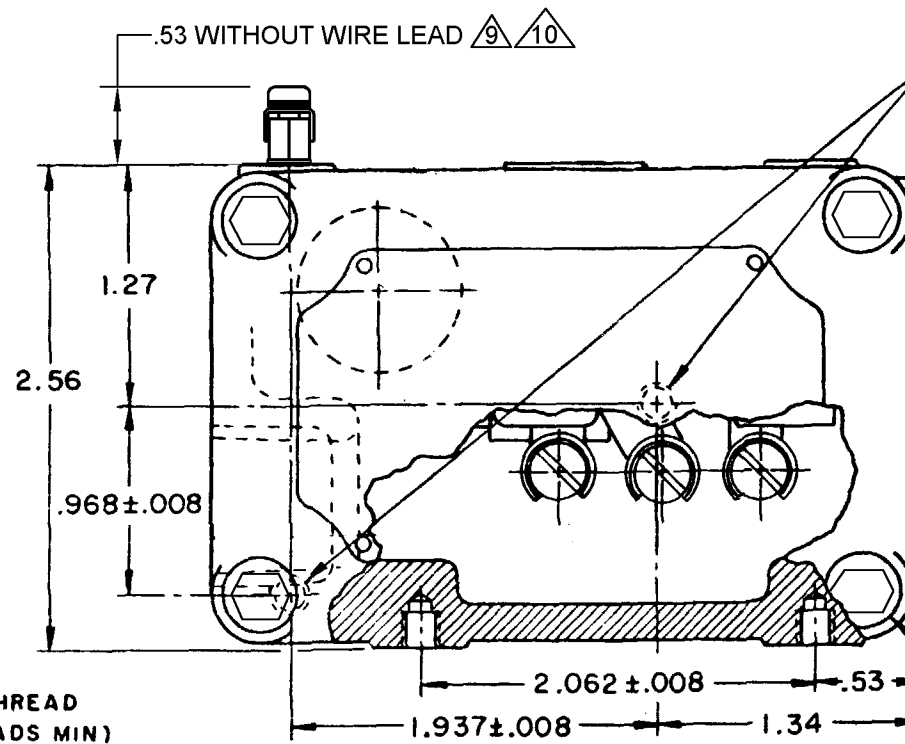
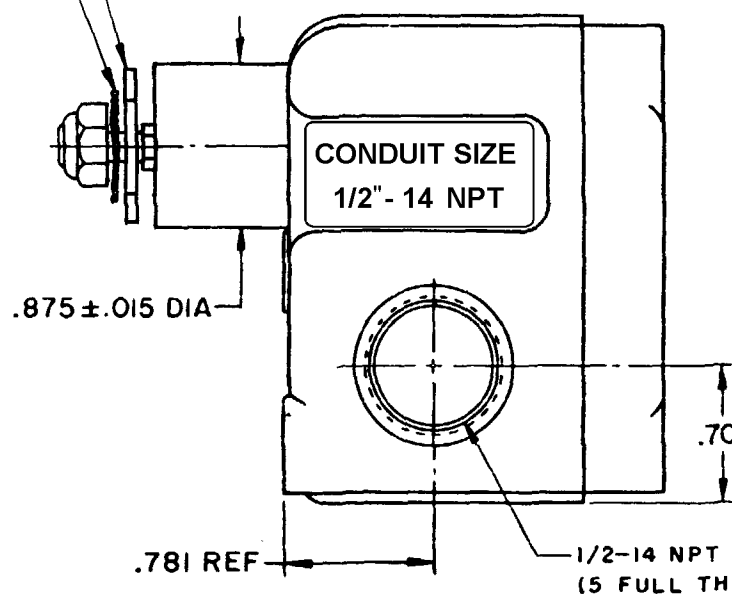
SWITCH - ENCLOSED

CATALOG LISTING
EX-AR1621

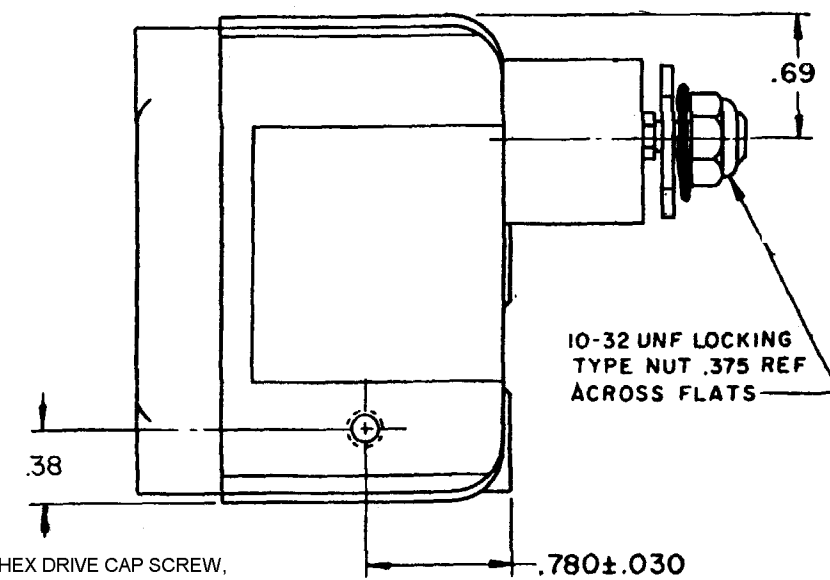
THIS DRAWING COVERS A PROPRIETARY ITEM AND IS THE PROPERTY OF MICRO SWITCH, A DIVISION OF HONEYWELL. THIS DRAWING IS NOT TO BE COPIED OR USED WITHOUT THE APPROVAL OF MICRO SWITCH.



LOCKWASHER
CORROSION RESISTANT STEEL, HEX. WASHER
.750 REF ACROSS FLATS X .094 THICK



MOUNTING HOLE IN
OPPOSITE WALL (2)



CHARACTERISTICS

OPERATING TORQUE — 4 IN OZ MAX

PRETRAVEL } 4 5 6
OVERTRAVEL }

SWITCH BASIC REPLACEMENT-BZ-2RW88-P5

ELECTRICAL DATA

CONTACT ARRANGEMENT
S P D T

15A-125, 250 OR 480 VAC
1/8HP-125 VAC; 1/4HP-250 VAC
1/2A-125 VDC; 1/4A-250 VDC



SCALE FULL

DO NOT SCALE PRINT

UNLESS OTHERWISE
NOTED

DIMENSIONS ARE IN INCHES

TOLERANCES ARE:

ONE PLACE (.0) ± .030
TWO PLACE (.00) ± .015
THREE PLACE (.000) ± .005
ANGLES ±

WEIGHT

NOTE—

- EXPLOSION PROOF—UNDERWRITERS LAB. INC. LISTED FOR HAZARDOUS LOCATIONS NEMA 7, CLASS I, GROUP C AND D, NEMA 9, CLASS II, GROUP E, F AND G
- (6) MOUNTING SCREW HOLES, 10-32 NF-2B THREADS X .219 REF DEEP
- 8-32 NC X .219 REF TERMINAL SCREWS AND CUP WASHERS
- UNIT PROVIDES NO RESTORING FORCE, THE ACTUATING DEVICE MUST CONTROL MOVEMENT OF THE SHAFT
- CIRCUIT IS MADE THROUGH THE NORMALLY CLOSED CONTACT FOR APPROXIMATE 90° ROTATION OF THE SHAFT AND THROUGH THE NORMALLY OPEN CONTACT FOR APPROXIMATE 270° ROTATION
- SHAFT ROTATION IS NOT RESTRICTED IN EITHER DIRECTION
- EUROPEAN HAZARDOUS LOCATIONS DESIGNATION: Ex d IIB + H2 T6 CATAGORY II 2 G
- SEAL RATING: NEMA 1
- EXTERNAL GROUND SCREW MAY BE ASSEMBLED TO ANY UNUSED MOUNTING SCREW HOLE
- ASSEMBLE PROVIDED SPLIT LOCKWASHER BETWEEN GROUND LUG AND HOUSING