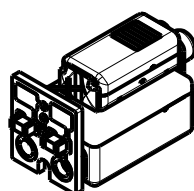
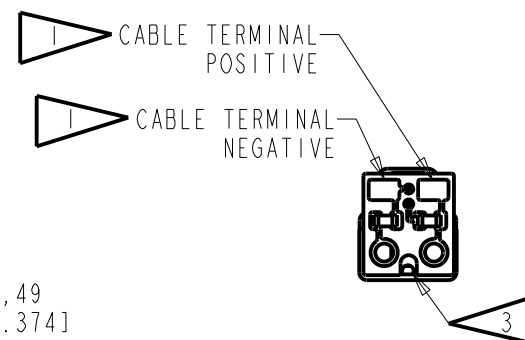
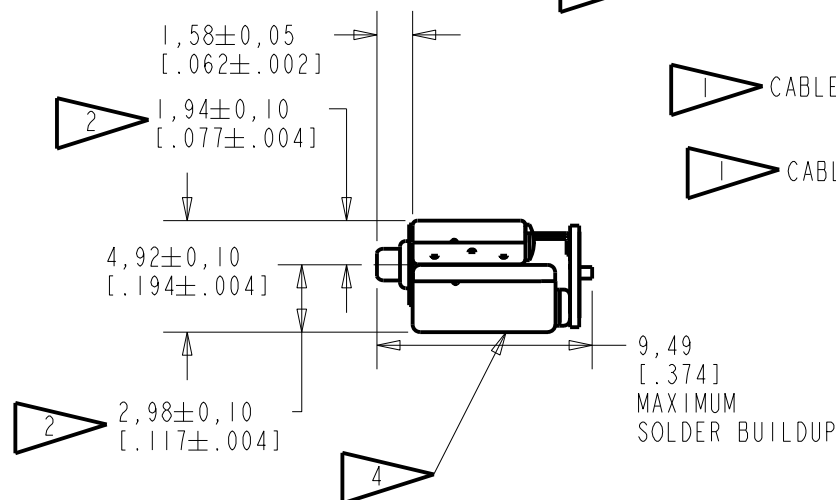
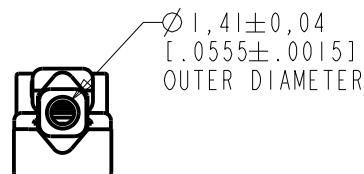
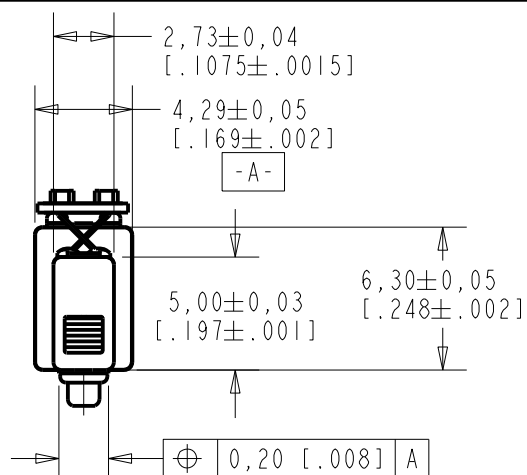


**G0-30783-000**

**SHT 1.1**

**NOTES:**

- 1 A POSITIVE GOING VOLTAGE AT THE POSITIVE TERMINAL RELATIVE TO THE NEGATIVE TERMINAL CAUSES A DECREASE IN PRESSURE AT THE SOUND OUTLET.
- 2 LOCATED FROM TWO SURFACES FOR CUSTOMER CONVENIENCE. ONLY APPLICABLE FROM ONE SURFACE, NOT TO BE USED TOGETHER.
- 3 BACK VENT HOLE TO BE CLEAN AND CLEAR OF DEBRIS.
- 4 LASER MARK ON OUTSIDE OF ED CUP.



DIMENSIONS IN MILLIMETERS [INCHES]

**KNOWLES ELECTRONICS**  
ITASCA, ILLINOIS U.S.A.

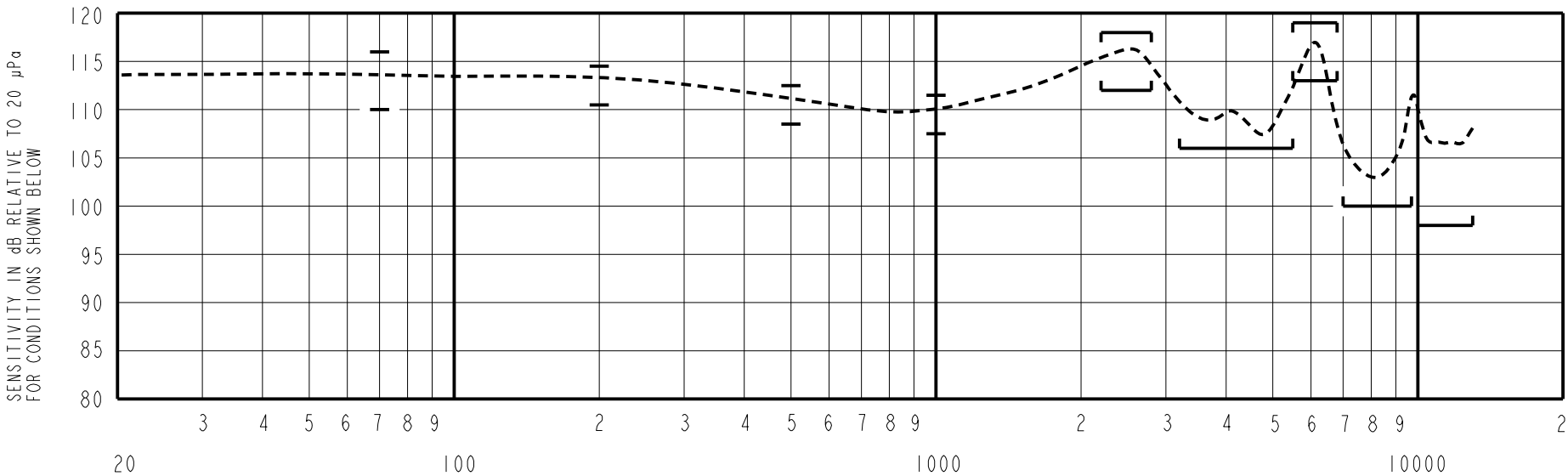
Revision	C.O. #	Implementation Date	RELEASE LEVEL	REVISION
C	C10112167	2-18-11	<b>Active</b>	<b>C</b>
B	C10110464	9-29-09		
A	C10110064	7-28-09		
SCALE: 3:1			DR. BY	DATE
DO NOT SCALE DRAWING			MMM	7-28-09
TITLE: RECEIVER			CK. BY	DATE
OUTLINE DRAWING			GJP	7-30-09
G0-30783-000			APP. BY	DATE
SHT 1.1			GJP	7-30-09

UNDAMPED MAGNETIC BALANCED ARMATURE RECEIVERS INTENDED FOR USE AS THE HIGH AND LOW FREQUENCY DRIVERS IN A Hi Fi SYSTEM. THE GO RECEIVER COMBINES A WBFK AND ED RECEIVERS COUPLED THROUGH A CIRCUIT TO PROVIDE THE RESPONSE SHAPE.

NO DAMPING

CO-30783-000  
SHEET 2.1

CONSTANT VOLTAGE DRIVE CONDITIONS  
TESTED WITH VENT UNSEALED



TEST CONDITIONS

NOMINAL SOURCE VOLTAGE	0.101 V rms, 0 V DC BIAS
SOURCE IMPEDANCE	<1 Ohm
TUBING	7 X 2 mm + 0.188cc CAVITY
COUPLER CAVITY	IEC 60318-4 ("711")
TEST STATION	FCART

TABLE 1

ACOUSTICAL

SENSITIVITY  
DEVICE WILL PRODUCE THE SPL LISTED BELOW UNDER TEST CONDITIONS IN TABLE 1. NOMINAL SENSITIVITY AT 1kHz IS dB RELATIVE TO 20 µPa. ALL OTHER VALUES IN dB RELATIVE TO THE SENSITIVITY AT 1kHz.

FREQUENCY (Hz)	MINIMUM	NOMINAL	MAXIMUM
70	+0.5	+3.5	+6.5
200	+1.0	+3.0	+5.0
500	-1.0	+1.0	+3.0
1000	-2.0	109.5	+2.0
2200 - 2800	+2.5	+6.0	+8.5
3200 - 5500	-3.5	---	---
5500 - 6800	+3.5	+6.5	+9.5
7000 - 9700	-9.5	---	---
10000 - 13000	-11.5	---	---

TABLE 2

TOTAL HARMONIC DISTORTION  
DEVICE WILL NOT EXCEED TOTAL HARMONIC DISTORTION LEVELS LISTED BELOW.

FREQUENCY (Hz)	AC DRIVE (V rms)	DC BIAS (mA)	LIMIT (%)
500	0.202	0	8
830	0.101	0	5
1250	0.101	0	5

TABLE 3

ELECTRICAL

DC RESISTANCE	12.5 Ohms ± 10%
IMPEDANCE @ 500 Hz	21.5 Ohms ± 15%
IMPEDANCE @ 1kHz	37 Ohms ± 15%

TABLE 4

ISOLATION: CASE WILL BE ELECTRICALLY ISOLATED FROM THE COIL CIRCUIT.

MECHANICAL

PORT LOCATION: 12S  
SOLDER TYPE: SAC305 (LEAD FREE)

TEMPERATURE:  
OPERATING: SENSITIVITY AT 1K Hz WILL NOT VARY MORE THAN +1/-3 dB FROM 17°C TO 63°C.  
STORAGE: -40°C TO 63°C.

BUZZ TEST

LISTENING TEST CONDUCTED BETWEEN 20Hz TO 3kHz TO DETECT BUZZ.

INPUT DRIVE SIGNAL	0.18V
--------------------	-------

TABLE 5

KNOWLES ELECTRONICS  
ITASCA, ILLINOIS U.S.A.

Revision	C.O. #	Implementation Date	RELEASE LEVEL	REVISION
C	C10112167	2-18-11	Active	C
B	C10110464	9-29-09		
A	C10110064	7-28-09		
WHEN TEST LIMITS ARE USED TO ESTABLISH INCOMING INSPECTION ACCEPTANCE/REJECTION CRITERIA, CORRELATION OF TEST EQUIPMENT WITH KNOWLES IS ALSO REQUIRED FOR ELIMINATION OF EQUIPMENT AND TEST METHOD VARIATION			DR. BY MMM	DATE 7-28-09
TITLE: RECEIVER			CK. BY GJP	DATE 7-30-09
PERFORMANCE SPECIFICATION			APP. BY GJP	DATE 7-30-09
			CO-30783-000 SHT 2.1	