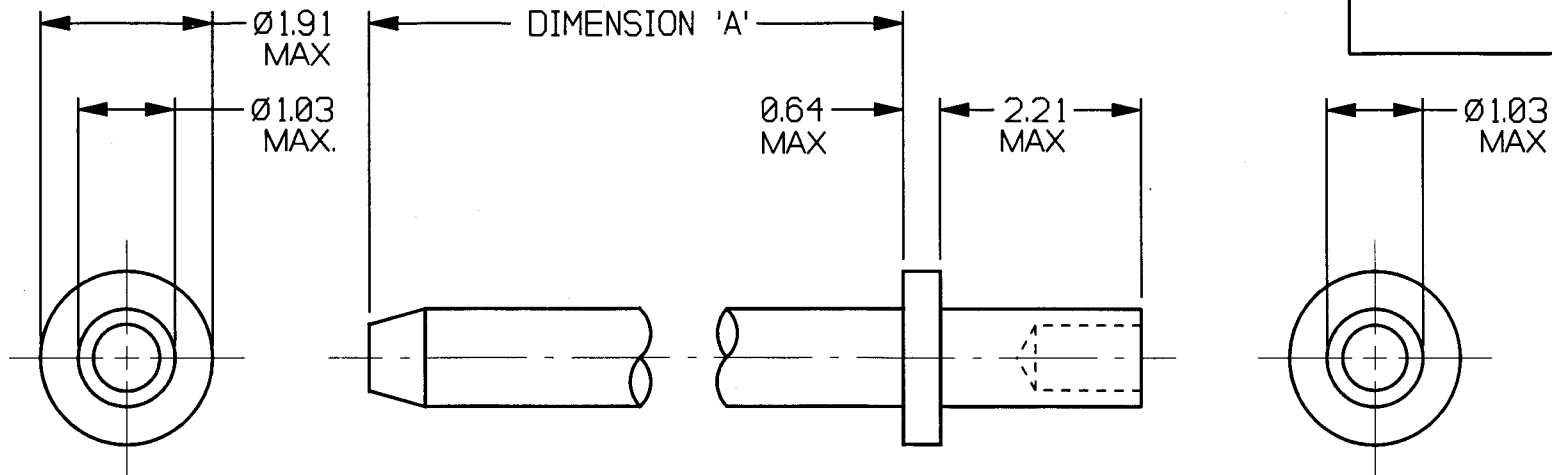


CUSTOMER INFORMATION
SHEET

HARWIN PART No.	DIMENSION 'A' (MAX)
H2170-XX	12.83
H2171-XX	19.18
H2172-XX	25.53
H2173-XX	7.75
H2174-XX	3.94
H2176-XX	9.15
H2177-XX	6.61
H2179-XX	7.72

NOTE:

1. PLATING FINISHES AVAILABLE:

 $\varnothing 1$ = TIN $\varnothing 5$ = GOLD2. RECOMMENDED MOUNTING HOLE: $\varnothing 1.04/\varnothing 1.14$

3. RECOMMENDED PANEL THICKNESS: 1.6mm

4. FOR SWAGING TOOL CHANGE PART No.

TO PREFIX 'Z' AND SUFFIX '00'

(EXAMPLE Z2174-00)

1	6.195	
ISS.	DATE	C/N
DRAWN: I.SANDY		
CHECKED: <i>[Signature]</i>		
APPD.: <i>[Signature]</i>		
CUSTOMER REF.		
ASSEMBLY DRG:		

HARWIN

TOLERANCES
 X. ± 1 mm
 X.X ± 0.25 mm
 X.XX ± 0.10 mm
 X.XXX ± 0.01 mm
 ANGLES $\pm 1^\circ$

MATERIAL:
BRASS

TITLE:

TERMINAL PIN

HARWIN PLC
 UK
 TEL: (01705) 370451
 FAX: (01705) 324010

HARWIN INC
 U.S.A.
 TEL: (812) 285-0055
 FAX: (812) 285-0056

HARWIN PTE
 SINGAPORE
 TEL: 7794909
 FAX: 7793868

IF IN DOUBT - ASK

S/AREA:

mm²

DRAWING NUMBER:

H217X-XX

SHT.
2
OF
2