





THE INFORMATION CONTAINED IN THIS DRAWING IS CONFIDENTIAL AND MAY NOT BE DISCLOSED WITHOUT WRITTEN CONSENT FROM SOURIAU USA, INC.

LINEAR MEASURE:			 (INCH)
THIRD ANGLE PROJECTION			
			
TOLERANCES UNLESS OTHERWISE SPECIFIED			
No. OF PLACES	mm [INCH]		
WHOLE	± 0.5 ($\pm .02$)		
ONE PLACE	± 0.2 ($\pm .008$)		
TWO PLACES	± 0.1 ($\pm .004$)		
ANGLES $\pm 1^\circ$			

DWG. NO.
JBXEA0G02FSSDSC

ELECTRICAL:

EMI SHIELDING : SHIELDED FOR THE RANGE
55dB UP TO 100MHZ

INSULATION RESISTANCE : >500M Ω PER ANSI-EIA-364-D METHOD 21

MAX. CURRENT RATING : (SEE TABLE 1)
MAXIMUM CURRENT THAT CAN BE APPLIED SIMULTANEOUSLY
ON EACH LINE OF THE CONNECTOR MATED PAIR, CONTINUOUSLY
DURING ITS LIFE TIME IN NORMAL CLIMATIC CONDITIONS.

CONNECTOR TESTING : 1400Vrms
VOLTAGE TEST VOLTAGE IS APPROXIMATELY 75% OF THE DWV
VOLTAGE AT NORMAL CLIMATIC CONDITIONS. THIS
VOLTAGE CAN BE ACHIEVED SEVERAL TIMES, BUT NOT
APPLIED CONTINUOUSLY.

CONNECTOR WORKING : 660/460 (Vdc/ Vrms)
VOLTAGE WORKING VOLTAGE IS APPROXIMATELY 1/3 OF THE
TEST VOLTAGE. THIS VOLTAGE IS SUSTAINABLE FOR
THE LIFE OF THE CONNECTOR IN ITS WORKING
ENVIRONMENT.

PHYSICAL:

MAXIMUM WIRE SIZE USED : 24 AWG

ENVIRONMENTAL:

ENDURANCE: 1000 CYCLES AS PER MIL-STD 1344A, METHOD 2016.1

SHOCK: 50 g , DURATION 6 ms; AS PER MIL-STD 1344A, METHOD 2004.1

VIBRATIONS: 10 TO 2000Hz $\gamma = 15g$, AS PER MIL-STD 1344A, METHOD 2005.1

PROTECTION INDEX: IP 40 AS PER CEI 529

OPERATING TEMPERATURE: -55°C TO +200°C (-67°F TO +392°F)

SOCKET CONTACT

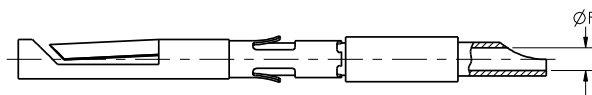


TABLE 1

TABLE 1						
CONTACT		USABLE CABLES			MAX. CURRENT RATING (A)	CONTACT RESISTANCE (mΩ)
ØC	ØF	CORE SECTION (mm ²)		AWG		
		MIN.	MAX.			
-	0.8	-	0.21	24	10	3.5

DRAWING TITLE

JBX, SIZE 0, 2 POSITION EA RECEPTACLE

CAT NO.

JBXEA0G02FSSDS

CAGE NO: 09922

SIZE: C

CUSTOMER

INTERPRET THIS DRAWING IN ACCORDANCE
WITH ASME Y14.5M - 1994.



SOURIAU
Connection Technologies

www.souriau.com

APPROVAL	DRAWN: SNL	12-23-10
	CHKD : TW	12-23-10
	DSGN : XXX	mm-dd-yy
	MFG : DH	12-23-10
	QC : DK	12-23-10

DRAWING SCALE: 8:1	
DRAWING NO.	RE

DRAWING NO.	RE
-------------	----

JBXEA0G02FSSDSC	A
-----------------	---

2 OF 2

PRO-E

D

C

B

A