

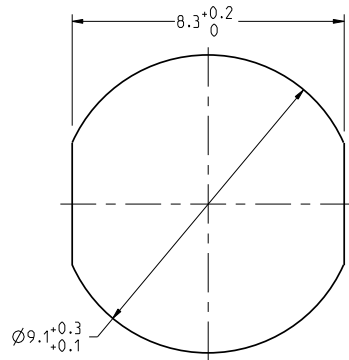
THIS DRAWING IS A CONTROLLED DOCUMENT FOR SOURIAU USA, INC.  
CONTACT THE DOCUMENT CONTROL CENTER FOR THE LATEST REVISION.

C

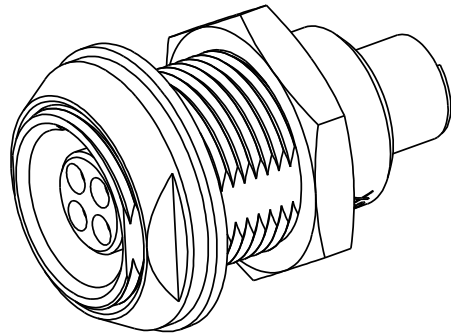
B

THE INFORMATION CONTAINED IN THIS DRAWING IS CONFIDENTIAL AND MAY NOT BE  
DISCLOSED WITHOUT WRITTEN CONSENT FROM SOURIAU USA, INC.

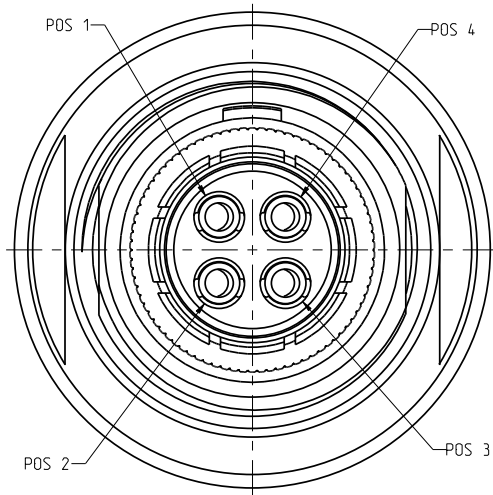
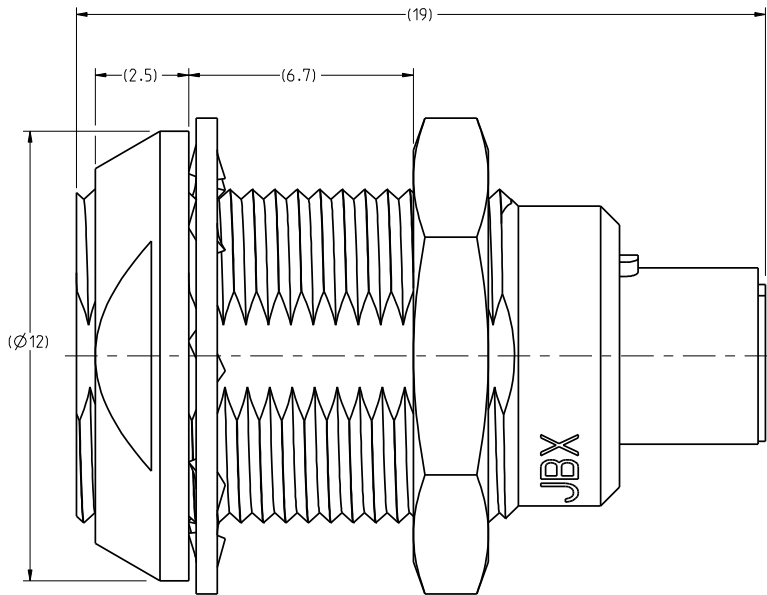
DWG. NO.  
**JBXEA0G04FCSDSC**



RECOMMENDED  
PANEL CUTOUT



SCALE 5:1



MATING SIDE VIEW

NOTES:

MATERIAL:

OUTER SHELL & PANEL NUT :  
SHIELDING RING :  
NUT : } BRASS CuZn40Pb3 (C38500/C36000)

SOCKET CONTACT (CRIMP) : CUPRO-NICKEL CuNi1Pb1P (CDAC 19150)

CLIP : BERYLLIUM COPPER CuBe1.9 (C17200/C36000)

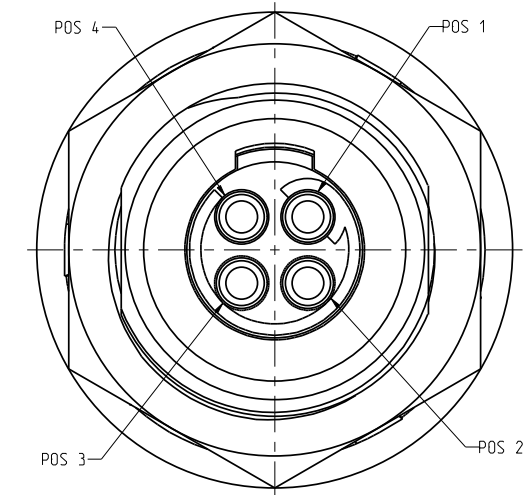
INSULATOR : PEEK WITH 15% GLASS FILLED, COLOR BROWN

FINISH:

OUTER SHELL : CHROME OVER NICKEL UNDERCOAT

OTHER BRASS PARTS  
EXCEPT SOCKET CONTACTS : NICKEL

SOCKET CONTACTS : GOLD AS PER MIL-G-45204C TYPE 1, CLASS 00.



WIRE SIDE VIEW

A	RELEASED PER ECN 11353	SSF 01-26-11	SDH 01-26-11
REV	DESCRIPTION	BY DATE	CHKD DATE

DRAWING TITLE

**JBX, SIZE 0, 4 POSITION EA RECEPTACLE**

CAT NO.

**JBXEA0G04FCSDS**

CAGE NO: 09922

SIZE: C

**CUSTOMER**

**SOURIAU**  
Connection Technology

www.souriau.com

INTERPRET THIS DRAWING IN ACCORDANCE  
WITH ASME Y14.5M - 1994.

DRAWN: SNL	12-23-10
CHKD : TW	12-23-10
DSGN : XXX	mm-dd-yy
MFG : DH	12-23-10
QC : DK	12-23-10

DRAWING SCALE: 8:1

DRAWING NO. REV

**JBXEA0G04FCSDSC** A

1 OF 2

PRO-E

THE INFORMATION CONTAINED IN THIS DRAWING IS CONFIDENTIAL AND MAY NOT BE DISCLOSED WITHOUT WRITTEN CONSENT FROM SOURIAU USA, INC.

DWG. NO.  
**JBXEA0G04FCSDSC**

ELECTRICAL:

EMI SHIELDING :	SHIELDED FOR THE RANGE 55dB UP TO 100MHz
INSULATION RESISTANCE :	>500MΩ PER ANSI-EIA-364-D METHOD 21
MAX. CURRENT RATING :	(SEE TABLE 1) MAXIMUM CURRENT THAT CAN BE APPLIED SIMULTANEOUSLY ON EACH LINE OF THE CONNECTOR MATED PAIR, CONTINUOUSLY DURING ITS LIFE TIME IN NORMAL CLIMATIC CONDITIONS.
CONNECTOR TESTING : VOLTAGE	1400Vrms TEST VOLTAGE IS APPROXIMATELY 75% OF THE DWV VOLTAGE AT NORMAL CLIMATIC CONDITIONS. THIS VOLTAGE CAN BE ACHIEVED SEVERAL TIMES, BUT NOT APPLIED CONTINUOUSLY.
CONNECTOR WORKING : VOLTAGE	660/460 (Vdc/ Vrms) WORKING VOLTAGE IS APPROXIMATELY 1/3 OF THE TEST VOLTAGE. THIS VOLTAGE IS SUSTAINABLE FOR THE LIFE OF THE CONNECTOR IN ITS WORKING ENVIRONMENT.

MAXIMUM WIRE SIZE USED FOR CRIMPING : 22 AWG

ENDURANCE:	500 CYCLES AS PER MIL-STD 1344A, METHOD 2016.1
SHOCK:	50 g, DURATION 6 ms; AS PER MIL-STD 1344A, METHOD 2004.1
VIBRATIONS:	10 TO 2000Hz $\gamma$ = 15g, AS PER MIL-STD 1344A, METHOD 2005.1
PROTECTION INDEX:	IP 40 AS PER CEI 529
OPERATING TEMPERATURE:	-55°C TO +200°C (-67°F TO +392°F)

SOCKET CONTACT

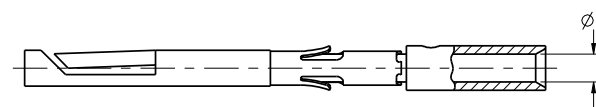


TABLE 1

TABLE 1						
CONTACT		USABLE CABLES			MAX. CURRENT RATING (A)	CONTACT RESISTANCE (mΩ)
ØC	ØF	CORE SECTION (mm <sup>2</sup> )		AWG		
		MIN.	MAX.			
-	0.85	0.129	0.326	22-24-26	7	5

DRAWING TITLE	
JBX, SIZE 0, 4	POSITION EA RECEPTACLE

CAT NO.	JBXEA0G04FCSDS
---------	----------------

CAGE NO: 09922	SIZE: C
----------------	---------

**CUSTOMER**

INTERPRET THIS DRAWING IN ACCORDANCE  
WITH ASME Y14.5M - 1994.



**www.souriau.com**

APPROVAL	DRAWN: SNL	12-23-10
	CHKD : TW	12-23-10
	DSGN : XXX	mm-dd-yy
	MFG : DH	12-23-10
	QC : DK	12-23-10
DRAWING SCALE: 8:1		
DRAWING NO.		REV
JBXEA0G04FCSDSC		A
2 OF 2		

2 OF 2

**PRO-E**