

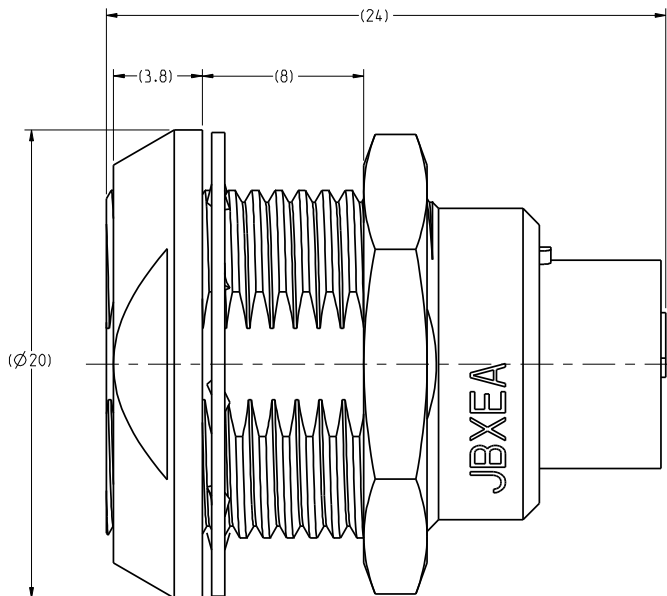
THE INFORMATION CONTAINED IN THIS DRAWING IS CONFIDENTIAL AND MAY NOT BE DISCLOSED WITHOUT WRITTEN CONSENT FROM SOURIAU USA, INC.

MATING SIDE VIEW

POS 1

POS 2

This diagram shows the mating side view of the assembly. It features a central circular component with two vertical slots, labeled POS 1 and POS 2. The component is surrounded by a series of concentric rings, including a gear-like ring with teeth. The entire assembly is enclosed within a large circular frame.





WIRE SIDE VIEW

POS 1

POS 2

This diagram shows a wire side view of a circular component. It features several concentric circles. A central feature consists of two circular elements stacked vertically, connected by a narrow vertical line. A horizontal dashed line passes through the center of the component. Two labels with leader lines point to specific locations: 'POS 1' points to the top edge of the outermost circle, and 'POS 2' points to the bottom edge of the innermost circle.

		A	RELEASED PER ECN 11353	SSF 01-26-11	SDH 01-26-11	
		REV	DESCRIPTION	BY DATE	CHKD DATE	
DRAWING TITLE						
JBX, SIZE 2, 2 POSITION, EA RECEPTACLE						
CAT NO.						
JBXE A2G02FCSDS						
CAGE NO: 09922		SIZE: C				
CUSTOMER		 SOURIAU Connection Technology		APPROVAL	DRAWN: RKO	12-30-10
					CHKD : TW	12-30-10
					DSGN : XXX	mm-dd-yy
					MFG : DH	12-30-10
					QC : DK	12-30-10
INTERPRET THIS DRAWING IN ACCORDANCE WITH ASME Y14.5M - 1994.		 SOURIAU Connection Technology		www.souriau.com	DRAWING SCALE: S:1	
					DRAWING NO.	
					JBXE A2G02FCSDSC	
					A	
					1 OF 2	

DWG. NO.
JBXEA2G02FCSDSC

ELECTRICAL:

EMI SHIELDING :	SHIELDED FOR THE RANGE 55dB UP TO 100MHz
INSULATION RESISTANCE :	>500M Ω PER ANSI-EIA-364-D METHOD 21
MAX. CURRENT RATING :	(SEE TABLE 1) MAXIMUM CURRENT THAT CAN BE APPLIED SIMULTANEOUSLY ON EACH LINE OF THE CONNECTOR MATED PAIR, CONTINUOUSLY DURING ITS LIFE TIME IN NORMAL CLIMATIC CONDITIONS.
CONNECTOR TESTING : VOLTAGE	2100 Vrms TEST VOLTAGE IS APPROXIMATELY 75% OF THE DWV VOLTAGE AT NORMAL CLIMATIC CONDITIONS. THIS VOLTAGE CAN BE ACHIEVED SEVERAL TIMES, BUT NOT APPLIED CONTINUOUSLY.
CONNECTOR WORKING : VOLTAGE	1000/700 (Vdc/ Vrms) WORKING VOLTAGE IS APPROXIMATELY 1/3 OF THE TEST VOLTAGE. THIS VOLTAGE IS SUSTAINABLE FOR THE LIFE OF THE CONNECTOR IN ITS WORKING ENVIRONMENT.

PHYSICAL:
MAXIMUM WIRE SIZE USED FOR CRIMPING : 12 AWG

ENVIRONMENTAL:

ENDURANCE:	1000 CYCLES AS PER MIL-STD 1344A, METHOD 2016.1
SHOCK:	100 g , DURATION 6 ms: AS PER MIL-STD 1344A, METHOD 2004.1
VIBRATIONS:	10 TO 2000Hz γ = 20 g, AS PER MIL-STD 1344A, METHOD 2005.1
PROTECTION INDEX:	IP 40 AS PER CEI 529
OPERATING TEMPERATURE:	-55°C TO +200°C (-67°F TO +392°F)

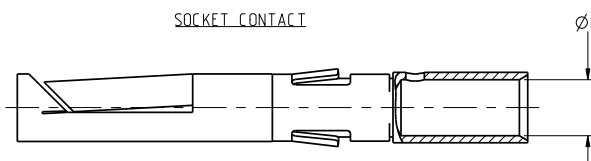


TABLE 1

CONTACT		USABLE CABLES			MAX. CURRENT RATING (A)	CONTACT RESISTANCE (m Ω)
$\varnothing C$	$\varnothing F$	CORE SECTION (mm ²)		AWG		
		MIN.	MAX.			
-	2.4	1.309	3.309	12-14-16	30	2.5

THE INFORMATION CONTAINED IN THIS DRAWING IS CONFIDENTIAL AND MAY NOT BE DISCLOSED WITHOUT WRITTEN CONSENT FROM SOURIAU USA, INC.

DRAWING TITLE

JBX, SIZE 2, 2 POSITION, EA RECEPTACLE

CAT NO.

CAGE NO: 09922

CUSTOMER



www.souriau.com

APPROVAL	DRAWN: RKO	12-30-16
	CHKD : TW	12-30-16
	DSGN : XXX	mm-dd-yyyy
	MFG : DH	12-30-16
	QC : DK	12-30-16

DRAWING SCALE: 5:1	
DRAWING NO.	RE

JBXEA2G02FCSDSC A

2 OF 2

PRO-E