

THE INFORMATION CONTAINED IN THIS DRAWING IS CONFIDENTIAL AND MAY NOT BE DISCLOSED WITHOUT WRITTEN CONSENT FROM SOURIAU USA, INC.

POS 1

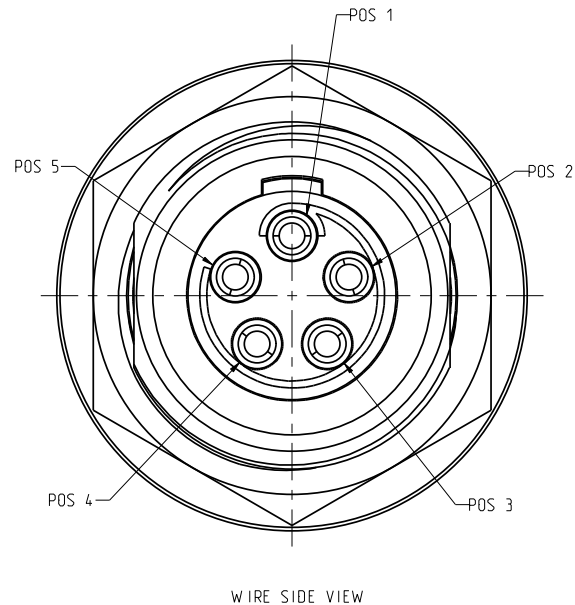
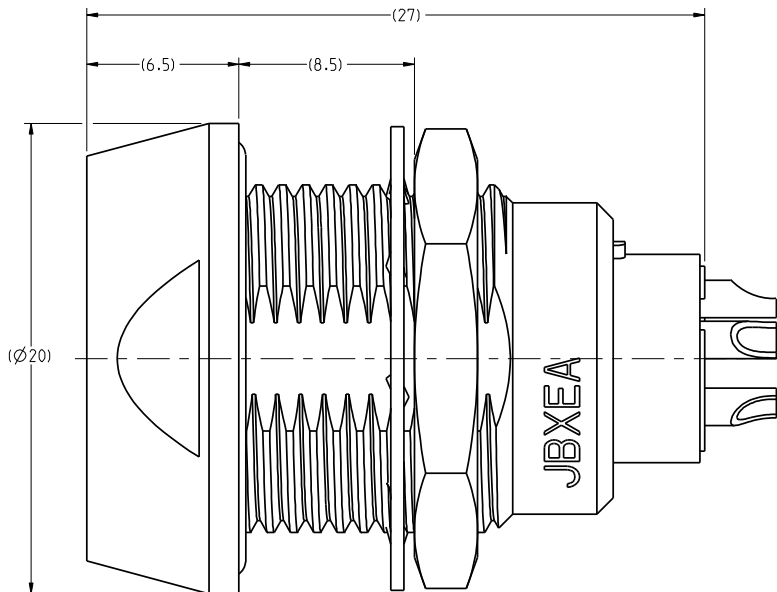
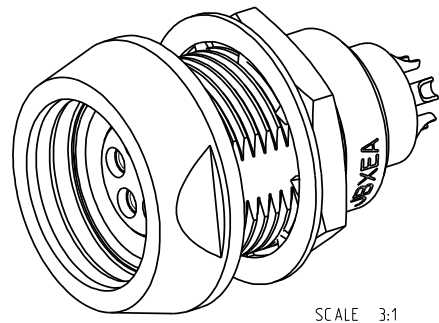
POS 2

POS 3

POS 4

POS 5

MATING SIDE VIEW



NOTES:

MATERIAL:

OUTER SHELL & PANEL NUT :	}	BRASS C <u>u</u> Zn40Pb3 (C38500/C36000)
SHIELDING RING :		
NUT :		

SOCKET CONTACT (SOLDER) : CUPRO-NICKEL CuNi1Pb1P (CDAC 19150)

CLIP: BERYLLIUM COPPER CuBe1,9 (C17200/C36000)

INSULATOR : PEEK WITH 15% GLASS FILLED, COLOR BROWN

SEALS : NITRILE AND SILICON RUBBER

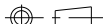

FINISH:

OUTER SHELL : CHROME OVER NICKEL UNDERCOAT

OTHER BRASS PARTS  
EXCEPT SOCKET CONTACTS : NICKEL

SOCKET CONTACTS : GOLD AS PER MIL-G-45204C TYPE 1, CLASS 00.

A		RELEASED PER ECN 11345		SSF 01-18-11		SDH 01-18-11	
REV		DESCRIPTION		BY DATE		CHKD DATE	

DRAWING TITLE																									
JBX, SIZE 2, 5 POSITION, EC RECEPTACLE																									
CAT NO.																									
JBXEC2G05FSSDS																									
CAGE NO: 09922				SIZE: C																					
<div>THIRD ANGLE PROJECTION</div> <div></div> <div>TOLERANCES UNLESS OTHERWISE SPECIFIED</div> <div>No. OF PLACES    mm [INCH]</div> <div>WHOLE No.       ±0.5 (±.02)</div> <div>ONE PLACE       ±0.2 (±.008)</div> <div>TWO PLACES      ±0.1 (±.004)</div> <div>ANGLES ±1°</div>				<div></div> <div>SOURIAU Connection Technology</div> <div>www.souriau.com</div>																					
INTERPRET THIS DRAWING IN ACCORDANCE WITH ASME Y14.5M - 1994.				<div>APPROVAL</div> <table><tr><td>DRAWN: SNL</td><td>01-01-11</td></tr><tr><td>CHKD : TW</td><td>01-01-11</td></tr><tr><td>DSGN : XXX</td><td>mm-dd-yy</td></tr><tr><td>MFG : DH</td><td>01-01-11</td></tr><tr><td>QC : DK</td><td>01-01-11</td></tr><tr><td colspan="2">DRAWING SCALE: 5:1</td></tr><tr><td colspan="2">DRAWING NO.    REV</td></tr><tr><td>JBXEC2G05FSSDSC</td><td>A</td></tr><tr><td colspan="2">1 OF 2</td></tr></table>				DRAWN: SNL	01-01-11	CHKD : TW	01-01-11	DSGN : XXX	mm-dd-yy	MFG : DH	01-01-11	QC : DK	01-01-11	DRAWING SCALE: 5:1		DRAWING NO.    REV		JBXEC2G05FSSDSC	A	1 OF 2	
DRAWN: SNL	01-01-11																								
CHKD : TW	01-01-11																								
DSGN : XXX	mm-dd-yy																								
MFG : DH	01-01-11																								
QC : DK	01-01-11																								
DRAWING SCALE: 5:1																									
DRAWING NO.    REV																									
JBXEC2G05FSSDSC	A																								
1 OF 2																									

2	1	PRO-E
---	---	-------

4

3

2

1

DWG. NO.  
JBXEC2G05FSSDSC

ELECTRICAL:

EMI SHIELDING :  
SHIELDED FOR THE RANGE  
55dB UP TO 100MHz

INSULATION RESISTANCE :  
>500MΩ PER ANSI-EIA-364-D METHOD 21

MAX. CURRENT RATING :  
(SEE TABLE 1)  
MAXIMUM CURRENT THAT CAN BE APPLIED SIMULTANEOUSLY  
ON EACH LINE OF THE CONNECTOR MATED PAIR, CONTINUOUSLY  
DURING ITS LIFE TIME IN NORMAL CLIMATIC CONDITIONS.

CONNECTOR TESTING :  
VOLTAGE  
1900Vrms  
TEST VOLTAGE IS APPROXIMATELY 75% OF THE DWV  
VOLTAGE AT NORMAL CLIMATIC CONDITIONS. THIS  
VOLTAGE CAN BE ACHIEVED SEVERAL TIMES, BUT NOT  
APPLIED CONTINUOUSLY.

CONNECTOR WORKING :  
VOLTAGE  
900/630 (Vdc/ Vrms)  
WORKING VOLTAGE IS APPROXIMATELY 1/3 OF THE  
TEST VOLTAGE. THIS VOLTAGE IS SUSTAINABLE FOR  
THE LIFE OF THE CONNECTOR IN ITS WORKING  
ENVIRONMENT.

PHYSICAL:

MAXIMUM WIRE SIZE USED : 20 AWG

ENVIRONMENTAL:

ENDURANCE: 1000 CYCLES AS PER MIL-STD 1344A, METHOD 2016.1

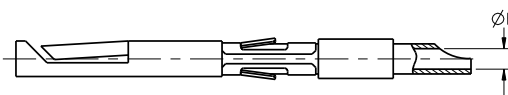
SHOCK: 100 g , DURATION 6 ms; AS PER MIL-STD 1344A, METHOD 2004.1

VIBRATIONS: 10 TO 2000Hz  $\gamma$  = 20g, AS PER MIL-STD 1344A, METHOD 2005.1

PROTECTION INDEX: IP 67 AS PER CEI 529

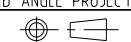
OPERATING TEMPERATURE: -40°C TO +80°C (-40°F TO +176°F)

SOCKET CONTACT



CONTACT		USABLE CABLES		AWG	MAX. CURRENT RATING (A)	CONTACT RESISTANCE (mΩ)
ØC	ØF	CORE SECTION (mm <sup>2</sup> )				
		MIN.	MAX.			
-	1.1	-	0.60	20	15	3

LINEAR  
MEASURE:  
THIRD ANGLE PROJECTION



TOLERANCES  
UNLESS OTHERWISE SPECIFIED:  
No. OF PLACES mm (INCH)  
WHOLE No. ±0.5 (±.02)  
ONE PLACE ±0.2 (±.008)  
TWO PLACES ±0.1 (±.004)  
ANGLES±1°

DRAWING TITLE  
JBX, SIZE 2, 5 POSITION, EC RECEPTACLE


CAT NO.  
JBXEC2G05FSSDS

CAGE NO: 09922

SIZE: C

CUSTOMER

INTERPRET THIS DRAWING IN ACCORDANCE  
WITH ASME Y14.5M - 1994.

  
www.souriau.com

APPROVAL  
DRAWN: SNL 01-01-11  
CHKD : TW 01-01-11  
DSGN : XXX mm-dd-yy  
MFG : DH 01-01-11  
QC : DK 01-01-11  
DRAWING SCALE: 5:1  
DRAWING NO. REV  
JBXEC2G05FSSDSC A  
2 OF 2

PRO-E

THIS DRAWING IS A CONTROLLED DOCUMENT FOR SOURIAU USA, INC.  
IT IS THE USER'S RESPONSIBILITY TO CONTACT THE DOCUMENT CENTER FOR THE LATEST REVISION.

C

B

THE INFORMATION CONTAINED IN THIS DRAWING IS CONFIDENTIAL AND MAY NOT BE  
DISCLOSED WITHOUT WRITTEN CONSENT FROM SOURIAU USA, INC.

A

4

3

2

1

D

C

B

A