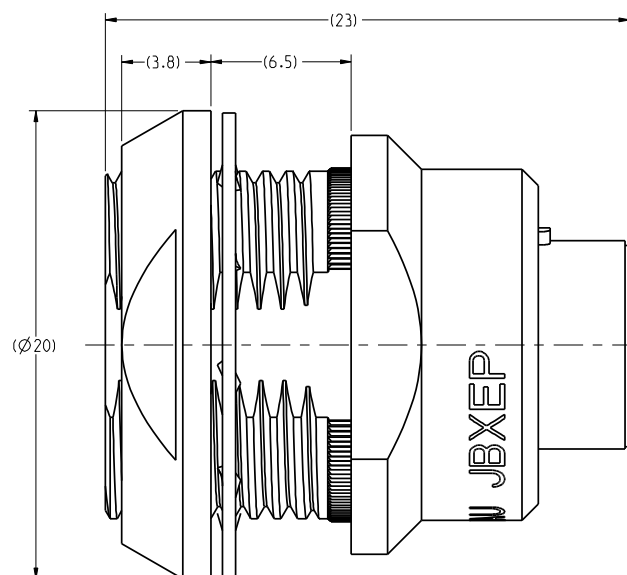
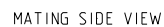


THE INFORMATION CONTAINED IN THIS DRAWING IS CONFIDENTIAL AND MAY NOT BE DISCLOSED WITHOUT WRITTEN CONSENT FROM SOURIAU USA, INC.

RECOMMENDED
PANEL CUTOUT



SOCKET CONTACTS : GOLD AS PER MIL-G-45204C TYPE 1,CLASS 00.

1 OF 2

INTERPRET THIS DRAWING IN ACCORDANCE
WITH ASME Y14.5M - 1994.

PRO-E

4

3

2

1

DWG. NO.
JBXEP2G19FCSDSC

ELECTRICAL:

EMI SHIELDING :
SHIELDED FOR THE RANGE
55dB UP TO 100MHz

INSULATION RESISTANCE :
>500MΩ PER ANSI-EIA-364-D METHOD 21

MAX. CURRENT RATING :
(SEE TABLE 1)
MAXIMUM CURRENT THAT CAN BE APPLIED SIMULTANEOUSLY
ON EACH LINE OF THE CONNECTOR MATED PAIR, CONTINUOUSLY
DURING ITS LIFE TIME IN NORMAL CLIMATIC CONDITIONS.

CONNECTOR TESTING :
VOLTAGE
1400 Vrms
TEST VOLTAGE IS APPROXIMATELY 75% OF THE DWV
VOLTAGE AT NORMAL CLIMATIC CONDITIONS. THIS
VOLTAGE CAN BE ACHIEVED SEVERAL TIMES, BUT NOT
APPLIED CONTINUOUSLY.

CONNECTOR WORKING :
VOLTAGE
660/460 (Vdc/ Vrms)
WORKING VOLTAGE IS APPROXIMATELY 1/3 OF THE
TEST VOLTAGE. THIS VOLTAGE IS SUSTAINABLE FOR
THE LIFE OF THE CONNECTOR IN ITS WORKING
ENVIRONMENT.

PHYSICAL:

MAXIMUM WIRE SIZE USED FOR CRIMPING : 22 AWG

ENVIRONMENTAL:

ENDURANCE:
500 CYCLES AS PER MIL-STD 1344A. METHOD 2016.1

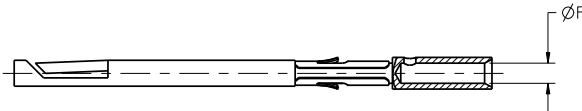
SHOCK:
50 g . DURATION 6 ms; AS PER MIL-STD 1344A. METHOD 2004.1

VIBRATIONS:
10 TO 2000Hz **γ** = 15 g, AS PER MIL-STD 1344A. METHOD 2005.1

PROTECTION INDEX:
IP 40 AS PER CEI 529

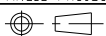
OPERATING TEMPERATURE:
-55°C TO +200°C (-67°F TO +392°F)

SOCKET CONTACT



| TABLE 1 | | | | | | |
|---------|------|---------------------------------|-------|----------|-------------------------------|-------------------------------|
| CONTACT | | USABLE CABLES | | | MAX. CURRENT RATING (A) | CONTACT RESISTANCE (mΩ) |
| ØC | ØF | CORE SECTION (mm ²) | | AWG | | |
| | | MIN. | MAX. | | | |
| - | 0.85 | 0.129 | 0.326 | 22-24-26 | 7 | 5 |

LINEAR
MEASURE:
THIRD ANGLE PROJECTION



TOLERANCES
UNLESS OTHERWISE SPECIFIED:
No. OF PLACESmm (INCH)
WHOLE No.±0.5 (±.02)
ONE PLACE±0.2 (±.008)
TWO PLACES±0.1 (±.004)
ANGLES±1°


DRAWING TITLE
JBX, SIZE 2, 19 POSITION, EP RECEPTACLE

CAT NO.
JBXEP2G19FCSDS

CAGE NO: 09922SIZE: C

CUSTOMER

INTERPRET THIS DRAWING IN ACCORDANCE
WITH ASME Y14.5M - 1994.


www.souriau.com

APPROVAL
DRAWN: RK001-13-11
CHKD : TW01-13-11
DSGN : XXXmm-dd-yy
MFG : DH01-13-11
QC : DK01-13-11
DRAWING SCALE: 5:1
DRAWING NO. REV
JBXEP2G19FCSDSCA
2 OF 2

4

3

2

1

PRO-E

THIS DRAWING IS A CONTROLLED DOCUMENT FOR SOURIAU USA, INC.
IT IS THE PROPERTY OF SOURIAU USA, INC. AND IS NOT TO BE
REPRODUCED OR TRANSMITTED IN ANY FORM OR BY ANY MEANS,
ELECTRONIC OR MECHANICAL, INCLUDING PHOTOCOPYING, RECORDING,
OR BY ANY INFORMATION STORAGE AND RETRIEVAL SYSTEM.
CONTACT THE DOCUMENT CONTROL CENTER FOR THE LATEST REVISION.

C

B

THE INFORMATION CONTAINED IN THIS DRAWING IS CONFIDENTIAL AND MAY NOT BE
DISCLOSED WITHOUT WRITTEN CONSENT FROM SOURIAU USA, INC.

D

C

B

A