

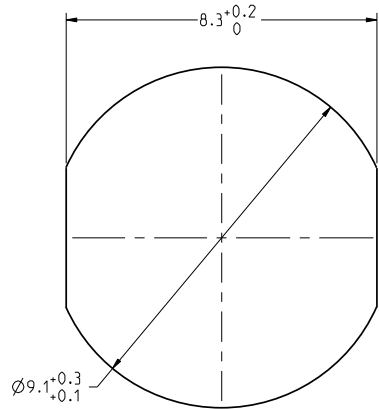
THIS DRAWING IS A CONTROLLED DOCUMENT FOR SOURIAU USA, INC.
CONTACT THE DOCUMENT CONTROL CENTER FOR THE LATEST REVISION.

C

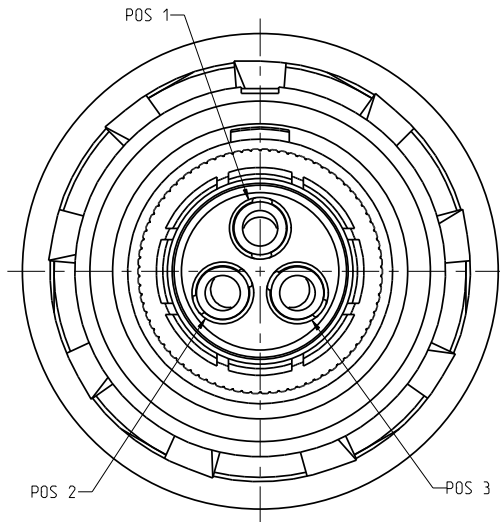
B

THE INFORMATION CONTAINED IN THIS DRAWING IS CONFIDENTIAL AND MAY NOT BE
DISCLOSED WITHOUT WRITTEN CONSENT FROM SOURIAU USA, INC.

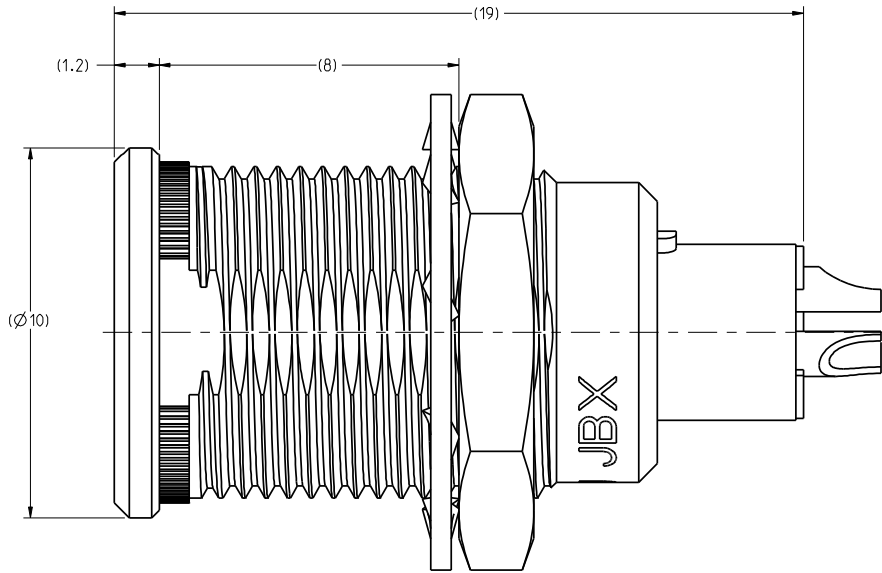
DWG. NO.
JBXEROG03FSSDSRC



RECOMMENDED
PANEL CUTOUT



WIRE SIDE VIEW



SCALE 5:1

NOTES:

1 RED DOT.

MATERIAL:

OUTER SHELL :
SHIELDING RING :
NUT : } BRASS CuZn40Pb3 (C38500/C36000)

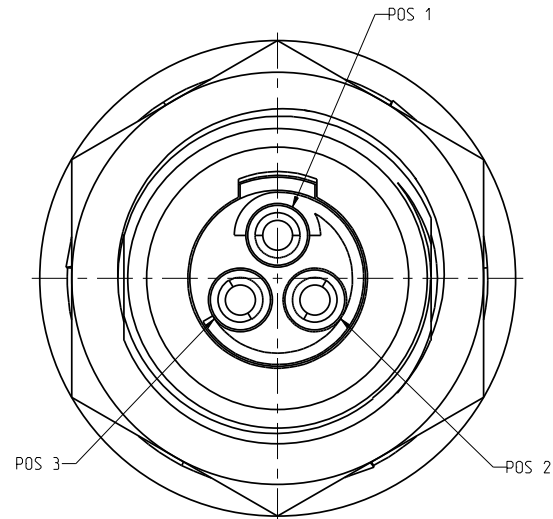
SOCKET CONTACT (SOLDER) : CUPRO-NICKEL CuNi1Pb1P (CDAC 19150)
INSULATOR : PEEK WITH 15% GLASS FILLED, COLOR BROWN

FINISH:

OUTER SHELL : CHROME OVER NICKEL UNDERCOAT

OTHER BRASS PARTS
EXCEPT SOCKET CONTACTS : NICKEL

SOCKET CONTACTS : GOLD AS PER MIL-G-45204C TYPE 1, CLASS 00.



MATING SIDE VIEW

A	RELEASED PER ECN 11345	SSF 01-18-11	SDH 01-18-11
REV	DESCRIPTION	BY DATE	CHKD DATE

DRAWING TITLE

JBX, SIZE 0, 3 POSITION, ER RECEPTACLE

CAT NO.

JBXEROG03FSSDSR

CAGE NO: 09922

SIZE: C

CUSTOMER

SOURIAU
Connection Technology

www.souriau.com

INTERPRET THIS DRAWING IN ACCORDANCE
WITH ASME Y14.5M - 1994.

DRAWN: SNL	01-07-11
CHKD : TW	01-07-11
DSGN : XXX	mm_dd_yy
IMFG : DH	01-07-11
QC : DK	01-07-11

DRAWING SCALE: 8:1

DRAWING NO. REV

JBXEROG03FSSDSRC A

1 OF 2

PRO-E

4

3

2

1

DWG. NO.
JBXEROG03FSSDSRC

ELECTRICAL:

EMI SHIELDING :
SHIELDED FOR THE RANGE
55dB UP TO 100MHz

INSULATION RESISTANCE :
>500MΩ PER ANSI-EIA-364-D METHOD 21

MAX. CURRENT RATING :
(SEE TABLE 1)
MAXIMUM CURRENT THAT CAN BE APPLIED SIMULTANEOUSLY
ON EACH LINE OF THE CONNECTOR MATED PAIR, CONTINUOUSLY
DURING ITS LIFE TIME IN NORMAL CLIMATIC CONDITIONS.

CONNECTOR TESTING :
1300Vrms
TEST VOLTAGE IS APPROXIMATELY 75% OF THE DWV
VOLTAGE AT NORMAL CLIMATIC CONDITIONS. THIS
VOLTAGE CAN BE ACHIEVED SEVERAL TIMES, BUT NOT
APPLIED CONTINUOUSLY.

CONNECTOR WORKING :
600/420 (Vdc/ Vrms)
WORKING VOLTAGE IS APPROXIMATELY 1/3 OF THE
TEST VOLTAGE. THIS VOLTAGE IS SUSTAINABLE FOR
THE LIFE OF THE CONNECTOR IN ITS WORKING
ENVIRONMENT.

PHYSICAL:

MAXIMUM WIRE SIZE USED : 24 AWG

ENVIRONMENTAL:

ENDURANCE: 1000 CYCLES AS PER MIL-STD 1344A, METHOD 2016.1

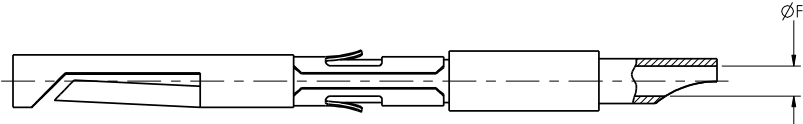
SHOCK: 50 g , DURATION 6 ms; AS PER MIL-STD 1344A, METHOD 2004.1

VIBRATIONS: 10 TO 2000Hz γ = 15g, AS PER MIL-STD 1344A, METHOD 2005.1

PROTECTION INDEX: IP 40 AS PER CEI 529

OPERATING TEMPERATURE: -55°C TO +200°C (-67°F TO +392°F)

SOCKET CONTACT



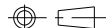
CONTACT		USABLE CABLES		AWG	MAX. CURRENT RATING (A)	CONTACT RESISTANCE (mΩ)
ØC	ØF	CORE SECTION (mm ²)				
		MIN.	MAX.			
-	0.8	-	0.21	24	10	3.5

LINEAR
MEASURE:

INCH

mm (INCH)

THIRD ANGLE PROJECTION



TOLERANCES
UNLESS OTHERWISE SPECIFIED:

No. OF PLACES

mm (INCH)

WHOLE No.

±0.5 (±.02)

ONE PLACE

±0.2 (±.008)

TWO PLACES

±0.1 (±.004)

ANGLES±1°

DRAWING TITLE

JBX, SIZE 0, 3 POSITION, ER RECEPTACLE

CAT NO.


JBXEROG03FSSDSR

CAGE NO: 09922

SIZE: C

CUSTOMER

INTERPRET THIS DRAWING IN ACCORDANCE
WITH ASME Y14.5M - 1994.



www.souriau.com

APPROVAL

DRAWN: SNL

01-07-11

CHKD : TW

01-07-11

DSGN : XXX

mm_dd_yy

PMFG : DH

01-07-11

QC : DK

01-07-11

DRAWING SCALE: 8:1

DRAWING NO.

REV

JBXEROG03FSSDSRC

A

2 OF 2

PRO-E

THIS DRAWING IS A CONTROLLED DOCUMENT FOR SOURIAU USA, INC.
IT IS THE PROPERTY OF SOURIAU USA, INC. AND IS NOT TO BE
REPRODUCED OR TRANSMITTED IN ANY FORM OR BY ANY MEANS,
ELECTRONIC OR MECHANICAL, INCLUDING PHOTOCOPYING, RECORDING,
OR BY ANY INFORMATION STORAGE AND RETRIEVAL SYSTEM.
CONTACT THE DOCUMENT CONTROL CENTER FOR THE LATEST REVISION.

C

B

B

A