

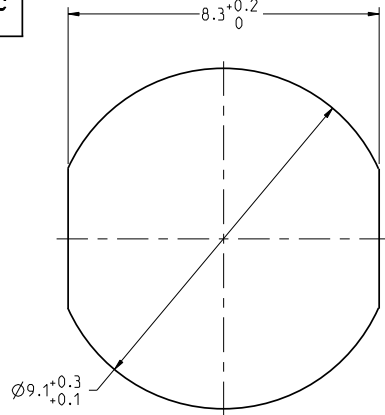
THIS DRAWING IS A CONTROLLED DOCUMENT FOR SOURIAU USA, INC.
FOR THE PURPOSE OF CONTROLLING THE QUALITY OF THE PRODUCT.
CONTACT THE DOCUMENT CONTROL CENTER FOR THE LATEST REVISION.

C

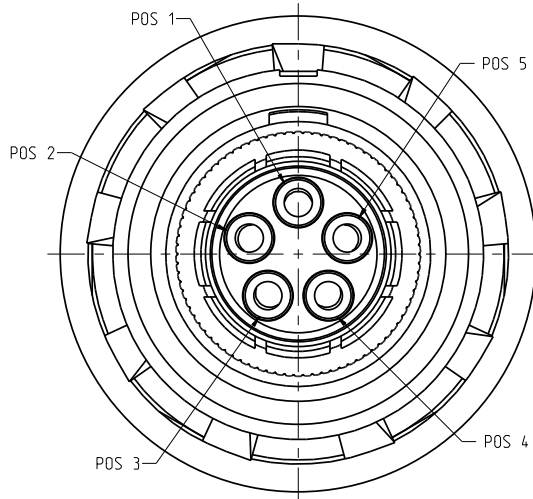
B

THE INFORMATION CONTAINED IN THIS DRAWING IS CONFIDENTIAL AND MAY NOT BE
DISCLOSED WITHOUT WRITTEN CONSENT FROM SOURIAU USA, INC.

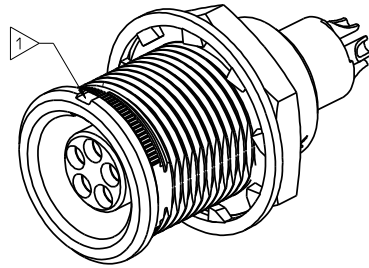
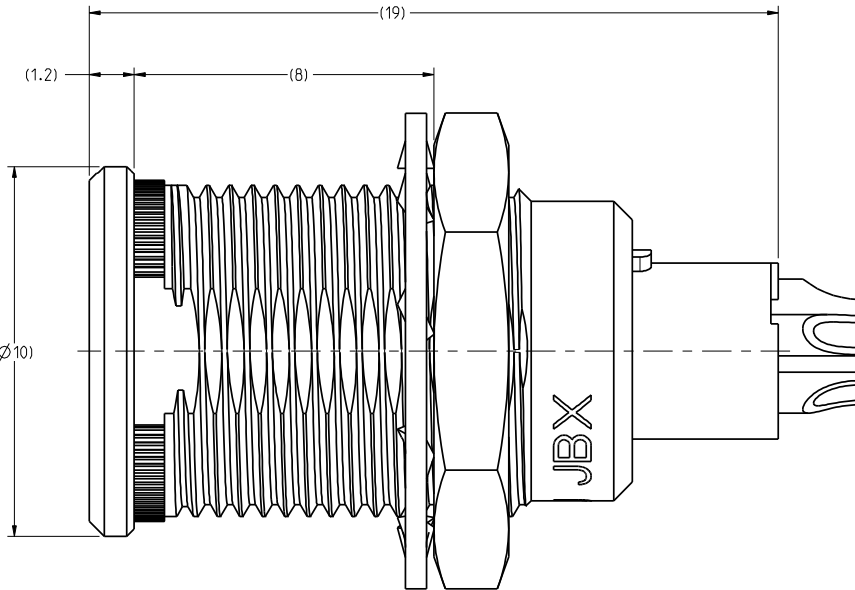
DWG. NO.
JBXEROG05FSSDSRC



RECOMMENDED
PANEL CUTOUT



MATING SIDE VIEW



SCALE 4:1

NOTES:

1 RED BAND.

MATERIAL:

OUTER SHELL :
SHIELDING RING :
NUT : } BRASS CuZn40Pb3 (C38500/C36000)

SOCKET CONTACT (SOLDER) : CUPRO-NICKEL CuNi1Pb1P (CDAC 19150)

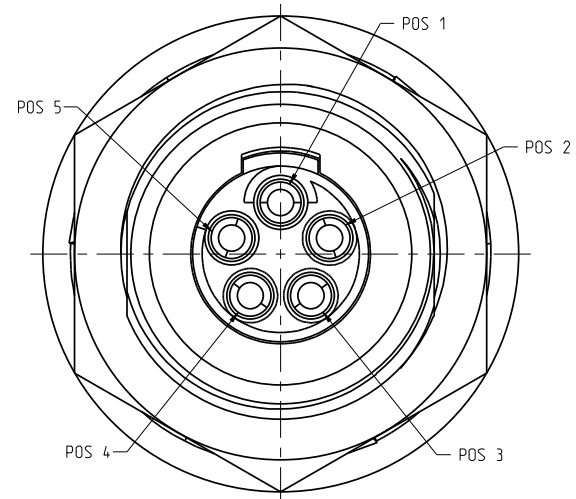
INSULATOR : PEEK WITH 15% GLASS FILLED, COLOR BROWN

FINISH:

OUTER SHELL : CHROME OVER NICKEL UNDERCOAT

OTHER BRASS PARTS
EXCEPT SOCKET CONTACTS : NICKEL

SOCKET CONTACTS : GOLD AS PER MIL-G-45204C TYPE 1, CLASS 00.



WIRE SIDE VIEW

A	RELEASED PER ECN 11345	SSF 01-18-11	SDH 01-18-11
REV	DESCRIPTION	BY DATE	CHKD DATE

DRAWING TITLE

JBX, SIZE 0, 5 POSITION, ER RECEPTACLE

CAT NO.

JBXEROG05FSSDSR

CAGE NO: 09922

SIZE: C

CUSTOMER

SOURIAU
Connection Technology

www.souriau.com

INTERPRET THIS DRAWING IN ACCORDANCE
WITH ASME Y14.5M - 1994.

DRAWN: RKO	01-10-11
CHKD : TW	01-10-11
DSGN : XXX	mm-dd-yy
IMFG : DH	01-10-11
QC : DK	01-10-11

DRAWING SCALE: 8:1

DRAWING NO. REV

JBXEROG05FSSDSRC A

1 OF 2

PRO-E

4

3

2

1

DWG. NO.
JBXEROG05FSSDSRC

THIS DRAWING IS A CONTROLLED DOCUMENT FOR SOURIAU USA, INC.
IT IS THE RESPONSIBILITY OF THE USER TO ENSURE THAT THE LATEST REVISION
OF THIS DRAWING IS USED FOR THE PROJECT.

THIS DRAWING IS A CONTROLLED DOCUMENT FOR SOURIAU USA, INC.
IT IS THE RESPONSIBILITY OF THE USER TO ENSURE THAT THE LATEST REVISION
OF THIS DRAWING IS USED FOR THE PROJECT.

THIS DRAWING IS A CONTROLLED DOCUMENT FOR SOURIAU USA, INC.
IT IS THE RESPONSIBILITY OF THE USER TO ENSURE THAT THE LATEST REVISION
OF THIS DRAWING IS USED FOR THE PROJECT.

THIS DRAWING IS A CONTROLLED DOCUMENT FOR SOURIAU USA, INC.
IT IS THE RESPONSIBILITY OF THE USER TO ENSURE THAT THE LATEST REVISION
OF THIS DRAWING IS USED FOR THE PROJECT.

ELECTRICAL:

EMI SHIELDING :
SHIELDED FOR THE RANGE
55dB UP TO 100MHz

INSULATION RESISTANCE :
>500MΩ PER ANSI-EIA-364-D METHOD 21

MAX. CURRENT RATING :
(SEE TABLE 1)
MAXIMUM CURRENT THAT CAN BE APPLIED SIMULTANEOUSLY
ON EACH LINE OF THE CONNECTOR MATED PAIR, CONTINUOUSLY
DURING ITS LIFE TIME IN NORMAL CLIMATIC CONDITIONS.

CONNECTOR TESTING :
VOLTAGE
800Vrms
TEST VOLTAGE IS APPROXIMATELY 75% OF THE DWV
VOLTAGE AT NORMAL CLIMATIC CONDITIONS. THIS
VOLTAGE CAN BE ACHIEVED SEVERAL TIMES, BUT NOT
APPLIED CONTINUOUSLY.

CONNECTOR WORKING :
VOLTAGE
400/260 (Vdc/ Vrms)
WORKING VOLTAGE IS APPROXIMATELY 1/3 OF THE
TEST VOLTAGE. THIS VOLTAGE IS SUSTAINABLE FOR
THE LIFE OF THE CONNECTOR IN ITS WORKING
ENVIRONMENT.

PHYSICAL:

MAXIMUM WIRE SIZE USED :
26 AWG

ENVIRONMENTAL:

ENDURANCE:
1000 CYCLES AS PER MIL-STD 1344A, METHOD 2016.1

SHOCK:
50 g , DURATION 6 ms; AS PER MIL-STD 1344A, METHOD 2004.1

VIBRATIONS:
10 TO 2000Hz **γ** = 15g, AS PER MIL-STD 1344A, METHOD 2005.1

PROTECTION INDEX:
IP 40 AS PER CEI 529

OPERATING TEMPERATURE:
-55°C TO +200°C (-67°F TO +392°F)

SOCKET CONTACT

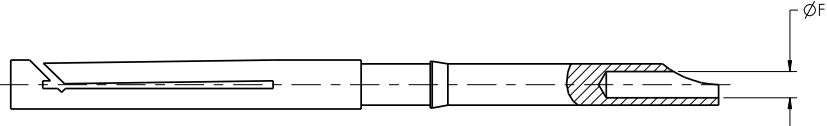
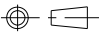


TABLE 1						
CONTACT		USABLE CABLES			MAX. CURRENT RATING (A)	CONTACT RESISTANCE (mΩ)
ØC	ØF	CORE SECTION (mm ²)		AWG		
		MIN.	MAX.			
-	0.63	-	0.15	26	7	5

LINEAR
MEASURE:
THIRD ANGLE PROJECTION



TOLERANCES
UNLESS OTHERWISE SPECIFIED:
No. OF PLACESmm (INCH)
WHOLE No.±0.5 (±.02)
ONE PLACE±0.2 (±.008)
TWO PLACES±0.1 (±.004)
ANGLES±1°


DRAWING TITLE
JBX, SIZE 0, 5 POSITION, ER RECEPTACLE

CAT NO.
JBXEROG05FSSDSR

CAGE NO: 09922SIZE: C

CUSTOMER

INTERPRET THIS DRAWING IN ACCORDANCE
WITH ASME Y14.5M - 1994.


www.souriau.com

APPROVAL
DRAWN: RK001-10-11
CHKD : TW01-10-11
DSGN : XXXmm-dd-yy
MFG : DH01-10-11
QC : DK01-10-11
DRAWING SCALE: 8:1
DRAWING NO. REV
JBXEROG05FSSDSRC A

2 OF 2

4

3

2

1

PRO-E