

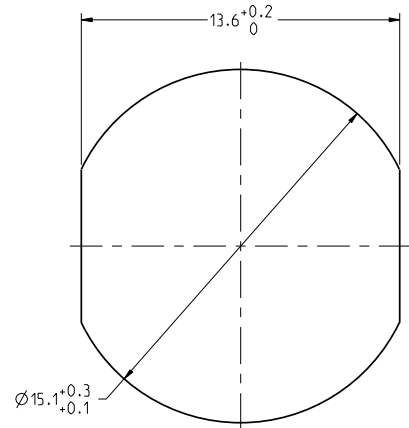
THIS DRAWING IS A CONTROLLED DOCUMENT FOR SOURIAU USA, INC.
ALL INFORMATION CONTAINED HEREIN IS UNCLASSIFIED EXCEPT WHERE SHOWN OTHERWISE.
CONTACT THE DOCUMENT CONTROL CENTER FOR THE LATEST REVISION.

C

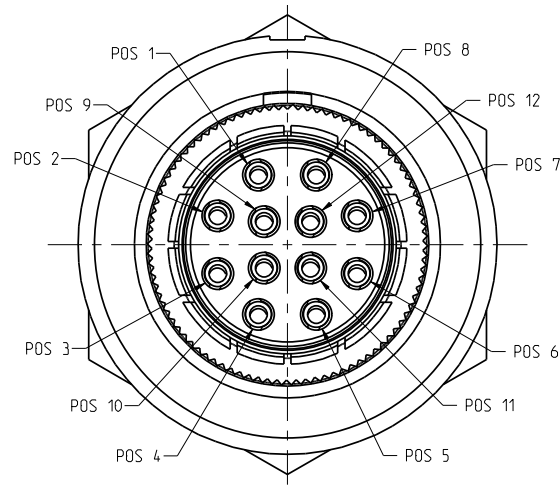
B

THE INFORMATION CONTAINED IN THIS DRAWING IS CONFIDENTIAL AND MAY NOT BE
DISCLOSED WITHOUT WRITTEN CONSENT FROM SOURIAU USA, INC.

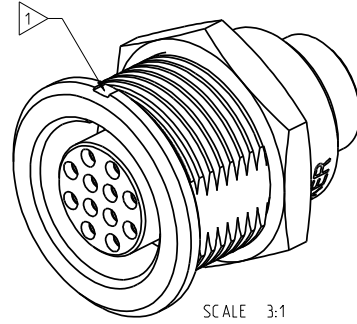
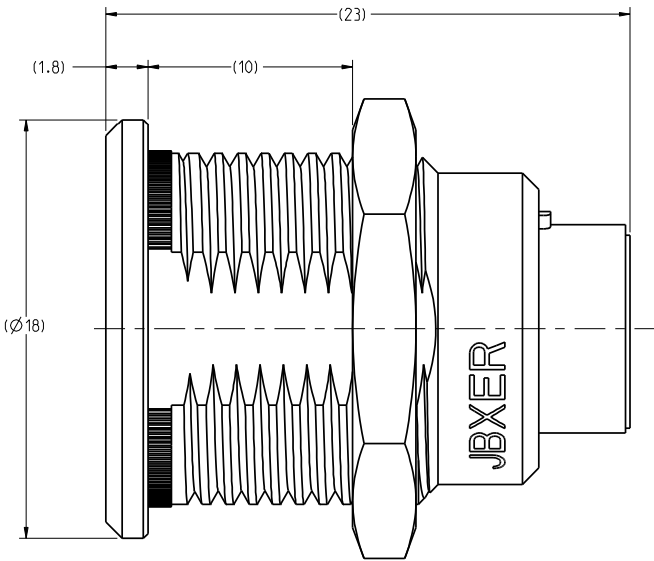
DWG. NO.
JBXER2G12FCSDSRC



RECOMMENDED
PANEL CUTOUT



MATING SIDE VIEW



SCALE 3:1

NOTES:

1 RED DOT.

MATERIAL:

OUTER SHELL :
SHIELDING RING :
NUT :
} BRASS CuZn40Pb3 (C38500/C36000)

SOCKET CONTACT (CRIMP) : CUPRO-NICKEL CuNi1Pb1P (CDAC 19150)

CLIP : BERYLLIUM COPPER CuBe1,9 (C17200/C36000)

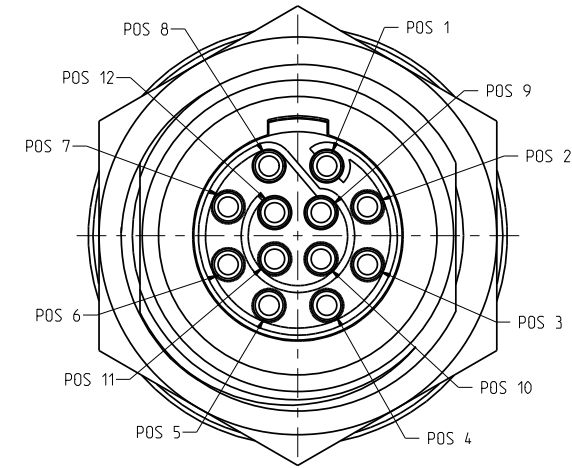
INSULATOR : PEEK WITH 15% GLASS FILLED, COLOR BROWN

FINISH:

OUTER SHELL : CHROME OVER NICKEL UNDERCOAT

OTHER BRASS PARTS
EXCEPT SOCKET CONTACTS : NICKEL

SOCKET CONTACTS : GOLD AS PER MIL-G-45204C TYPE 1, CLASS 00.



WIRE SIDE VIEW

D

C

B

A

| | | | |
|-----|------------------------|-----------------|-----------------|
| A | RELEASED PER ECN 11345 | SSF 01-18-11 | SDH 01-18-11 |
| REV | DESCRIPTION | BY DATE | CHKD DATE |

DRAWING TITLE

JBX, SIZE 2, 12 POSITION, ER RECEPTACLE

CAT NO.

JBXER2G12FCSDSR

CAGE NO: 09922

SIZE: C

CUSTOMER

INTERPRET THIS DRAWING IN ACCORDANCE
WITH ASME Y14.5M - 1994.



www.souriau.com

| | |
|------------|----------|
| DRAWN: RKD | 01-08-11 |
| CHKD : TW | 01-08-11 |
| DSGN : XXX | mm-dd-yy |
| MFG : DH | 01-08-11 |
| QC : DK | 01-08-11 |

DRAWING SCALE: 5:1

DRAWING NO. REV

JBXER2G12FCSDSRC A

1 OF 2

PRO-E

4

3

2

1

4

3

2

1

DWG. NO.
JBXER2G12FCSDSRC

ELECTRICAL:

EMI SHIELDING :
SHIELDED FOR THE RANGE
55dB UP TO 100MHz

INSULATION RESISTANCE :
>500MΩ PER ANSI-EIA-364-D METHOD 21

MAX. CURRENT RATING :
(SEE TABLE 1)
MAXIMUM CURRENT THAT CAN BE APPLIED SIMULTANEOUSLY
ON EACH LINE OF THE CONNECTOR MATED PAIR. CONTINUOUSLY
DURING ITS LIFE TIME IN NORMAL CLIMATIC CONDITIONS.

CONNECTOR TESTING :
VOLTAGE
1700 Vrms
TEST VOLTAGE IS APPROXIMATELY 75% OF THE DWV
VOLTAGE AT NORMAL CLIMATIC CONDITIONS. THIS
VOLTAGE CAN BE ACHIEVED SEVERAL TIMES, BUT NOT
APPLIED CONTINUOUSLY.

CONNECTOR WORKING :
VOLTAGE
830/560 (Vdc/ Vrms)
WORKING VOLTAGE IS APPROXIMATELY 1/3 OF THE
TEST VOLTAGE. THIS VOLTAGE IS SUSTAINABLE FOR
THE LIFE OF THE CONNECTOR IN ITS WORKING
ENVIRONMENT.

PHYSICAL:

MAXIMUM WIRE SIZE USED FOR CRIMPING : 22 AWG

ENVIRONMENTAL:

ENDURANCE:
500 CYCLES AS PER MIL-STD 1344A, METHOD 2016.1

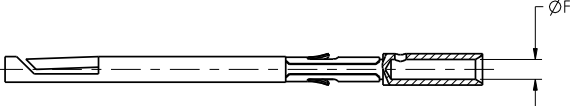
SHOCK:
50 g , DURATION 6 ms; AS PER MIL-STD 1344A, METHOD 2004.1

VIBRATIONS:
10 TO 2000Hz γ = 15 g, AS PER MIL-STD 1344A, METHOD 2005.1

PROTECTION INDEX:
IP 40 AS PER CEI 529

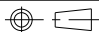
OPERATING TEMPERATURE:
-55°C TO +200°C (-67°F TO +392°F)

SOCKET CONTACT



| TABLE 1 | | | | | | |
|---------|------|---------------------------------|-------|----------|-------------------------------|-------------------------------|
| CONTACT | | USABLE CABLES | | | MAX. CURRENT RATING (A) | CONTACT RESISTANCE (mΩ) |
| ØC | ØF | CORE SECTION (mm ²) | | AWG | | |
| | | MIN. | MAX. | | | |
| - | 0.85 | 0.129 | 0.326 | 22-24-26 | 7 | 5 |

LINEAR
MEASURE:
THIRD ANGLE PROJECTION



TOLERANCES
UNLESS OTHERWISE SPECIFIED:
No. OF PLACESmm (INCH)
WHOLE No.±0.5 (±.02)
ONE PLACE±0.2 (±.008)
TWO PLACES±0.1 (±.004)
ANGLES±1°


DRAWING TITLE
JBX, SIZE 2, 12 POSITION, ER RECEPTACLE

CAT NO.
JBXER2G12FCSDSR

CAGE NO: 09922SIZE: C

CUSTOMER

INTERPRET THIS DRAWING IN ACCORDANCE
WITH ASME Y14.5M - 1994.


www.souriau.com

APPROVAL
DRAWN: RK001-08-11
CHKD : TW01-08-11
DSGN : XXXmm-dd-yy
MFG : DH01-08-11
QC : DK01-08-11
DRAWING SCALE: 5:1
DRAWING NO. REV
JBXER2G12FCSDSRC A
2 OF 2

PRO-E

4

3

2

1

THIS DRAWING IS A CONTROLLED DOCUMENT FOR SOURIAU USA, INC.
IT IS THE RESPONSIBILITY OF THE USER TO CONTACT THE DOCUMENT CONTROL CENTER FOR THE LATEST REVISION.

C

B

A

D

C

B

A