

DWG. NO.
JBXFD0G05MSSDSMRC

4

ELECTRICAL:

EMI SHIELDING :	SHIELDED FOR THE RANGE 55dB UP TO 100MHz
INSULATION RESISTANCE :	>500M Ω PER ANSI-EIA-364-D METHOD 21
MAX. CURRENT RATING :	(SEE TABLE 1) MAXIMUM CURRENT THAT CAN BE APPLIED SIMULTANEOUSLY ON EACH LINE OF THE CONNECTOR MATED PAIR, CONTINUOUSLY DURING ITS LIFE TIME IN NORMAL CLIMATIC CONDITIONS.
CONNECTOR TESTING : VOLTAGE	800Vrms TEST VOLTAGE IS APPROXIMATELY 75% OF THE DWV VOLTAGE AT NORMAL CLIMATIC CONDITIONS. THIS VOLTAGE CAN BE ACHIEVED SEVERAL TIMES, BUT NOT APPLIED CONTINUOUSLY.
CONNECTOR WORKING : VOLTAGE	400/260 (Vdc/ Vrms) WORKING VOLTAGE IS APPROXIMATELY 1/3 OF THE TEST VOLTAGE. THIS VOLTAGE IS SUSTAINABLE FOR THE LIFE OF THE CONNECTOR IN ITS WORKING ENVIRONMENT.

MAXIMUM WIRE SIZE USED : 26 AWG
CABLE DIAMETER WITH PLASTIC : Ø1.5mm MIN.
COLLET SET SUPPLIED TO Ø5.5mm MAX.

ENDURANCE:	500 CYCLES AS PER MIL-STD 1344A, METHOD 2016.1
SHOCK:	50 g , DURATION 6 ms; AS PER MIL-STD 1344A, METHOD 2004.1
VIBRATIONS:	10 TO 2000Hz γ = 15g, AS PER MIL-STD 1344A, METHOD 2005.1
PROTECTION INDEX:	IP 40 AS PER CEI 529
OPERATING TEMPERATURE: WITH PLASTIC COLLETS:	-55°C TO +125°C (-67°F TO +257°F)
WITH OPTIONAL METALLIC COLLETS: (ONLY ON REQUEST)	-55°C TO +200°C (-67°F TO +392°F)

PIN CONTACT

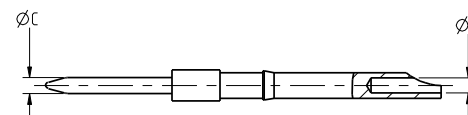


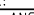



TABLE 1						
CONTACT		USABLE CABLES			MAX. CURRENT RATING (A)	CONTACT RESISTANCE (mΩ)
ØC	ØF	CORE SECTION (mm ²)		AWG		
		MIN.	MAX.			
0.7	0.7	-	0.30	26	7	5

LINEAR MEASURE:		 (mm)
THIRD ANGLE PROJECTION		
		
TOLERANCES UNLESS OTHERWISE SPECIFIED		
No. OF PLACES	mm (INCH)	
WHOLE No.	± 0.5 ($\pm .005$)	
ONE PLACE	± 0.2 ($\pm .002$)	
TWO PLACES	± 0.1 ($\pm .001$)	
ANGLES $\pm 1^\circ$		

DRAWING TITLE																				
JBX, SIZE 0, 05 POSITION, MALE STRAIGHT PLUG																				
CAT NO.																				
JBXFD0G05MSSDSMR																				
CAGE NO: 09922	SIZE: C																			
<div style="font-size: 2em; font-weight: bold; margin-bottom: 10px;">CUSTOMER</div> <div style="text-align: center;">  SOURIAU <i>Connection Technology</i> </div>		<div style="writing-mode: vertical-rl; transform: rotate(180deg); font-weight: bold; margin-bottom: 5px;">APPROVAL</div> <table border="1" style="width: 100%; border-collapse: collapse;"> <tr> <td style="width: 80%;">DRAWN: TJS</td> <td style="width: 20%;">12-18-10</td> </tr> <tr> <td>CHKD : TW</td> <td>12-18-10</td> </tr> <tr> <td>DSGN : XXX</td> <td>mm-dd-yy</td> </tr> <tr> <td>MFG : DH</td> <td>12-18-10</td> </tr> <tr> <td>QC : DK</td> <td>12-18-10</td> </tr> <tr> <td colspan="2" style="text-align: center;">DRAWING SCALE: 5:1</td> </tr> <tr> <td colspan="2" style="text-align: center;">DRAWING NO. REV</td> </tr> <tr> <td colspan="2" style="text-align: center;">JBXFD0G05MSSDSMR</td> </tr> <tr> <td colspan="2" style="text-align: center;">A</td> </tr> </table>	DRAWN: TJS	12-18-10	CHKD : TW	12-18-10	DSGN : XXX	mm-dd-yy	MFG : DH	12-18-10	QC : DK	12-18-10	DRAWING SCALE: 5:1		DRAWING NO. REV		JBXFD0G05MSSDSMR		A	
		DRAWN: TJS	12-18-10																	
		CHKD : TW	12-18-10																	
		DSGN : XXX	mm-dd-yy																	
		MFG : DH	12-18-10																	
QC : DK	12-18-10																			
DRAWING SCALE: 5:1																				
DRAWING NO. REV																				
JBXFD0G05MSSDSMR																				
A																				
<div style="font-weight: bold; margin-bottom: 5px;">www.souriau.com</div> <div style="font-size: 1.5em;">2 OF 2</div>																				

D

4

PRO-E