

EMI SHIELDING :	SHIELDED FOR THE RANGE 55db UP TO 100MHz
INSULATION RESISTANCE :	>500M Ω PER ANSI-EIA-364-D METHOD 21
MAX. CURRENT RATING :	(SEE TABLE 1) MAXIMUM CURRENT THAT CAN BE APPLIED SIMULTANEOUSLY ON EACH LINE OF THE CONNECTOR MATED PAIR, CONTINUOUSLY DURING ITS LIFE TIME IN NORMAL CLIMATIC CONDITIONS.
CONNECTOR TESTING : VOLTAGE	1900Vrms TEST VOLTAGE IS APPROXIMATELY 75% OF THE DWV VOLTAGE AT NORMAL CLIMATIC CONDITIONS. THIS VOLTAGE CAN BE ACHIEVED SEVERAL TIMES, BUT NOT APPLIED CONTINUOUSLY.
CONNECTOR WORKING : VOLTAGE	900/630 (Vdc/ Vrms) WORKING VOLTAGE IS APPROXIMATELY 1/3 OF THE TEST VOLTAGE. THIS VOLTAGE IS SUSTAINABLE FOR THE LIFE OF THE CONNECTOR IN ITS WORKING ENVIRONMENT.

MAXIMUM WIRE SIZE USED : 24 AWG

CABLE DIAMETER WITH PLASTIC : $\varnothing 2.0$ mm MIN.
COLLET SET SUPPLIED TO $\varnothing 7.5$ mm MAX.

ENDURANCE:	1000 CYCLES AS PER MIL-STD 1344A, METHOD 2016.1
SHOCK:	50 g , DURATION 6 ms; AS PER MIL-STD 1344A, METHOD 2004.1
VIBRATIONS:	10 TO 2000Hz γ = 15g, AS PER MIL-STD 1344A, METHOD 2005.1
PROTECTION INDEX:	IP 40 AS PER CEI 529
OPERATING TEMPERATURE:	
WITH PLASTIC COLLETS:	-55°C TO +125°C (-67°F TO +257°F)
WITH OPTIONAL METALLIC COLLETS:	-55°C TO +200°C (-67°F TO +392°F)
(ONLY ON REQUEST)	

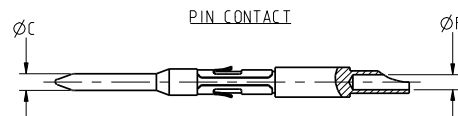






TABLE 1						
CONTACT		USABLE CABLES			MAX. CURRENT RATING (A)	CONTACT RESISTANCE (mΩ)
ØC	ØF	CORE SECTION (mm ²)		AWG		
		MIN.	MAX.			
0.9	0.8	-	0.21	24	10	3.5

LINEAR MEASURE:	 (INCH)	 (INCH)
THIRD ANGLE PROJECTION		
		
TOLERANCES		
UNLESS OTHERWISE SPECIFIED		
No. OF PLACES	mm (INCH)	
WHOLE No.	± 0.5 [$\pm .02$]	
ONE PLACE	± 0.2 [$\pm .008$]	
TWO PLACES	± 0.1 [$\pm .004$]	
ANGLES $\pm 1^\circ$		

DRAWING TITLE			
JBX, SIZE 1, 4 POSITION, MALE STRAIGHT PLUG			
CAT NO.			
JBXFD1GO4MSSDSMR			
CAGE NO: 09922	SIZE: C		
CUSTOMER	 SOURIAU <small>Connection Technology</small>	APPROVAL	DRAWN: RKO 12-18-10 CHKD : TW 12-18-10 DSGN : xxx mm-dd-yy MFG : DH 12-18-10 QC : DK 12-18-10
		DRAWING SCALE: 4:1	
		DRAWING NO.	REV
		JBXFD1GO4MSSDSMRC	A
		2 OF 2	