

DWG. NO.
JBXFD2G06MCSDSMRC

ELECTRICAL:

EMI SHIELDING : SHIELDED FOR THE RANGE
55dB UP TO 100MHz

INSULATION RESISTANCE : >500M Ω PER ANSI-EIA-364-D METHOD 21

MAX. CURRENT RATING : (SEE TABLE 1)
MAXIMUM CURRENT THAT CAN BE APPLIED SIMULTANEOUSLY
ON EACH LINE OF THE CONNECTOR MATED PAIR, CONTINUOUSLY
DURING ITS LIFE TIME IN NORMAL CLIMATIC CONDITIONS.

CONNECTOR TESTING : 1900Vrms
VOLTAGE TEST VOLTAGE IS APPROXIMATELY 75% OF THE DWV
VOLTAGE AT NORMAL CLIMATIC CONDITIONS. THIS
VOLTAGE CAN BE ACHIEVED SEVERAL TIMES, BUT NOT
APPLIED CONTINUOUSLY.

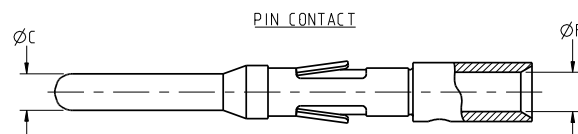
CONNECTOR WORKING : 900/630 (Vdc/ Vrms)
VOLTAGE WORKING VOLTAGE IS APPROXIMATELY 1/3 OF THE
TEST VOLTAGE. THIS VOLTAGE IS SUSTAINABLE FOR
THE LIFE OF THE CONNECTOR IN ITS WORKING
ENVIRONMENT.

PHYSICAL:



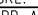
MAXIMUM WIRE SIZE USED FOR CRIMPING : 18 AWG
CABLE DIAMETER WITH PLASTIC : Ø3.5 mm MIN.
COLLET SET SUPPLIED TO Ø9.7 mm MAX.


ENVIRONMENTAL:

ENDURANCE:	1000 CYCLES AS PER MIL-STD 1344A, METHOD 2016.1
SHOCK:	100 g , DURATION 6 ms; AS PER MIL-STD 1344A, METHOD 2004.1
VIBRATIONS:	10 TO 2000Hz γ = 20 g, AS PER MIL-STD 1344A, METHOD 2005.1
PROTECTION INDEX:	IP 40 AS PER CEI 529
OPERATING TEMPERATURE:	
WITH PLASTIC COLLETS:	-55°C TO +125°C (-67°F TO +257°F)
WITH OPTIONAL METALLIC COLLETS:	-55°C TO +200°C (-67°F TO +392°F)
(ONLY ON REQUEST)	



CONTACT		USABLE CABLES		MAX. CURRENT RATING (A)	CONTACT RESISTANCE (mΩ)
ØC	ØF	CORE SECTION (mm ²)			
		MIN.	MAX.		
1.3	1.4	0.326	0.823	15	3

LINEAR MEASURE:  (INCH)  (MM)	
THIRD ANGLE PROJECTION	
	
TOLERANCES	
UNLESS OTHERWISE SPECIFIED	
No. OF PLACES	mm [INCH]
WHOLE No.	± 0.5 [$\pm .005$]
ONE PLACE	± 0.2 [$\pm .002$]
TWO PLACES	± 0.1 [$\pm .001$]
ANGLES $\pm 1^\circ$	

DRAWING TITLE			
JBX, SIZE 2, 06 POSITION, MALE STRAIGHT PLUG			
CAT NO.			
JBXFD2G06MCSDSMR			
CAGE NO: 09922		SIZE: C	
<p>CUSTOMER</p> <p>INTERPRET THIS DRAWING IN ACCORDANCE WITH ASME Y14.5M - 1994.</p>		 <p>SOURIAU Connection Technology</p> <p>www.souriau.com</p>	DRAWN: JJM 12-20-10 CHKD : TW 12-20-10 DSGN : XXX mm-dd-yy MFG : DH 12-20-10 QC : DK 12-20-10
			DRAWING SCALE: 4:1
			DRAWING NO. REV
			JBXFD2G06MCSDSMR A
			クネク