

# Customer Information Sheet

DRAWING No.: M7684-XX - M7687-XX

SHEET 2 OF 2

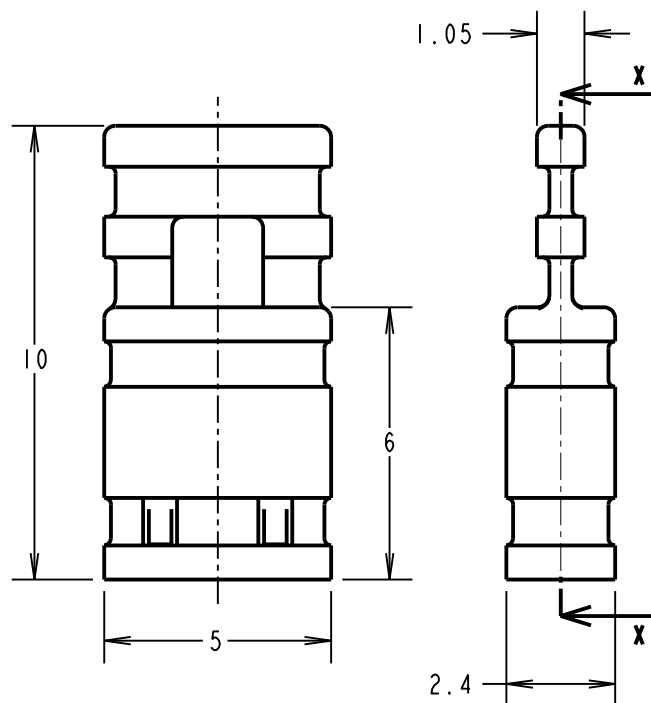
IF IN DOUBT - ASK

©

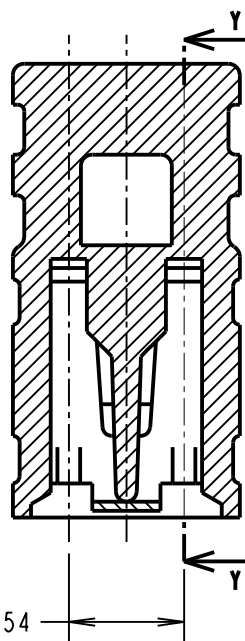
NOT TO SCALE

THIRD ANGLE PROJECTION

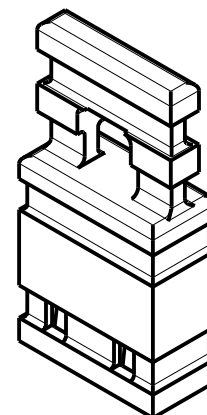
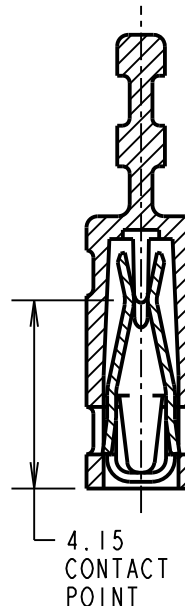
ALL DIMENSIONS IN mm



SECTION X-X



SECTION Y-Y



SCALE 5

ORDER CODE:

M768X-XX

MOULDING COLOUR

4 - LT. GREY

5 - RED

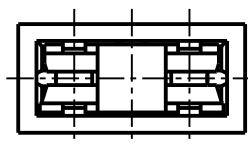
6 - BLACK

7 - BLUE

CONTACT FINISH

05 - GOLD

46 - 100% TIN



## NOTES:

- MATING PIN = 0.64mm SQUARE,  
MAXIMUM LENGTH = 5.6mm.
- FOR FULL ELECTRICAL/MECHANICAL  
SPECIFICATIONS, SEE COMPONENT  
SPECIFICATION C003XX (LATEST ISSUE).

## SPECIFICATIONS:

## MATERIAL:

MOULDING = POLYESTER UL94V-0  
(SEE ORDER CODE FOR COLOUR)

CONTACT = PHOSPHOR BRONZE

## FINISH:

05 = 0.13µ GOLD

46 = 3µ 100% TIN

## MECHANICAL:

DURABILITY = 50 OPERATIONS (TIN)  
300 OPERATIONS (GOLD)

INSERTION FORCE = 12.5N MAX

WITHDRAWAL FORCE = 1.0N MIN

## ELECTRICAL:

CURRENT RATING = 3A MAX

VOLTAGE RATING = 250V AC/DC

VOLTAGE PROOF = 750V AC

CONTACT RESISTANCE = 30mΩ MAX (TIN)

25mΩ MAX (GOLD)

INSULATION RESISTANCE = 1,000MΩ MIN

## ENVIRONMENTAL:

TEMPERATURE RANGE = -40°C TO +85°C

JMB	4	11.04.06	9154
NAME	ISS.	DATE	C/NOTE
APPROVED: MS			
CHECKED: BK			
DRAWN: W. J. BOURNE			
CUSTOMER REF.:			
ASSEMBLY DRG:			

**HARWIN**www.harwin.com  
technical@harwin.comTHIS DRAWING AND ANY  
INFORMATION OR DESCRIPTIVE  
MATTER SET OUT HEREON ARE  
CONFIDENTIAL AND COPYRIGHT  
PROPERTY OF THE HARWIN  
GROUP AND MUST NOT BE  
DISCLOSED, LOANED, COPIED  
OR USED FOR MANUFACTURING,  
TENDERING OR FOR ANY  
OTHER PURPOSE WITHOUT  
THEIR WRITTEN PERMISSION.

## TOLERANCES

X. = ±1mm

X.X = ±0.25mm

X.XX = ±0.10mm

X.XXX = ±0.01mm

ANGLES = ±5°

UNLESS STATED

## MATERIAL:

SEE TABLE

## FINISH:

SEE TABLE

## S/AREA:

mm<sup>2</sup>

## TITLE:

2.54mm PITCH  
CLOSED-BOX JUMPER SOCKET  
WITH HANDLE (10mm)

## DRAWING NUMBER:

M7684-XX - M7687-XX

SHT  
2 OF 2