

Customer Information Sheet

DRAWING No.: M80-19500XX

SHEET 2 OF 2

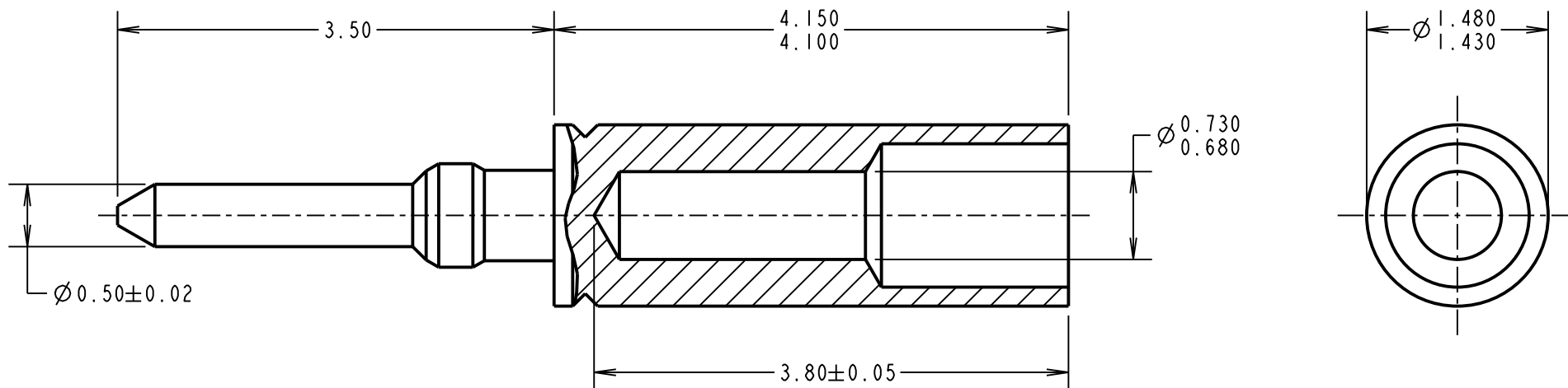
IF IN DOUBT - ASK

©

NOT TO SCALE

THIRD ANGLE PROJECTION

ALL DIMENSIONS IN mm

**SPECIFICATION:****MATERIAL:**

CONTACT SHELL = BRASS

FINISH:05 = 0.25 - 0.30 μ GOLD06 = 3.5 - 5.0 μ 100% TINOVER 1.0 - 2.0 μ NICKEL**MECHANICAL:**

DURABILITY = 500 OPERATIONS

ENVIRONMENTAL:

OPERATING TEMPERATURE = -55°C TO +125°C

PACKING:

BULK

FOR COMPLETE CONNECTOR SPECIFICATION, SEE
COMPONENT SPECIFICATION C005XX (LATEST ISSUE)**NOTES:**

- SUITABLE FOR WIRE GAUGE 24-28 AWG. MAXIMUM INSULATION DIAMETER $\varnothing 1.10\text{mm}$, BS 3G 210 TYPE A WIRE RECOMMENDED. STRIP WIRE BY 2.00mm FOR CRIMPING.
- RECOMMENDED CRIMP TOOL = M22520/2-01, POSITIONER = Z80-193
- FOR INSTRUCTIONS ON HAND CRIMP TOOL M22520/2-01, SEE INSTRUCTION SHEET IS-01.
- SUITABLE FOR USE IN MALE CRIMP JACKSCREW DATAMATE MOULDINGS.

ORDER CODE:

M80-19500XX

FINISH

06 - 3.5-5.0 μ 100% TIN OVER
1.0-2.0 μ NICKEL
05 - 0.25-0.30 μ GOLD

SM	3	08.11.11	11535
NAME	ISS.	DATE	C/NOTE
APPROVED: S. MCCULLAGH			
CHECKED: M. G. PLESTED			
DRAWN: W. J. BOURNE			
CUSTOMER REF.:			
ASSEMBLY DRG:			

HARWINwww.harwin.com
technical@harwin.com

THIS DRAWING AND ANY
INFORMATION OR DESCRIPTIVE
MATTER SET OUT HEREON ARE
CONFIDENTIAL AND COPYRIGHT
PROPERTY OF THE HARWIN
GROUP AND MUST NOT BE
DISCLOSED, LOANED, COPIED
OR USED FOR MANUFACTURING,
TENDERING OR FOR ANY
OTHER PURPOSE WITHOUT
THEIR WRITTEN PERMISSION.

TOLERANCESX. = $\pm 1\text{mm}$
X.X = $\pm 0.25\text{mm}$
X.XX = $\pm 0.10\text{mm}$
X.XXX = $\pm 0.01\text{mm}$ ANGLES = $\pm 5^\circ$

UNLESS STATED

MATERIAL:

BRASS

FINISH: SEE ORDER CODE

S/AREA: mm²**TITLE:**JACKSCREW DATAMATE
MALE CRIMP CONTACT
(SMALL BORE)

DRAWING NUMBER:

M80-19500XXSHT
2
OF 2