

# Customer Information Sheet

DRAWING No.: M80-5T10222MI-02-331-00-000

SHEET 2 OF 2

IF IN DOUBT - ASK

©

NOT TO SCALE

THIRD ANGLE PROJECTION

ALL DIMENSIONS IN mm

## SPECIFICATIONS:

**MATERIAL:**  
MOULDING: GLASS FILLED PPS, UL94V-0, BLACK  
SIGNAL CONTACT: PHOSPHOR BRONZE  
POWER CONTACT: COPPER ALLOY  
JACKSCREW: STAINLESS STEEL

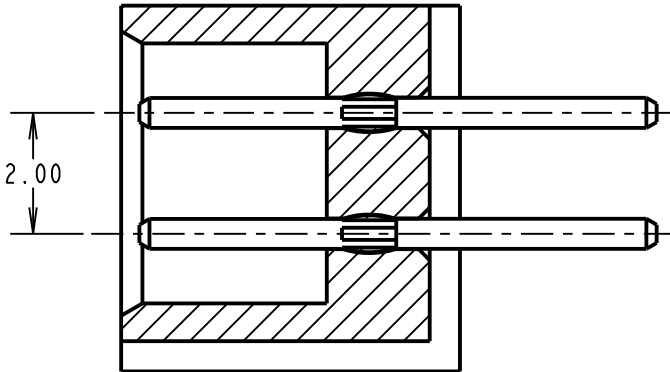
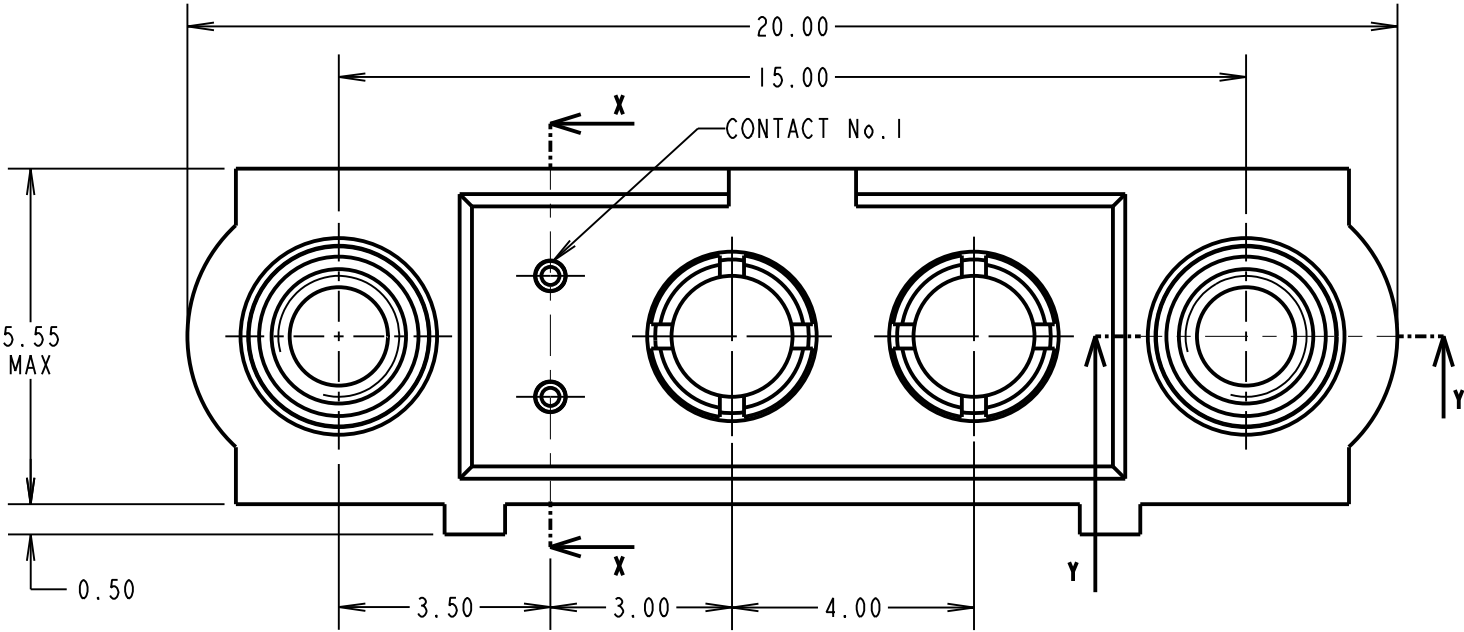
**FINISH:**  
SIGNAL CONTACT:  
0.75 $\mu$  GOLD ON CONTACT AREA,  
3 $\mu$  90/10 TIN/LEAD ON TAILS  
POWER CONTACT: GOLD

**ELECTRICAL:**  
WORKING VOLTAGE = 120V AC/DC  
VOLTAGE PROOF = 360V AC/DC  
INSULATION RESISTANCE = 100M $\Omega$  MIN  
SIGNAL CONTACT:  
CURRENT RATING AT 25°C = 3.0A MAX  
CURRENT RATING AT 85°C = 2.2A MAX  
CONTACT RESISTANCE = 25 m $\Omega$  MAX  
POWER CONTACT:  
CONTACT RESISTANCE 6 m $\Omega$  MAX  
CURRENT RATING = 20A MAX

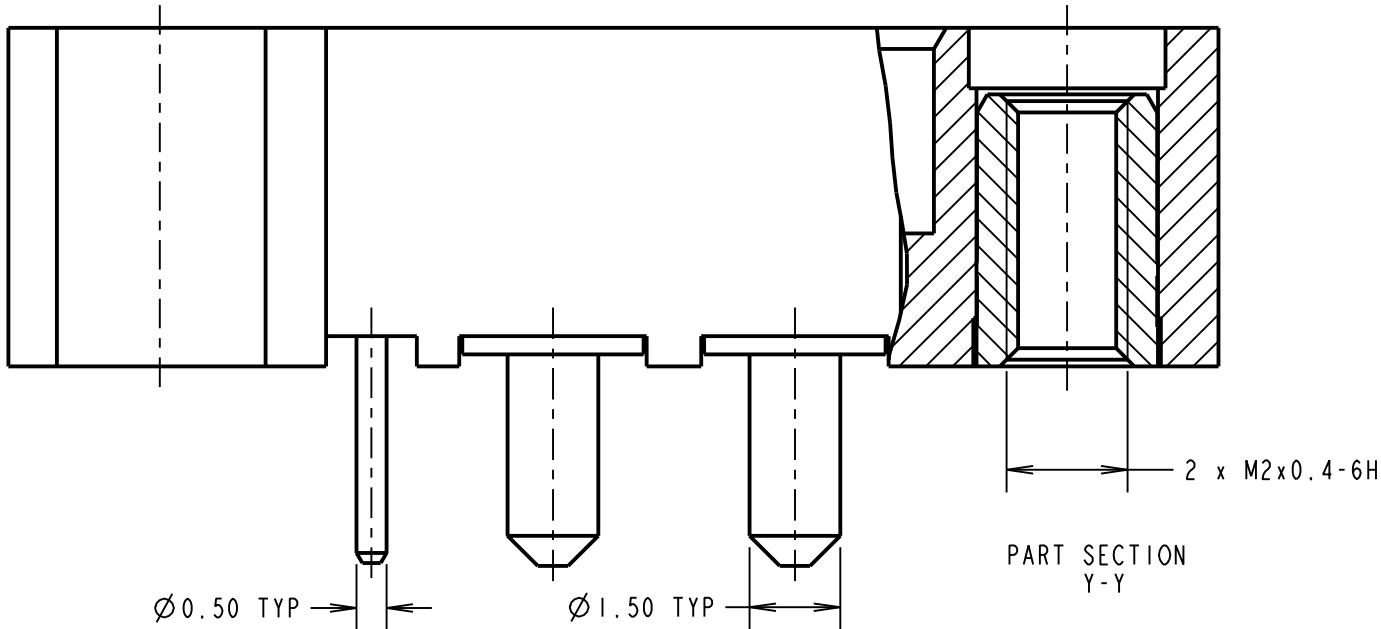
**MECHANICAL:**  
DURABILITY = 500 OPERATIONS  
SIGNAL CONTACT:  
INSERTION FORCE = 2.8N MAX  
WITHDRAWAL FORCE = 0.2N MIN  
POWER CONTACT:  
INSERTION FORCE = 5N MAX  
WITHDRAWAL FORCE = 0.5N MIN

**ENVIRONMENTAL:**  
TEMPERATURE RANGE = -55°C TO +125°C

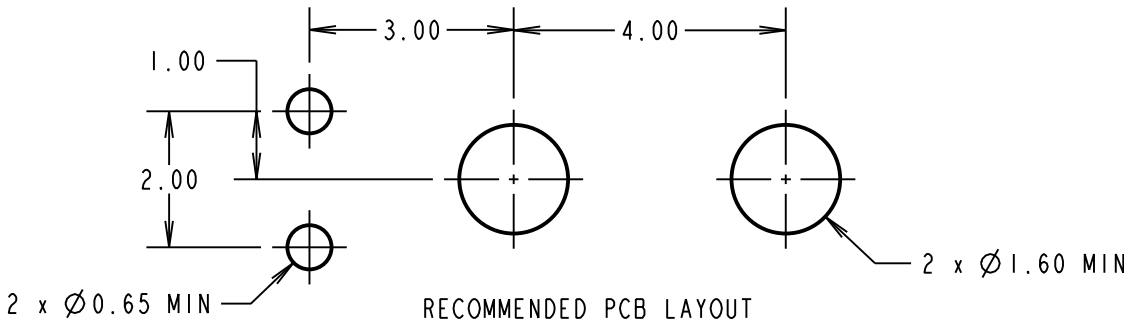
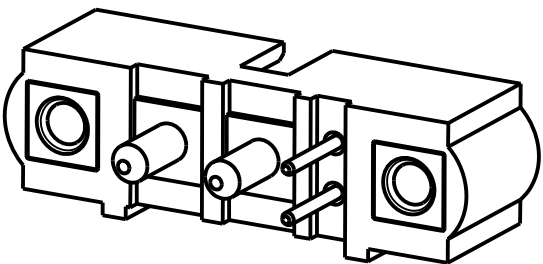
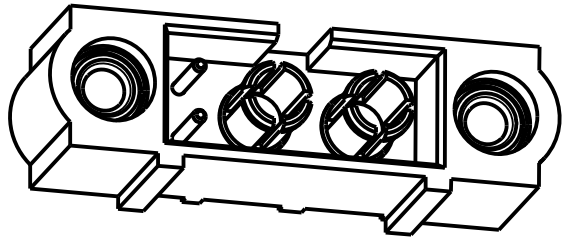
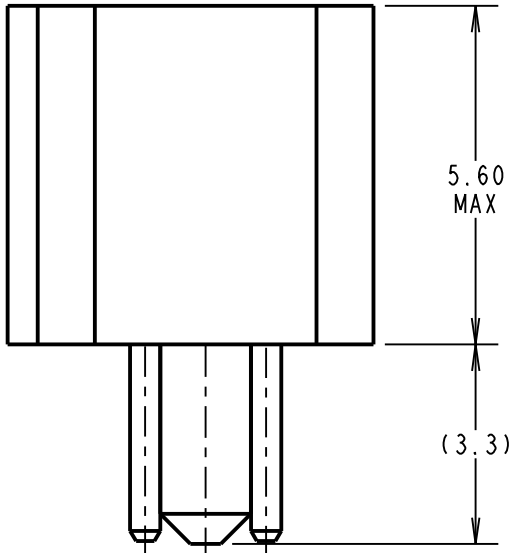
**PACKING:**  
TUBE  
FOR COMPLETE SPECIFICATION SEE COMPONENT  
SPECIFICATION C005XX (LATEST ISSUE)



SECTION X-X



PART SECTION Y-Y



RECOMMENDED PCB LAYOUT

SM	I	21.04.11	11249
NAME	ISS.	DATE	C/NOTE
APPROVED: S. MCCULLAGH			
CHECKED: M. G. PLESTED			
DRAWN: R. ADDE			
CUSTOMER REF.:			
ASSEMBLY DRG:			

<b>HARWIN</b>			THIS DRAWING AND ANY INFORMATION OR DESCRIPTIVE MATTER SET OUT HEREON ARE CONFIDENTIAL AND COPYRIGHT PROPERTY OF THE HARWIN GROUP AND MUST NOT BE DISCLOSED, LOANED, COPIED OR USED FOR MANUFACTURING, TENDERING OR FOR ANY OTHER PURPOSE WITHOUT THEIR WRITTEN PERMISSION.		TOLERANCES X. = $\pm 1$ mm X.X = $\pm 0.25$ mm X.XX = $\pm 0.10$ mm X.XXX = $\pm 0.01$ mm ANGLES = $\pm 5^\circ$ UNLESS STATED	MATERIAL: SEE ABOVE FINISH: SEE ABOVE S/AREA: mm <sup>2</sup>	TITLE: JACKSCREW DATAMATE MIXED TECHNOLOGY PC TAIL MALE ASSEMBLY DRAWING NUMBER: <b>M80-5T10222MI-02-331-00-000</b>	SHT 2 OF 2
HARWIN USA TEL: 603 893 5376 FAX: 603 893 5396 mis@harwin.com	HARWIN Europe (UK) TEL: 023 9231 4545 FAX: 023 9231 4590 mis@harwin.co.uk	HARWIN Asia TEL: +65 6 779 4909 FAX: +65 6 779 3868 mis@harwin.com.sg						