

Customer Information Sheet

DRAWING No.: M80-869XXXX

SHEET 2 OF 2

IF IN DOUBT - ASK

(C)

NOT TO SCALE

THIRD ANGLE PROJECTION

ALL DIMENSIONS IN mm

BRITISH STANDARD ORDER CODE:
TO BS9525 F0033

B5743-2XX-M-T-X

TOTAL No. OF WAYS
04, 06, 08, 10, 12, 14, 16,
18, 20, 26, 34, 44

FINISH:
0 = SELECTIVE GOLD
2 = GOLD

NOTES:

- 2-OFF STRAIN RELIEF STRAPS M80-0030006
CAN BE ORDERED SEPARATELY IF REQUIRED.
- FOR RoHS COMPLIANT PRODUCT USE M80-854XXXX

SPECIFICATIONS:

MATERIAL:

MOULDING = GLASS FILLED POLYESTER, UL94V-0
CONTACTS = PHOSPHOR BRONZE

FINISH:

CONTACTS:
05 = 0.75 μ GOLD
22 = 0.75 μ GOLD ON CONTACT AREA,
3.0 μ 90/10 TIN/LEAD ON TAILS

ENVIRONMENTAL:

TEMPERATURE RANGE = -55°C TO +125°C

MECHANICAL:

DURABILITY = 500 OPERATIONS

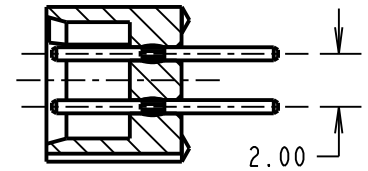
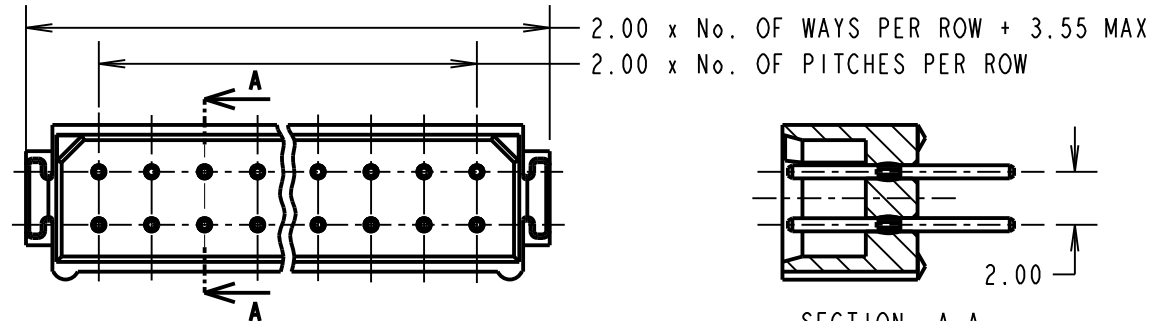
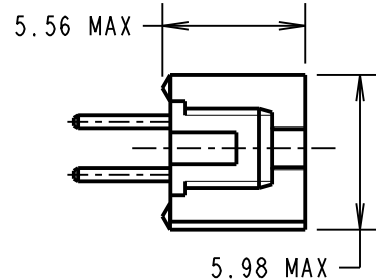
PACKING:

TUBE

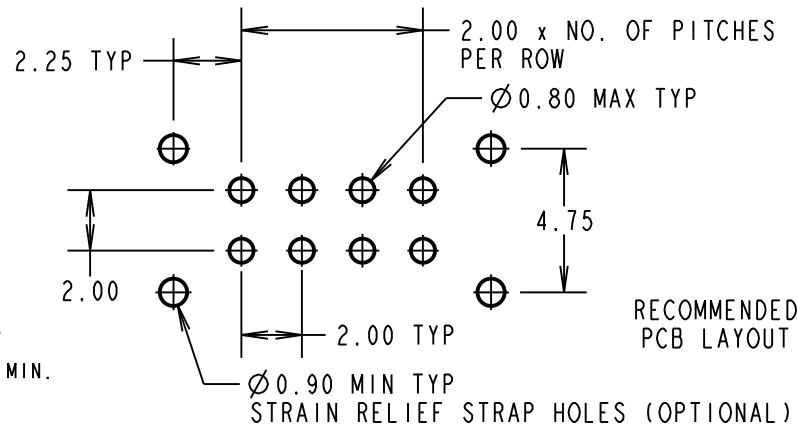
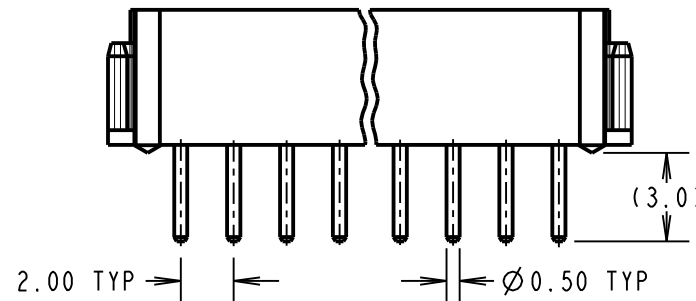
ELECTRICAL:

CURRENT RATING AT 25°C = 3.0A MAX.
CURRENT RATING AT 85°C = 2.2A MAX.
WORKING VOLTAGE = 120V AC/DC
VOLTAGE PROOF = 360V AC/DC
CONTACT RESISTANCE (INITIAL) = 20 m Ω MAX.
CONTACT RESISTANCE (AFTER CONDITIONING) = 25 m Ω MAX.
INSULATION RESISTANCE (INITIAL) = 1000 M Ω MIN.
INSULATION RESISTANCE (AFTER CONDITIONING) = 100 M Ω MIN.

FOR COMPLETE SPECIFICATION, SEE COMPONENT
SPECIFICATION C005XX (LATEST ISSUE)



SECTION A-A



RECOMMENDED
PCB LAYOUT

ORDER CODE:

M80-869XXXX

TOTAL No. OF WAYS
04, 06, 08, 10, 12, 14, 16,
18, 20, 26, 34, 44

FINISH:
05 = GOLD
22 = SELECTIVE GOLD

SB	15	18.07.11	11378
NAME	ISS.	DATE	C/NOTE
APPROVED: S.BENNETT			
CHECKED: M.G.PLESTED			
DRAWN: W. J. BOURNE			
CUSTOMER REF.:			
ASSEMBLY DRG:			

HARWIN

HARWIN USA TEL: 603 893 5376 FAX: 603 893 5396 mis@harwin.com	HARWIN Europe (UK) TEL: 023 9231 4545 FAX: 023 9231 4590 mis@harwin.co.uk	HARWIN Asia TEL: +65 6 779 4909 FAX: +65 6 779 3868 mis@harwin.com.sg
--	--	--

THIS DRAWING AND ANY
INFORMATION OR DESCRIPTIVE
MATTER SET OUT HEREON ARE
CONFIDENTIAL AND COPYRIGHT
PROPERTY OF THE HARWIN
GROUP AND MUST NOT BE
DISCLOSED, LOANED, COPIED
OR USED FOR MANUFACTURING,
TENDERING OR FOR ANY
OTHER PURPOSE WITHOUT
THEIR WRITTEN PERMISSION.

TOLERANCES

X. = ± 1 mm
X.X = ± 0.25 mm
X.XX = ± 0.10 mm
X.XXX = ± 0.01 mm

ANGLES = $\pm 5^\circ$

UNLESS STATED

MATERIAL:

SEE ABOVE

FINISH: SEE ABOVE

S/AREA: mm²

TITLE: DATAMATE 2mm PITCH
VERTICAL PC TAIL DIL PLUG
ASSEMBLY - UNLATCHED

DRAWING NUMBER:

M80-869XXXX

SHT
2
OF
2