

DESIGNED & DIMENSIONED  
IN MILLIMETERS[INCHES]

MCX-J-P-X-ST-SM1-XX ☐

GENDER  
-J: JACK

TYPE  
-P: PCB

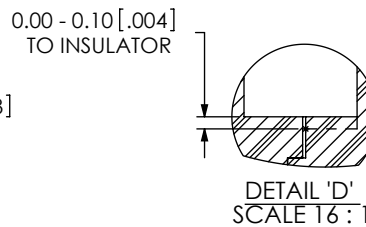
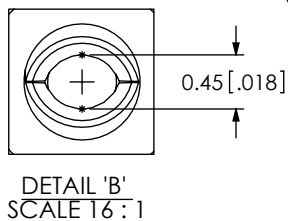
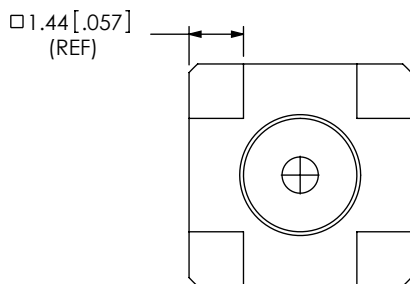
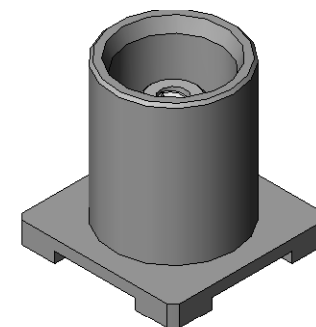
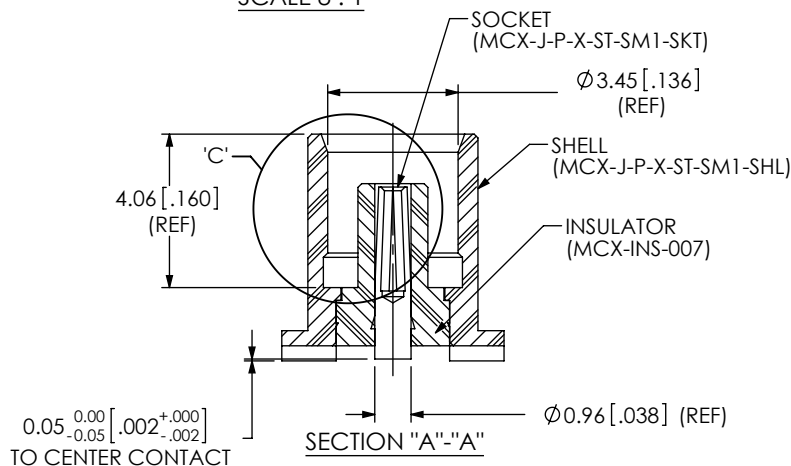
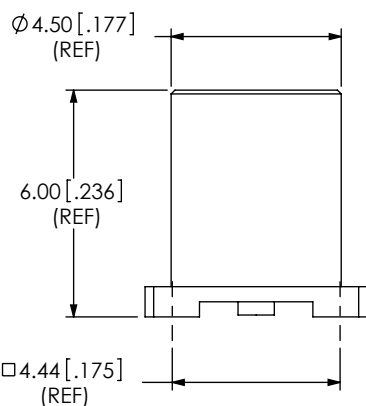
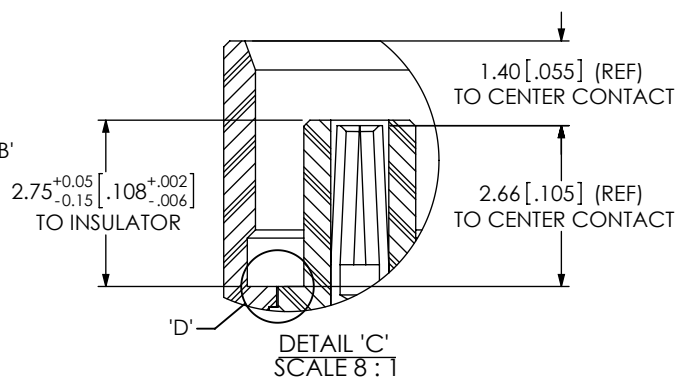
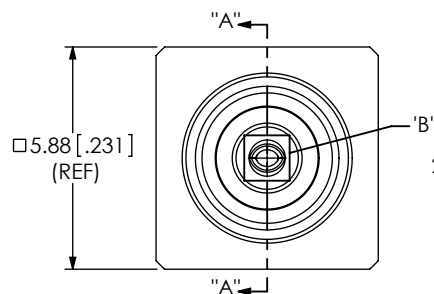
PLATING SPECIFICATION  
-H: HEAVY GOLD  
(SEE TABLE 1)

OPTION

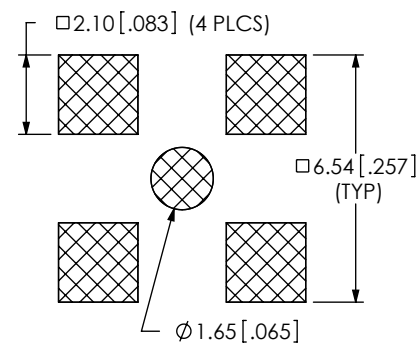
-TR: TAPE & REEL  
(LEAVE BLANK FOR NO  
TAPE AND REEL)

TERMINATION  
-SM1: SURFACE MOUNT

ORIENTATION  
-ST: STRAIGHT



RECOMMENDED PCB LAYOUT



NOTES:

1. REPRESENTS A CRITICAL DIMENSION.
2. PUSHOUT FORCE FOR INSULATOR: 20 N [4.5 LB] MIN.
3. PUSHOUT FORCE FOR CENTER CONTACT: 10 N [2.25 LB] MIN.
4. PARTS TO BE PACKAGED IN TRAYS; IF QUANTITY IS LESS THAN HALF TRAY, PARTS TO BE PACKAGED IN COHESIVE FOAM.
5. RoHS COMPLIANT.

TABLE 1: MATERIAL

SAMTEC PART NUMBER	ITEM	MATERIAL	PLATING - (REFERENCE)
MCX-J-P-X-ST-SM1-SHL	SHELL	BRASS C3604B	0.00013[0.00005] GOLD OVER .00127[0.00050] NICKEL
MCX-INS-007	INSULATOR	PTFE TEFLON (WHITE)	N/A
MCX-J-P-X-ST-SM1-SKT	SOCKET	BeCu C17300	0.00076[0.00030] GOLD OVER .00127[0.00050] NICKEL

F:\DWG\MISC\MKTG\MCX-J-P-X-ST-SM1-XX-MKT.SLDDRW

UNLESS OTHERWISE SPECIFIED,  
DIMENSIONS ARE IN MILLIMETERS.  
TOLERANCES ARE:  
DECIMALS ANGLES  
.X:  $\pm 0.3$  [0.1] 2°  
.XX:  $\pm 0.13$  [0.05]  
.XXX:  $\pm 0.051$  [0.020]

PROPRIETARY NOTE

THIS DOCUMENT CONTAINS INFORMATION  
CONFIDENTIAL AND PROPRIETARY TO  
SAMTEC, INC. AND SHALL NOT BE REPRODUCED  
OR TRANSFERRED TO OTHER DOCUMENTS OR  
DISCLOSED TO OTHERS OR USED FOR ANY  
PURPOSE OTHER THAN THAT WHICH IT WAS  
OBTAINED WITHOUT THE EXPRESSED WRITTEN  
CONSENT OF SAMTEC, INC.

MATERIAL:

SEE TABLE 1

DO NOT SCALE DRAWING

SHEET SCALE: 5:1

DESCRIPTION:

MCX STRAIGHT, SMT JACK- 50 OHM

DWG. NO.

MCX-J-P-X-ST-SM1-XX ☐

BY: R MUSSER

02/06/2008

SHEET 1 OF 1

**samtec**

520 PARK EAST BLVD., NEW ALBANY, IN 47150  
PHONE: 812-944-6733 FAX: 812-948-5047  
e-Mail: info@SAMTEC.com code: 55322