

4

3

2

1

D

D

C

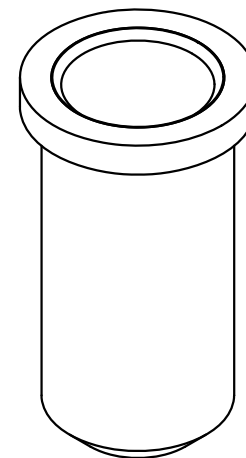
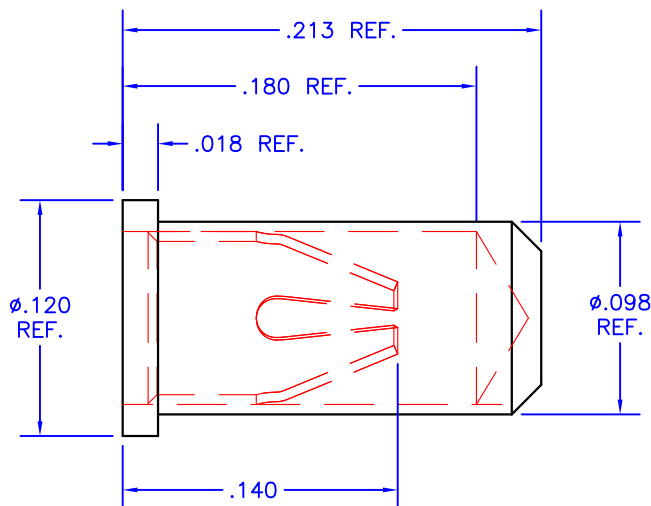
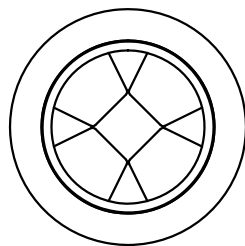
C

B

B

A

A



NOTES:

1. Unless otherwise noted, dimensions are in inches.
2. Shell: 360 brass, half-hard, with 10 μ m gold over nickel
3. Contacts: Beryllium copper with 30 μ m gold over nickel
4. Current rating: 11.2 amps, for 10°C temperature rise.
5. Solder mount in minimum .100 diameter mounting hole.
6. Mill-Max Part No. 0364-0-15-15-13-27-10-0

TOLERANCES - UNLESS
OTHERWISE SPECIFIED

.XX = $\pm .05$ [.002]
.XXX = $\pm .005$ [.0002]
ANG. = $\pm 2^\circ$



TITLE:

PIN RECEPTACLE .048-.064 DIA.

SUBJECT:

MECHANICAL DRAWING

ENGINEER:

D-M

DRAWN BY:

P.ECK

DCI:

12437

SPL:

1

OF

1

MODEL:

MS04

FILENAME:

MS04

REV:

C

DATE:

14NOV12

4

3

2

1