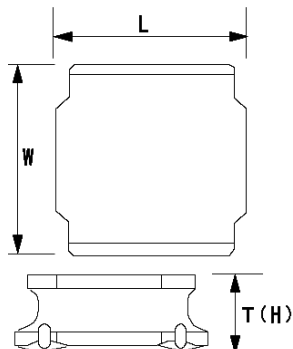


SMD Power Inductors (NR series)

NR3010T1R5N



■ Features

- Item Summary
1.5 μ H($\pm 30\%$), 1200mA, 1300mA
- Lifecycle Stage
Mass Production
- Standard packaging quantity (minimum)
Taping 2000pcs

■ Products characteristics table

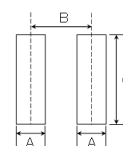
| | |
|---|---------------------------|
| CaseSize (EIA/JIS) | ~/3010 |
| Inductance | 1.5 μ H($\pm 30\%$) |
| Inductance Measuring Frequency | 100kHz |
| Rated Current -Saturation Current | 1200mA |
| Rated Current -Temperature Rise Current | 1300mA |
| DC Resistance (max) | 0.096 Ω |
| Avg. of DC.Resistance | 0.08 Ω |
| Temperature Range | -25°C to 120°C |
| Self-resonant Frequency (min) | 98MHz |
| RoHS Compliance | Yes |
| Halogen Free | Yes |
| Soldering Method | Reflow |

■ External Dimensions

| | |
|---|---------------|
| L | 3mm ± 0.1 |
| W | 3mm ± 0.1 |
| H | 1mm max |

■ Recommended Land Patterns

| | |
|--|--|
| 【推奨ランドパターン】 実装上の注意 ・実装状態を確認の上ご使用くださいようお願いいたします。 ・本製品のはんだ付けはリフローはんだ工法に限りま。 | |
| 【Recommended Land Patterns】 Surface Mounting ・Mounting and soldering conditions should be checked beforehand. ・Applicable soldering process to these products is reflow soldering only. | |



| SMD Power Inductors (NR series/NR series H type/S type/V type) | | | |
|--|-----|-----|-----|
| Type | A | B | C |
| NR 3010, NRH3010, | 0.8 | 2.2 | 2.7 |
| NR 3012, NRH3012, NRV3012, | | | |
| NR 3015, NPS3015 | | | |

unit:mm