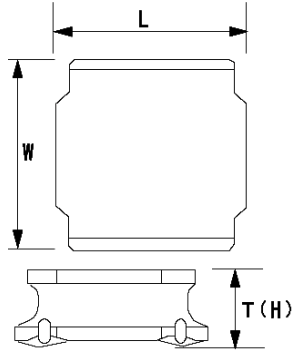


# SMD Power Inductors (NR series)

## NR4018T101M



### ■ Features

- Item Summary  
100  $\mu$ H( $\pm$ 20%), 400mA, 270mA
- Lifecycle Stage  
Mass Production
- Standard packaging quantity (minimum)  
Taping 3500pcs

### ■ Products characteristics table

CaseSize (EIA/JIS)	~/4018
Inductance	100 $\mu$ H( $\pm$ 20%)
Inductance Measuring Frequency	100kHz
Rated Current -Saturation Current	400mA
Rated Current -Temperature Rise Current	270mA
DC Resistance (max)	1.8 $\Omega$
Avg. of DC.Resistance	1.5 $\Omega$
Temperature Range	-25 $^{\circ}$ C to 120 $^{\circ}$ C
Self-resonant Frequency (min)	6.5MHz
RoHS Compliance	Yes
Halogen Free	Yes
Soldering Method	Reflow

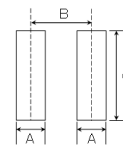
### ■ External Dimensions

L	4mm $\pm$ 0.2
W	4mm $\pm$ 0.2
H	1.8mm max

### ■ Recommended Land Patterns

【推奨ランドパターン】  
 実装上の注意  
 ・実装状態を確認の上ご使用くださいませうお願いたします。  
 ・本製品のはんだ付けはリフローはんだ工法に限りませう。

【Recommended Land Patterns】  
 Surface Mounting  
 ・Mounting and soldering conditions should be checked beforehand.  
 ・Applicable soldering process to these products is reflow soldering only.



SMD Power Inductors (NR series/NR series/NR series H type/S type/V type)

Type	A	B	C
NR 4010, NRS4010,			
NR 4012, NRS4012,	1.2	2.8	3.7
NR 4018, NRS4018			

unit:mm