

FEATURES

- Available with or without Flared Entry
- Choice of three board thicknesses
- Choice of three materials
- Choice of eight finishes
- Spring design to clamp PC boards

Meets the requirements of drawings 85020 and 85021 for flared entry, Defense Supply Center, Columbus



Series 35-7 PCB-Tainer

DSCC 85020 & 85021

APPLICATIONS

- Where metal guides are required
- Moderate heat transfer and vibration
- Electrically and thermally conductive
- Install with rivets, screws or adhesives

For mechanical and thermal performance data see the Technical Applications section pages 77-94

MATERIAL

.005(.13) thick Beryllium Copper or Stainless Steel

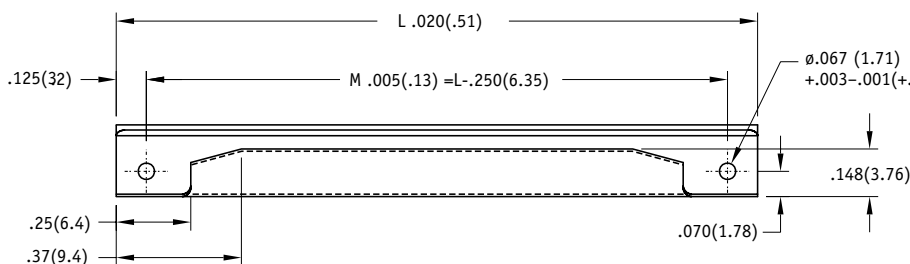
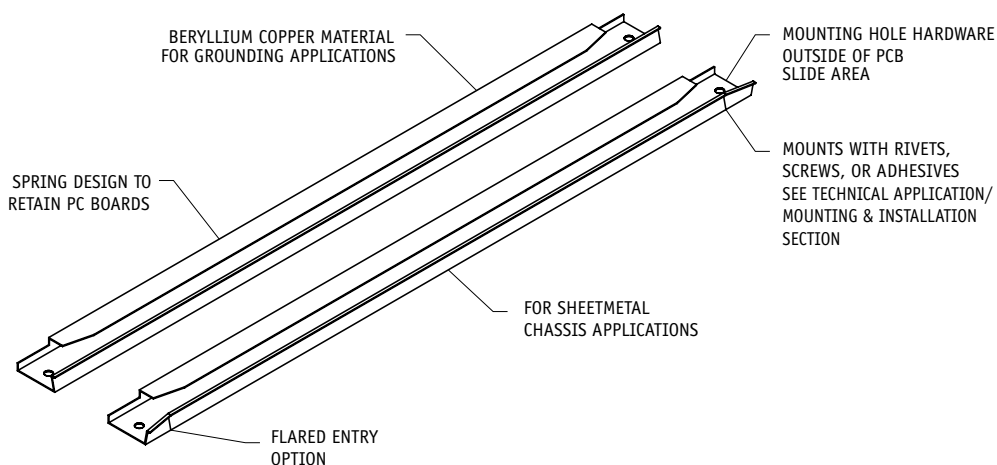
WEIGHT

.015 oz/in
(0.17 gm/cm)
Either Material

SHOCK & VIBRATION APPLICATIONS

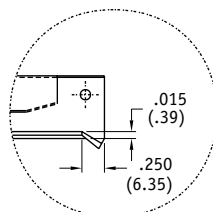
LOW HEAT DISSIPATION

.125(3.18) IN HEIGHT

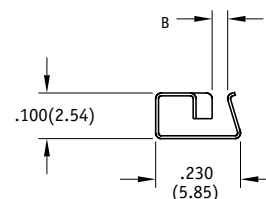


NOTE ON DIMENSIONS:
ENGLISH LISTED FIRST
FOLLOWED BY METRIC
IN PARENTHESES

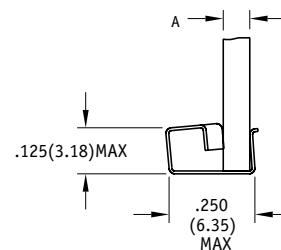
TOLERANCES:
UNLESS OTHERWISE SPECIFIED
.XXX(.XX)=.01(.25)
.XX (.X) =.02(.5)



FLARED ENTRY OPTION



RELAXED



WITH BOARD
INSERTED

① FINISH TABLE

CONTACT FACTORY FOR OTHER FINISHES

DASH #	FINISH (see pg.9 for RoHS Compliance)
NONE	SILVER PLATE PER QQ-S-365, TYPE III, GRADE A
-1	NONE
-2	EBANOL PER MIL-F-495 FOR BERYLLIUM COPPER
-4	COPPER PLATE PER MIL-C-14550, CLASS 2
-5	GOLD PLATE PER MIL-G-45204, TYPE 1, CLASS 1
-6	NICKEL PLATE PER QQ-N-290, CLASS 1, GRADE G, BRIGHT
-7	ZINC PLATE CLEAR CHROMATE, PER ASTM-B-633, Fe/Zn 8
-8	ZINC PLATE YELLOW CHROMATE, PER ASTM-B-633 Fe/Zn 8

② MATERIALS TABLE

CODE LETTER	MATERIAL
B	BERYLLIUM COPPER, 1/4H PER, ASTM-B-194
BH	BERYLLIUM COPPER, 1/4 HT PER QQ-C-533, HEAT TREATED
CR	STAINLESS STEEL, TYPE 301 COND 1/4 H PER AMS 5517

**FOR MECHANICAL AND
THERMAL PERFORMANCE
SEE THE TECHNICAL APPLICATIONS
SECTION PAGES 77-94**

③ DIMENSION TABLE

DASH #	A BOARD THICKNESS	B RELAXED (+.000/-0.015)
-1	.031(0.79)	.025(0.64)
-2	.063(1.60)	.055(1.40)
-3	.093(2.36)	.085(2.16)

Part Number Code

Series 35-7 PCB-Tainer

35 x -1x -x -x -x

Flared Entry

Flared Entry: _____ F

None: _____ [Blank]

Material

Select Code Letter from Material Table ②: _____

Board Thickness

Select from Board Thickness Table ③: _____

Length

In 1/2" increments: _____ -2 -1" thru -12 -6"

In 12.7mm increments: _____ -4 - 25.4mm thru -12 -152.4mm

Finish

Select from Finish Table ①: _____
No dash number required for CR material. Stainless steel parts are passivated only.

Part Number Code example: 35-7B-3-12-6

35 Series PCB-Tainer, Beryllium Copper, .093(2.36) board thickness,
6.00 in(152.4mm) long, Nickel Plate finish.