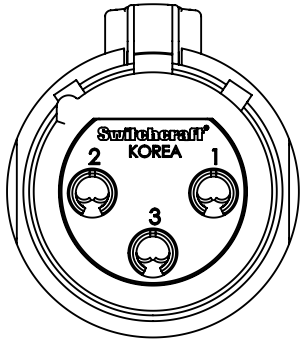
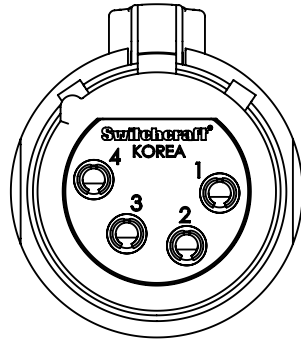


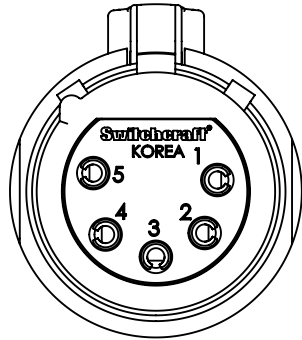
PART NUMBER	CONTACT PINS		HOUSING AND LATCH FINISH	INSULATOR COLOR
	QTY	FINISH		
QT3FZ	3	SILVER	NICKEL	GREEN
QT3FAUZ	3	GOLD	NICKEL	GREEN
QT3FBZ	3	SILVER	BLACK CHROME	BLACK
QT3FBAUZ	3	GOLD	BLACK CHROME	BLACK
QT4FZ	4	SILVER	NICKEL	GREEN
QT4FAUZ	4	GOLD	NICKEL	GREEN
QT4FBZ	4	SILVER	BLACK CHROME	BLACK
QT4FBAUZ	4	GOLD	BLACK CHROME	BLACK
QT5FZ	5	SILVER	NICKEL	GREEN
QT5FAUZ	5	GOLD	NICKEL	GREEN
QT5FBZ	5	SILVER	BLACK CHROME	BLACK
QT5FBAUZ	5	GOLD	BLACK CHROME	BLACK
QT6FZ	6	SILVER	NICKEL	GREEN
QT6FAUZ	6	GOLD	NICKEL	GREEN
QT6FBZ	6	SILVER	BLACK CHROME	BLACK
QT6FBAUZ	6	GOLD	BLACK CHROME	BLACK
QT7FZ	7	SILVER	NICKEL	GREEN
QT7FAUZ	7	GOLD	NICKEL	GREEN
QT7FBZ	7	SILVER	BLACK CHROME	BLACK
QT7FBAUZ	7	GOLD	BLACK CHROME	BLACK



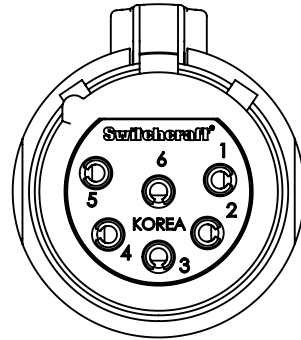
3 PIN



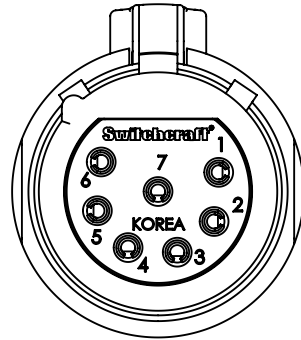
4 PIN



5 PIN

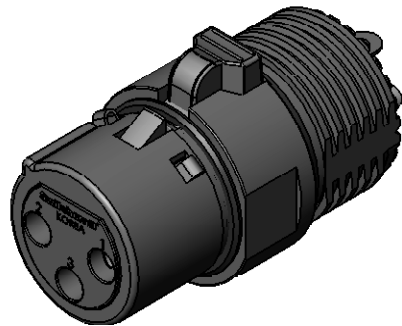
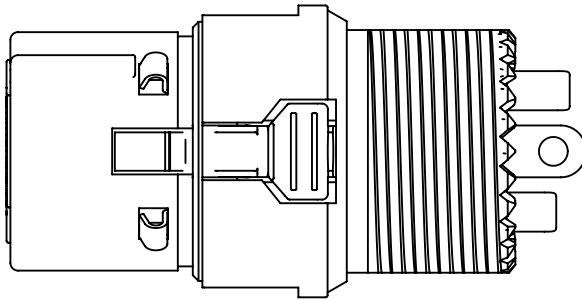


6 PIN

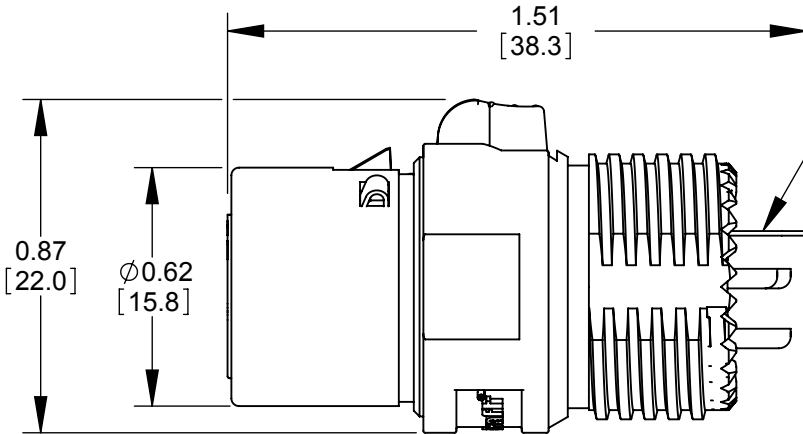
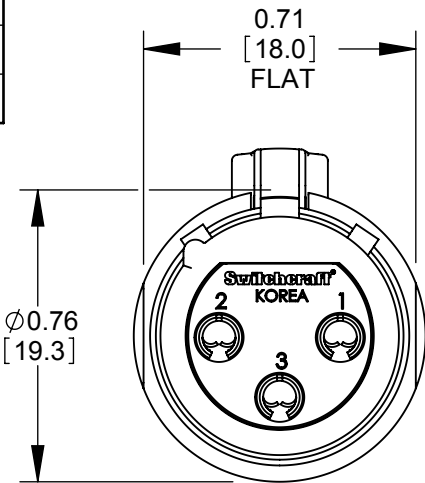


7 PIN

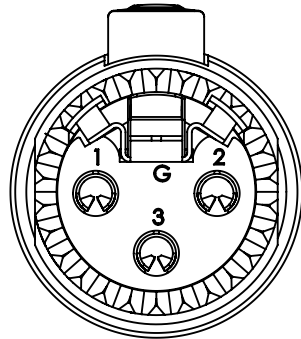
CONTACT PINS AS VIEWED FACING FEMALE CONNECTOR



QT3FZ SHOWN



GROUND
TERMINAL



CUSTOMER DRAWING

- NOTES:
- MATERIALS:
HOUSING - ZINC ALLOY
LATCH - ZINC ALLOY
INSULATOR - THERMOPLASTIC
GROUND TERMINAL - SPECIAL COPPER ALLOY
SOCKET CONTACTS - SPECIAL COPPER ALLOY
 - THESE PRODUCTS ARE RoHS COMPLIANT.

					<div>★ STAR SYMBOL DENOTES CRITICAL DIMENSION</div> <div>UNLESS OTHERWISE SPECIFIED</div> <div>1. ALL DIMENSIONS IN INCHES - TWO PLACE DECIMALS ±0.01 - THREE PLACE DECIMALS ±0.005 - ANGLES ±1° - ALL DIA. CONCENTRIC WITHIN 0.005 T.I.R.</div> <div>2. FEATURES ON THE SAME CENTERLINE MUST BE ALIGNED WITHIN ±0.002</div> <div>3. REMOVE ALL BURRS</div> <div>DO NOT SCALE DRAWING</div>	THIS DRAWING DESCRIBES A DESIGN CONSIDERED PROPRIETARY IN NATURE, DEVELOPED AND MANUFACTURED BY SWITCHCRAFT INC. AND IS RELEASED ON A CONFIDENTIAL BASIS FOR IDENTIFICATION PURPOSES ONLY.							
						SIZE	WIDTH		MULT	LBS/M	TEMPER		
						FINISH SPEC No.				MATERIAL SPEC No.			
D	25891	9-9-08	RS	TJK		FIRST USED ON AAA3FZ			SCALE 2:1		Switchcraft®		
C	24940	3-10-05	JL	TJK		DATE DRAWN	BY	CHKD	APVD				
B	24552	10-10-03	JL	BRH		03-07-03	BRH	BRH 8-11-03	BRH 8-11-03	SHEET 1 OF 1			
A	24446	8-11-03	JL	BRH		NAME						PART No.	REV
REV	ECO NUMBER	DATE	BY	APVD		FEMALE QT CONNECTOR, RoHS						QT_FZ SERIES	D
REVISIONS													