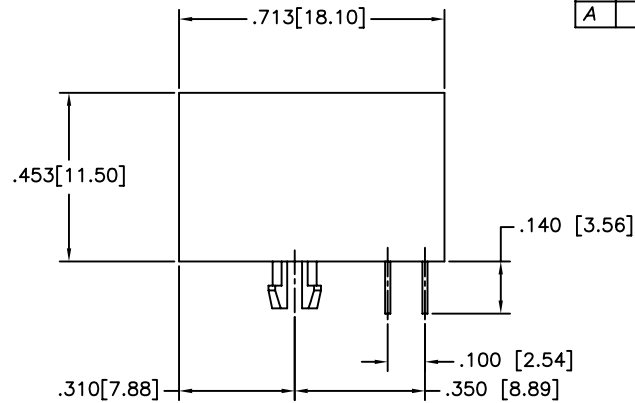
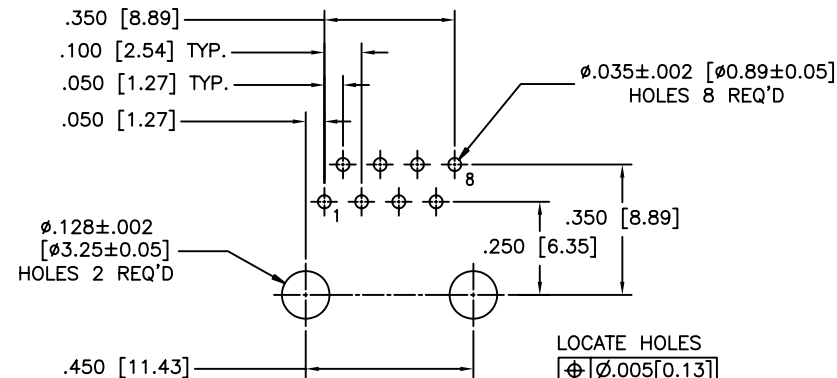


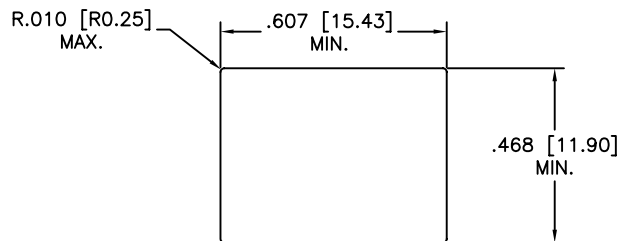
FRONT VIEW



SIDE VIEW



RECOMMENDED P.C.B. LAYOUT
(COMPONENT SIDE OF BOARD)



RECOMMENDED PANEL CUTOUT

REVISIONS				
SYM	ZONE	ECN, ERN NO.	DATE	APPRD.
A		PROPOSAL	25/01/06	LCHAN

MATERIALS:

PLASTIC HOUSING: ENGINEERING THERMOPLASTIC
FLAMMABILITY RATING UL94V-0.

CONTACTS:

PHOSPHOR BRONZE
PLATING: REFER PART NUMBER FOR GOLD
THICKNESS ON MATING SURFACES.
50 μ " [1.27 MICRONS]
MIN. NICKEL UNDERPLATE.
100 μ " [2.54 MICRONS]
MIN. MATTE TIN ON CONTACT TAILS.

PART NUMBER: RJE05-188-0X10

GOLD PLATING

- 1 = 6 μ INCH
- 2 = 15 μ INCH
- 3 = 30 μ INCH
- 4 = 50 μ INCH

THIS DOCUMENT CONTAINS PROPRIETARY INFORMATION AND SUCH INFORMATION
MAY NOT BE DISCLOSED TO OTHERS FOR ANY PURPOSE OR USED FOR MANUFACTURING
PURPOSES WITHOUT WRITTEN PERMISSION FROM AMPHENOL CANADA CORP.

DRAWN <i>Chigow</i>	DATE 25/01/06	Amphenol Canada Corp.		
DESIGNED				
CHECKED <i>LCHAN</i>	25/01/06	TITLE RJE05 SERIES MODULAR JACK, 8 POSITION, 8 CONTACTS, UNSHIELDED, ULTRA LOW PROFILE-RoHS COMPLIANT		
I. E. APPRD.				
Q. A. APPRD.				
DWG. APPRD.				
ENG. REL. NO.				
REF.				
DIMENSIONS ARE IN mm	CODE ID. NO. 03554	DWG	DRAWING NO. P-RJE05-188-0X10	REV. A
SCALE	WT. -----	SURF. -----	SHEET 1 OF 1	