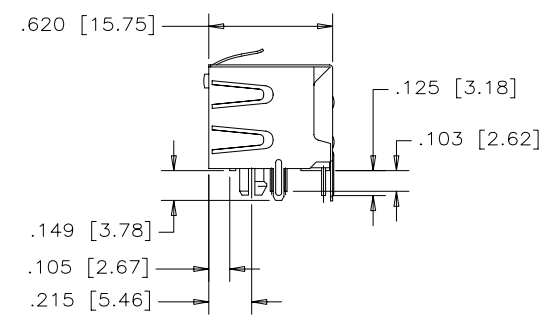
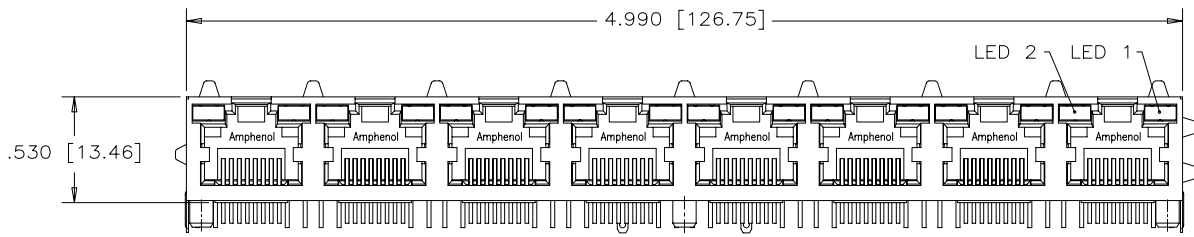
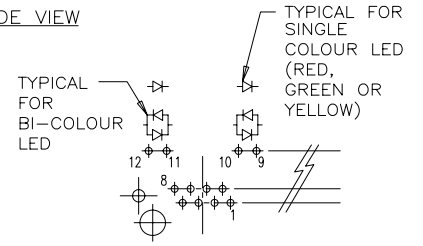


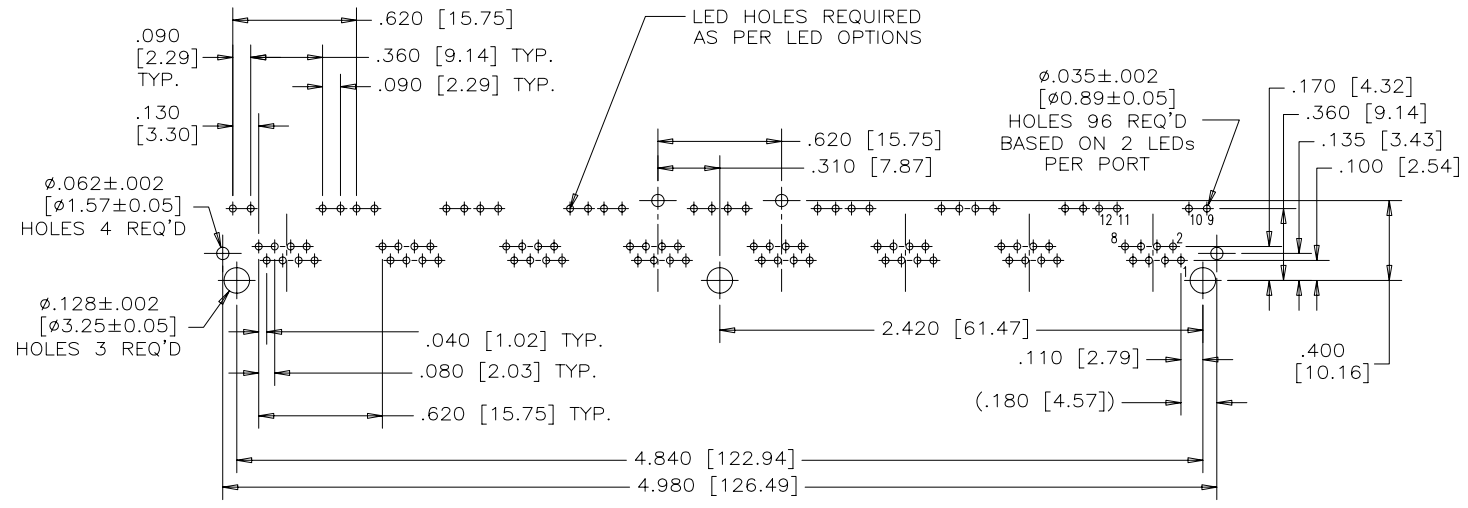
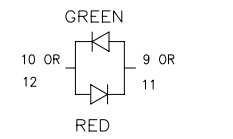
REVISIONS			
SYM	ZONE	ECN, ERN NO.	DATE
A		PROPOSAL	SEPT20/04
			K.L.



SIDE VIEW

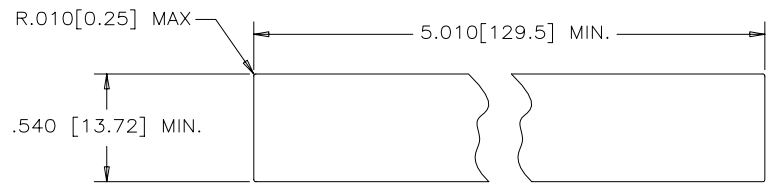


LED SCHEMATIC



RECOMMENDED P.C.B. LAYOUT  
(COMPONENT SIDE OF BOARD)

LOCATE HOLES  
[Ø.005[0.13]]  
POSITION DIMENSIONS  
ARE BASIC



RECOMMENDED PANEL CUTOUT

PART NUMBER: RJHSE-538X-08

REFER TO LED OPTIONS DRAWING  
FOR ORDERING CODES

MATERIALS:

PLASTIC HOUSING: HIGH TEMPERATURE THERMOPLASTIC POLYESTER  
FLAMMABILITY RATING UL 94V-0

CONTACTS:  
PHOSPHOR BRONZE  
PLATING: 50 µ" [1.27 MICRONS]  
MIN. NICKEL.  
50 µ" [1.27 MICRONS]  
MIN. GOLD ON MATING SURFACES.  
100 µ" [2.54 MICRONS]  
MIN. MATTE TIN ON CONTACT TAILS.

SHIELD: COPPER ALLOY  
PLATING: NICKEL

DRAWN	L.CHAN	DATE	SEPT21/04
DESIGNED			
CHECKED	K.LAMBIE	DATE	SEPT21/04
I. E. APPRD.			
Q. A. APPRD.			
DWG. APPRD.			
ENG. REL. NO.			
REF.	EAR 12481		
DIMENSIONS ARE IN	CODE ID. NO.		
INCHES [mm]	03554		

Amphenol Canada Corp.

TITLE  
RJHSE SERIES, 8 PORT, MODULAR JACK,  
8 POSITION, 8 CONTACTS,  
SHIELDED, WITH LED'S - RoHS COMPLIANT

DWG	DRAWING NO.	REV.
	P-RJHSE-538X-08	A
SCALE	WT.	SURF.
		SHEET 1 of 1

THIS DOCUMENT CONTAINS PROPRIETARY INFORMATION AND SUCH INFORMATION  
MAY NOT BE DISCLOSED TO OTHERS FOR ANY PURPOSE OR USED FOR MANUFACTURING  
PURPOSES WITHOUT WRITTEN PERMISSION FROM AMPHENOL CANADA CORP.