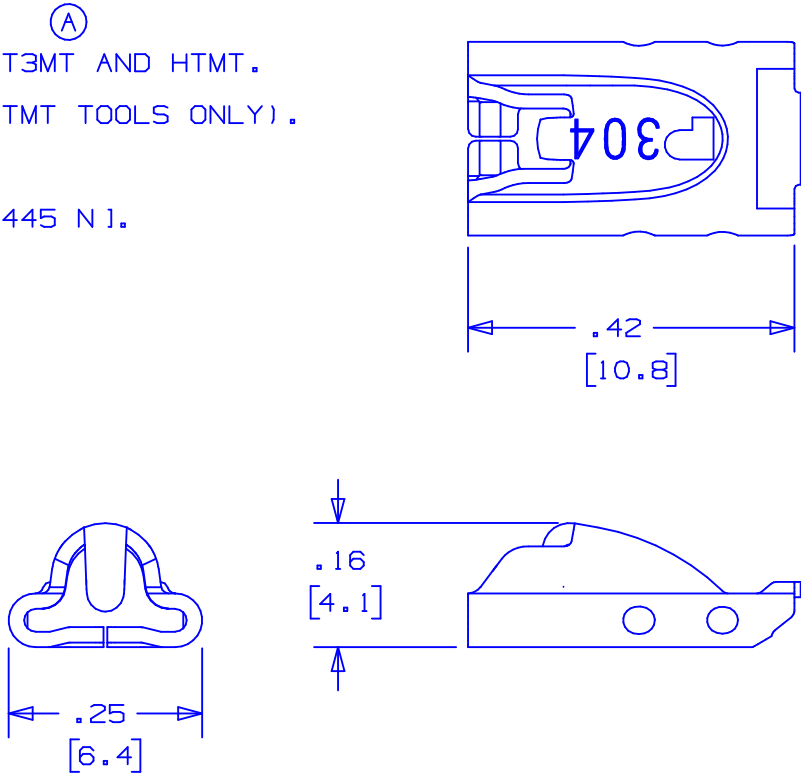


NOTES:

1. TO BE USED WITH PANDUIT STAINLESS STEEL BANDING MBS-MR & MBS-TLR.
2. APPLICATION TOOL: GS4MT, PPTMT, ST2MT, ST3MT AND HTMT.
3. TOOL TENSION SETTING: 1 TO 4 (GS4MT & PPTMT TOOLS ONLY).
4. DIMENSIONS IN [     ] ARE MILLIMETERS.
5. MINIMUM LOOP TENSILE STRENGTH: 100 lbs.[ 445 N].
6. TOLERANCES: .XXX = ±.010 [ .254 ]  
.XX = ±.02 [ .508 ]  
.X = ±.03 [ .762 ]  
ANGLES = ±2°



								CAD FILENAME/LAYERS				S41145_01			
								PANDUIT					CORP. TINLEY PARK, ILLINOIS		
								METAL LOCKING TIE HEAD							
								STANDARD PART#					MTHS-C		
								UNLESS OTHERWISE SPECIFIED, DIMENSIONAL TOLERANCES ARE:				UNLESS OTHERWISE SPECIFIED, ALL DIMENSIONS ARE GIVEN			
								(.X) ± x                      (.XXX) ± x				IN INCHES, THIRD ANGLE PROJECTION.			
								(.XX) ± x                    ANGLES ± x							
01	10/03	BRH	DPN	Ⓐ ADDED ST3MT TO APPLICATION TOOL NOTE		11162	CCH	JJB	DRAWN BY JAMB		MAT'L:  304 STAINLESS STEEL		SCALE 4x		
00	8/03	JAMB	DPN	RELEASED		10938	CCH	JJB	DATE 8-13-03				DRAWING NO.		DWG
REV	DATE	BY	CHK	DESCRIPTION		ECN #	PM	CUST	CHK'D DPN				S41145		A SIZE