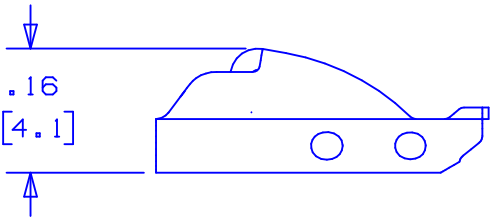
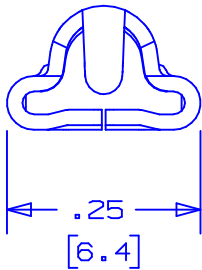
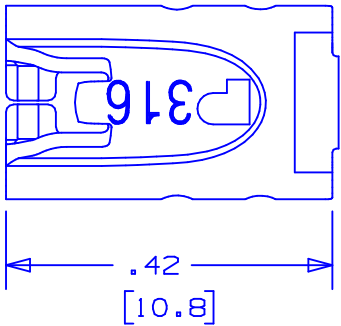


NOTES:

1. TO BE USED WITH PANDUIT STAINLESS STEEL
BANDING MBS-MR316 & MBS-TLR316.
2. APPLICATION TOOL: GS4MT, PPTMT, ST2MT, ST3MT, AND HTMT.
3. TOOL TENSION SETTING: 1 TO 4 (GS4MT & PPTMT TOOLS ONLY).
4. DIMENSIONS IN [] ARE MILLIMETERS.
5. MINIMUM LOOP TENSILE STRENGTH: 100 lbs.[445 N].
6. TOLERANCES: .XXX = ±.010 [.254]
.XX = ±.02 [.508]
.X = ±.03 [.762]
ANGLES = ±2°

Ⓐ



								CAD FILENAME/LAYERS				S41146_01		
								PANDUIT					CORP. TINLEY PARK, ILLINOIS	
								METAL LOCKING TIE HEAD						
								STANDARD PART #MTHS-C316						
								UNLESS OTHERWISE SPECIFIED, DIMENSIONAL TOLERANCES ARE: (.X) ± x (.XXX) ± x (.XX) ± x ANGLES ± x			UNLESS OTHERWISE SPECIFIED, ALL DIMENSIONS ARE GIVEN IN INCHES, THIRD ANGLE PROJECTION.			
01	10/03	BRH	DPN	Ⓐ ADDED ST3MT TO APPLICATION TOOL NOTE		11162	CCH	JJB	DRAWN BY JAMB	MAT'L: 316 STAINLESS STEEL		SCALE 4x		
00	8/03	JAMB	DPN	RELEASED		10938	CCH	JJB	DATE 8-12-03			DRAWING NO. S41146		DWG A SIZE
REV	DATE	BY	CHK	DESCRIPTION		ECN #	PM	CUST	CHK'D DPN					