

Customer Information Sheet

DRAWING No.: S9101-46

SHEET 2 OF 2

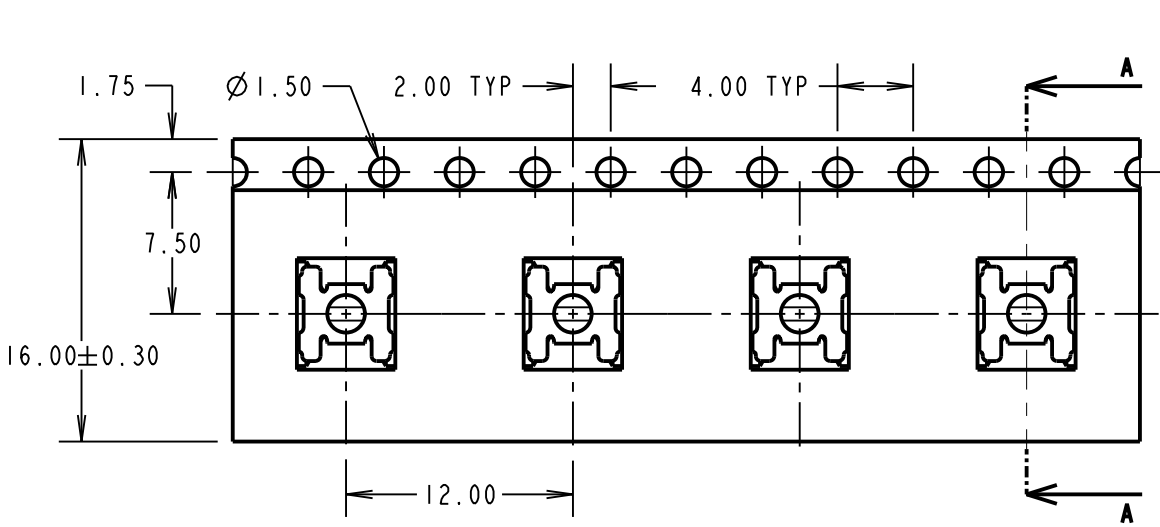
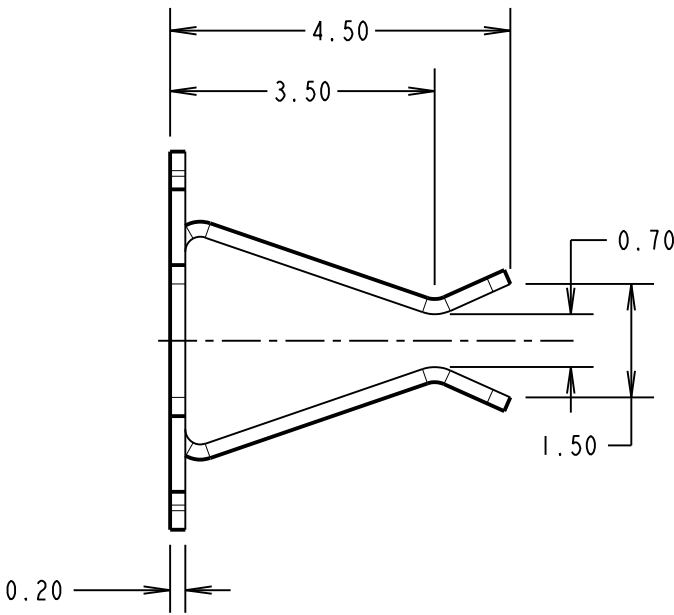
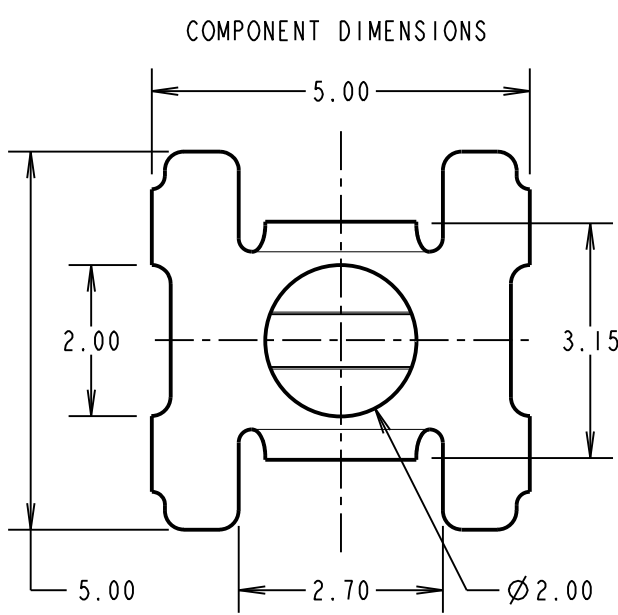
IF IN DOUBT - ASK

(C)

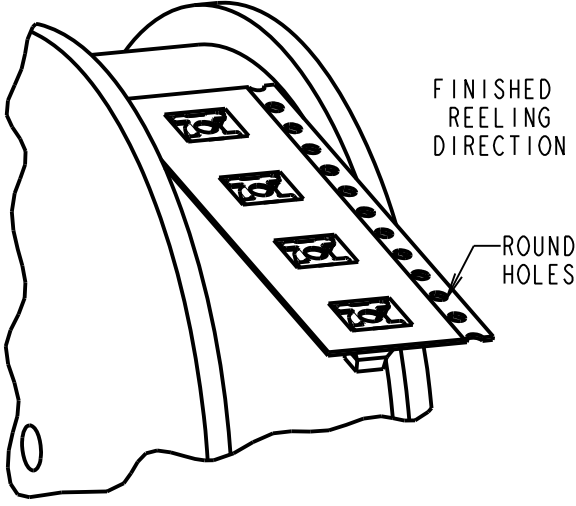
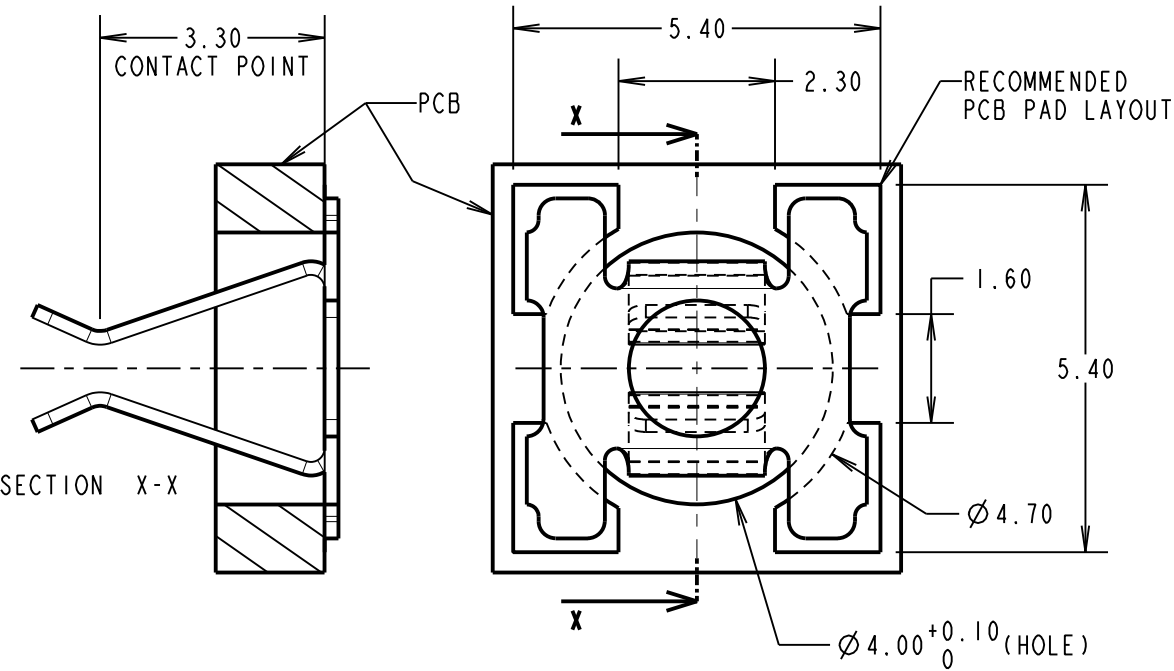
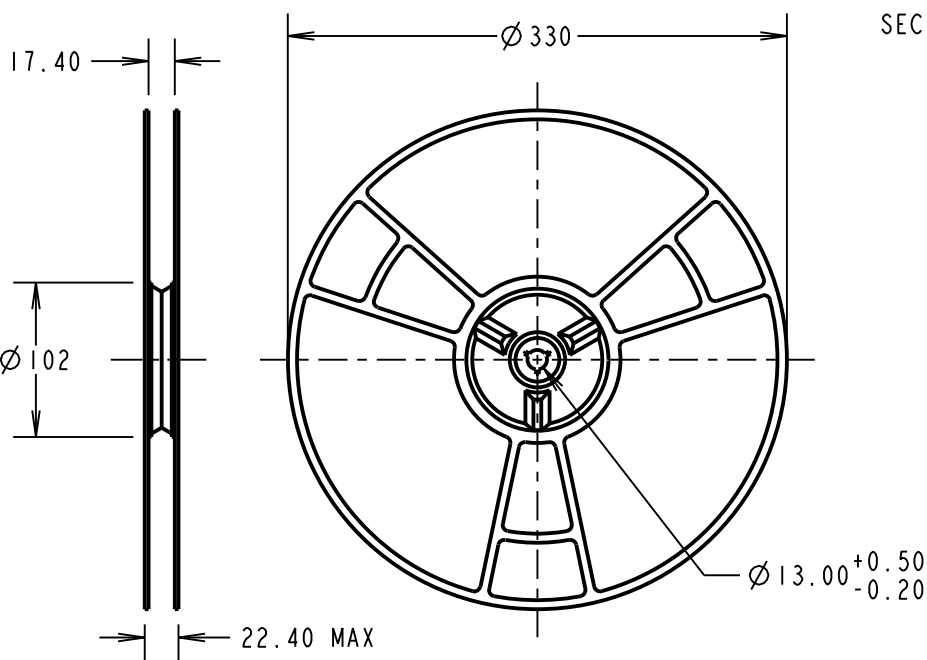
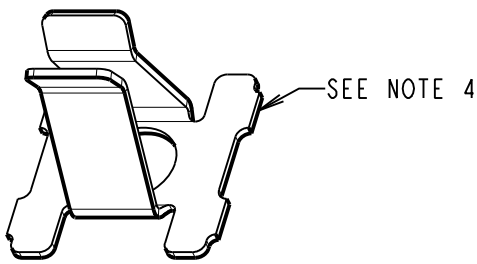
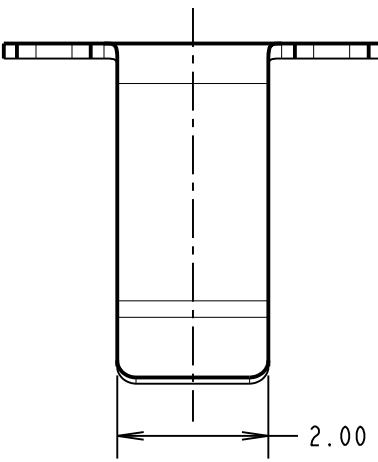
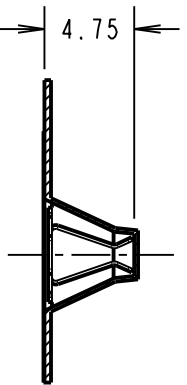
NOT TO SCALE

THIRD ANGLE PROJECTION

ALL DIMENSIONS IN mm



SECTION A-A



COMPONENT SPECIFICATION:
MATERIAL:
PHOSPHOR BRONZE
FINISH:
4μ MIN 100% TIN OVER 2μ NICKEL
ELECTRICAL:
CURRENT RATING = 9A MAX WITH A Ø1.10mm PIN
CONTACT RESISTANCE (BEFORE CYCLING) = 2.67mΩ
CONTACT RESISTANCE (50 CYCLES) = 2.67mΩ
DURABILITY = 100 OPERATIONS
ENVIRONMENTAL:
OPERATING TEMPERATURE = -40°C TO +105°C
MAX INSERTION FORCE WITH Ø1.10mm PIN = 2.8N
MAX INSERTION FORCE WITH Ø1.80mm PIN = 4.5N
MIN WITHDRAWAL FORCE WITH Ø1.10mm PIN = 0.3N
MIN WITHDRAWAL FORCE WITH Ø1.80mm PIN = 0.5N
FOR COMPLETE SPECIFICATION, SEE HARWIN
TEST REPORT SUMMARY HT007XX (LATEST ISSUE).

- NOTES:
1. QUANTITY OF COMPONENTS PER REEL = 800.
 2. TAPE MUST HAVE A MINIMUM OF 400mm LEADER AND A MINIMUM OF 160mm TRAILER.
 3. THIS PRODUCT IS TAPED AND REELED IN ACCORDANCE WITH EIA-481-2 (ELECTRONICS INDUSTRIES ASSOCIATION).
 4. MAX PERMISSIBLE BURR AFTER CROP IS 0.05mm AND SHOULD BE ON NOTED FACE.
 5. RECOMMENDED MINIMUM PIN SIZE IS Ø1.10 OR 1.10 SQUARE. RECOMMENDED MAXIMUM PIN SIZE IS Ø1.80 OR 1.40 SQUARE.

HARWIN
www.harwin.com
technical@harwin.com

THIS DRAWING AND ANY INFORMATION OR DESCRIPTIVE MATTER SET OUT HEREON ARE CONFIDENTIAL AND COPYRIGHT PROPERTY OF THE HARWIN GROUP AND MUST NOT BE DISCLOSED, LOANED, COPIED OR USED FOR MANUFACTURING, TENDERING OR FOR ANY OTHER PURPOSE WITHOUT THEIR WRITTEN PERMISSION.

TOLERANCES
X. = ±1mm
X.X = ±0.25mm
X.XX = ±0.10mm
X.XXX = ±0.01mm
ANGLES = ±5°
UNLESS STATED

MATERIAL:
SEE ABOVE
FINISH:
S/AREA: mm²

TITLE:
SMT CONTACT CLIP
IN TAPE & REEL
DRAWING NUMBER:
S9101-46R
SHT 2 OF 2

SB	3	07.12.11	11580
NAME	ISS.	DATE	C/NOTE
APPROVED: S.BENNETT			
CHECKED: S.FLOWER			
DRAWN: S.FLOWER			
CUSTOMER REF.:			
ASSEMBLY DRG:			