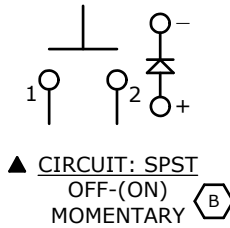


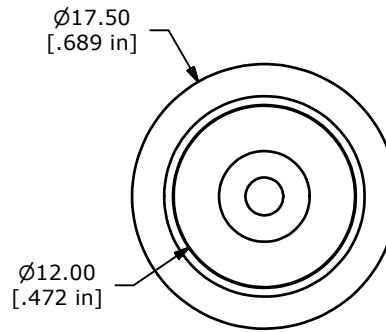
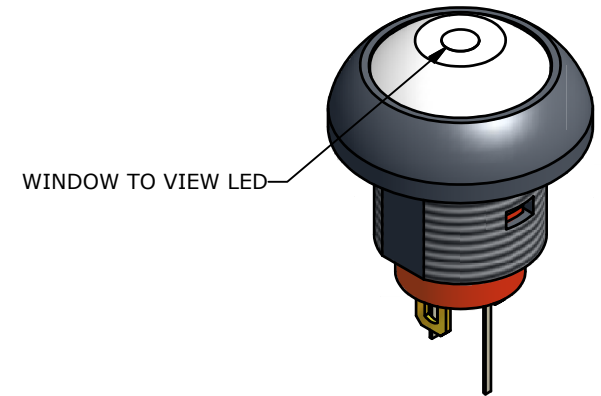
PANEL MOUNTING



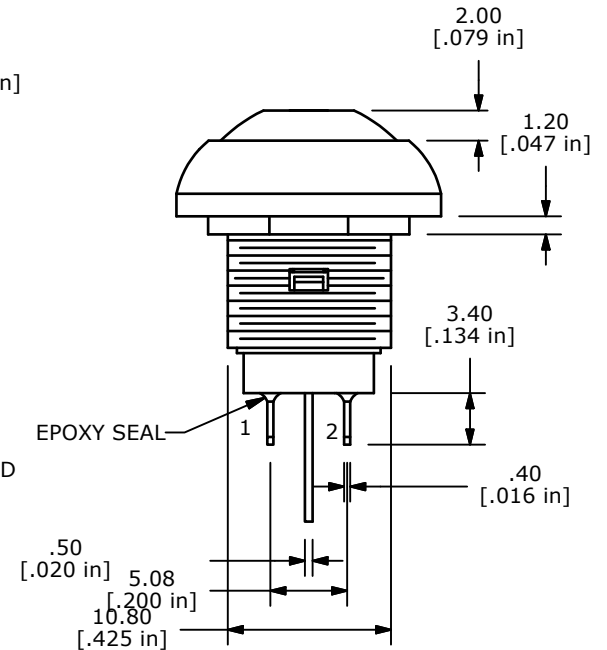
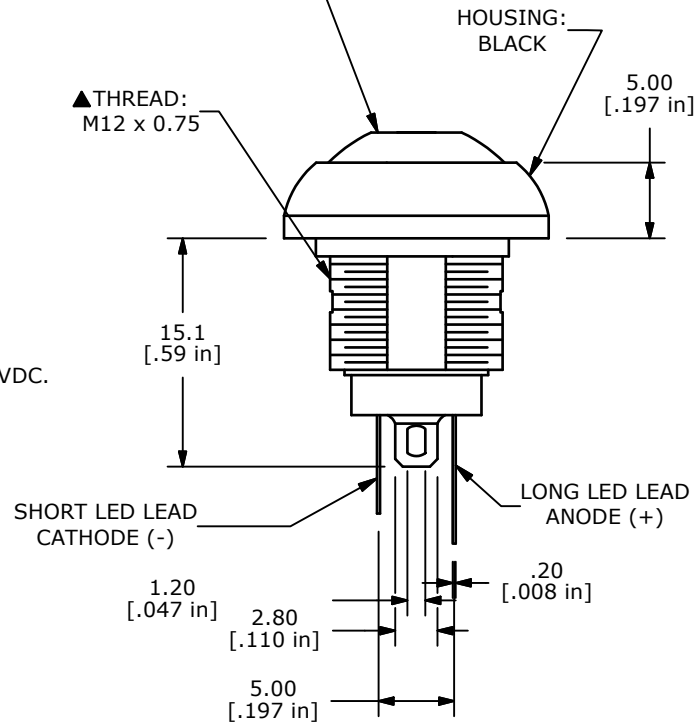
▲ LED SPECIFICATION		
Column 1	Column 2	Column 3
LED PARAMETER	UNITS	BLUE
FORWARD CURRENT	mA	20
FORWARD VOLTAGE @ 20 mA	V	2.8-3.2
LUMINOUS INTENSITY	mcd	28-70

## NOTE:

1. ALL DIMENSIONS IN MM [INCH]
2. GENERAL TOLERANCE: X.X=±0.4  
X.XX=±0.25
3. TERMINAL NUMBERS FOR REF ONLY
4. CIRCUIT: SPST OFF-MOMENTARY ON
5. CONTACT MATERIAL: Gold over SILVER
- ▲ 6. RATING: 125mA @ 125 VAC  
100mA @ 50 VDC
- ▲ 7. ELECTRIC LIFE: 500,000 CYCLES AT FULL LOAD
8. CONTACT RESISTANCE: 50 milli-OHM max. (INITIAL)
9. INSULATION RESISTANCE: 1,000 MEGA-OHM min. @ 500VDC.
10. DIELECTRIC STRENGTH: 1,000 VAC rms.
11. OPERATING FORCE: 350 gf +/- 150 gf
12. OPERATING TEMPERATURE: -30°C TO +85°C.
13. CONTACT BOUNCE: 10ms MAX.
- ▲ 14. TRAVEL: 1.5mm
15. PANEL THICKNESS RANGE: 1.5 - 4.0 mm.
16. ▲ DENOTES CRITICAL PARAMETER.
17. 2002/95/EC (ROHS) COMPLIANT
18. MAX. MOUNTING TORQUE: 1.5 Nm APPLIED TO THE NUT
19. HARDWARE INCLUDED:  
(1) T081101 LOCK WASHER  
(1) T081102 HEX NUT  
(1) T081100 RUBBER WASHER
20. SEAL RATING: IP65

▲ ACTUATOR:  
COLOR WHITEHOUSING:  
BLACK▲ THREAD:  
M12 x 0.75SHORT LED LEAD  
CATHODE (-)LONG LED LEAD  
ANODE (+)

WINDOW TO VIEW LED



EPOXY SEAL

C	19457	CORRECT NOTE / DRAWING CLEAN UP	11/22/10	BMA
B	19358	MISC. DRAWING UPDATES	10/26/10	BMA
A	18443	Release for Production	3/24/09	BLR
REV	PCR NO	DESCRIPTION	DATE	BY

THE INFORMATION CONTAINED IN THIS DOCUMENT IS PROPRIETARY  
TO E-SWITCH AND IS NOT TO BE COPIED OR TRANSFERRED



TITLE RP81xxB2M1CEBLKWHTBLU

SCALE 2 : 1

DATE 3/24/2009

DR BLR

DWG ST081037

REV C