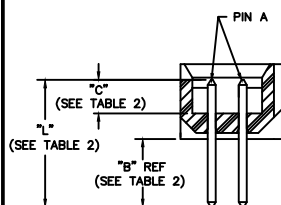
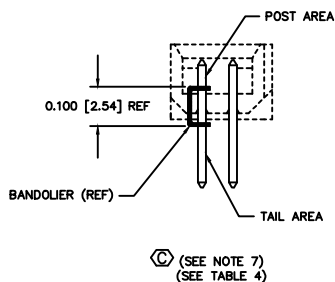


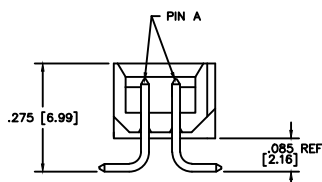
IN PROCESS 3 (-T PLATING ONLY)

TABLE 4 (-T PLATING ONLY)		
LEAD STYLE	NUMBER OF BAND MARKS ALLOWED IN THE POST AREA	
	PIN A	PIN B
*-01	0	0
*-01-RA	0	0
*-01-SM	0	0
*-02	0	0
*-02-RA	0	0
*-02-SM	0	0

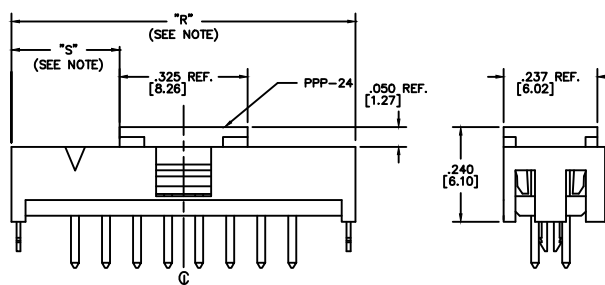
* PINS TO BE FLIPPED OPPOSITE OF SELECTIVE PLATING BEFORE BEING INSERTED



IN PROCESS 1



IN PROCESS 2



NOTE: "R" = USED MEASURED DIMENSION (REF)
"S" = $\{("R" - .325 [8.26]) / 2\} \pm .020 [.51]$

FIG. 4

-P: PICK AND PLACE PAD

3 POSITION MIN.

DIFFERENT AS SHOWN OTHERWISE SAME AS FIG. 1

PROPRIETARY NOTE

THIS DOCUMENT CONTAINS INFORMATION CONFIDENTIAL AND PROPRIETARY TO SAMTEC INC. AND SHALL NOT BE REPRODUCED OR TRANSFERRED TO OTHER DOCUMENTS OR DISCLOSED TO OTHERS OR USED FOR ANY PURPOSE OTHER THAN THAT FOR WHICH IT WAS OBTAINED WITHOUT THE EXPRESSED WRITTEN CONSENT OF SAMTEC INC.

UNLESS OTHERWISE NOTED
DIMENSIONS ARE IN INCHES

TOLERANCES ARE:

ONE PLACE DECIMALS $\pm .1$ [2.5] THREE PLACE DECIMALS $\pm .005$ [.13]
TWO PLACE DECIMALS $\pm .01$ [.3] FOUR PLACE DECIMALS $\pm .0010$ [.025]

ANGLES
 $\pm 1^\circ$

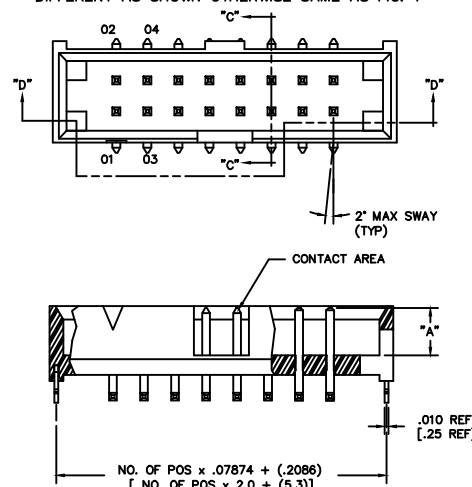
TITLE:
2mm C.L. SHROUDED
TERMINAL STRIP TO
MATE WITH CABLE

DWG NO:
STMM-1XX-XX-XX-D-XX-XX
SHEET 2 OF 3

FIG. 3

-SM: SURFACE MOUNT

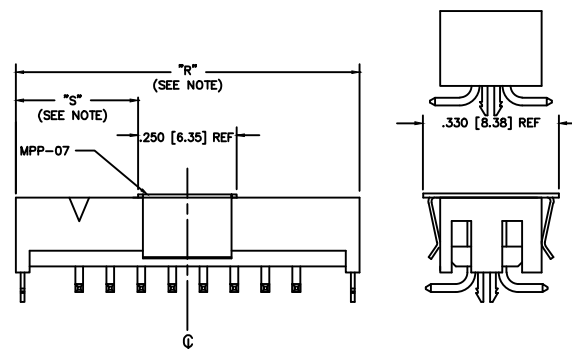
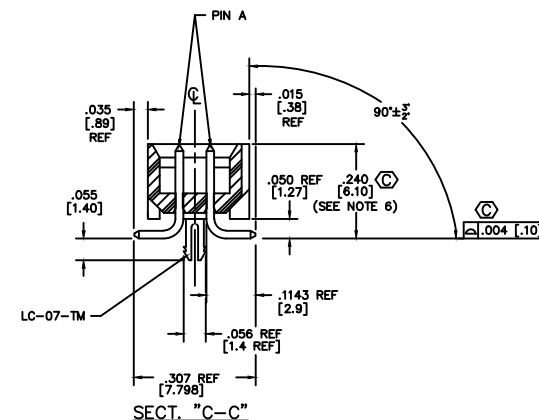
DIFFERENT AS SHOWN OTHERWISE SAME AS FIG. 1



SECTION "D-D"

TABLE 2

	LEAD STYLE	"A"	"B" REF	"C"	PIN #1	"L" REF TERMINAL LENGTH
SURFACE MOUNT	-01	.100 [2.54]	.172 [4.4]	.065 [1.65]	T-1S13-07-XX-2	.302 [7.67]
	-02	.120 [3.05]	.173 [4.4]	.085 [2.16]	T-1S13-20-XX-2	.323 [8.20]



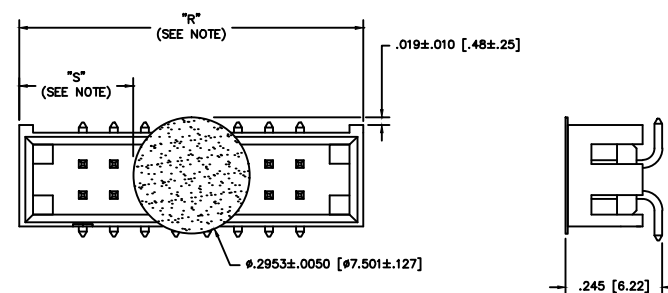
NOTE: "R" = USED MEASURED DIMENSION (REF)
"S" = $\{("R" - .250 [6.35]) / 2\} \pm .020 [.51]$

FIG. 5

-M: METAL PICK AND PLACE PAD

-SM OPTION ONLY, 3 POSITION MIN.

DIFFERENT AS SHOWN OTHERWISE SAME AS FIG. 1



NOTE: "R" = USED MEASURED DIMENSION (REF)
"S" = $\{("R" - .2953 [7.50]) / 2\} \pm .020 [.51]$

FIG. 6

-K OPTION (POLYIMIDE FILM PAD)

samtec

520 PARK EAST BLVD. NEW ALBANY, INDIANA 47150
PHONE (812) 944-6733 P.O. BOX 1147
CODE 55322

MADE BY: BRATCHER 2-21-94

STMM-1XX-XX-XX-D-XX-XX
SHEET 2 OF 3