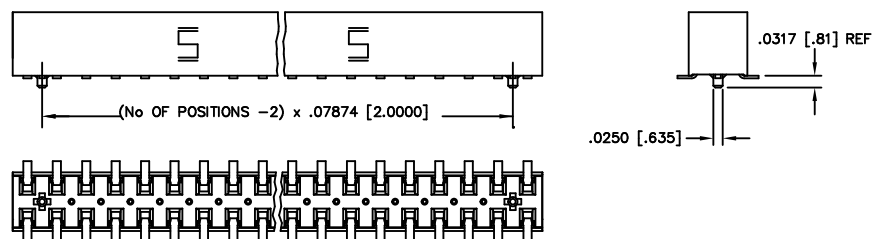


REV. AC

FIG 2

—A: OPTION (SEE NOTE 5)  
 MOLDED ALIGNMENT PIN (3 POS. MIN.)  
 (DIFFERENT AS SHOWN, OTHERWISE SAME AS FIG 1)



UNLESS OTHERWISE NOTED  
 DIMENSIONS ARE IN INCHES  
 TOLERANCES ARE:  
 ONE PLACE DECIMALS  $\pm .1$   
 TWO PLACE DECIMALS  $\pm .01$   
 THREE PLACE DECIMALS  $\pm .005$   
 FOUR PLACE DECIMALS  $\pm .0020$

TITLE:  
 DUAL ROW 2mm x  
 2mm ASSEMBLY

DWG NO:  
 TLE-1XX-XX-X-DV-X  
 SHEET 2 OF 2

FIG 3

—A: OPTION (SEE NOTE 5)  
 STAKED ALIGNMENT PIN (4 POS. MIN.)  
 (DIFFERENT AS SHOWN, OTHERWISE SAME AS FIG 1)

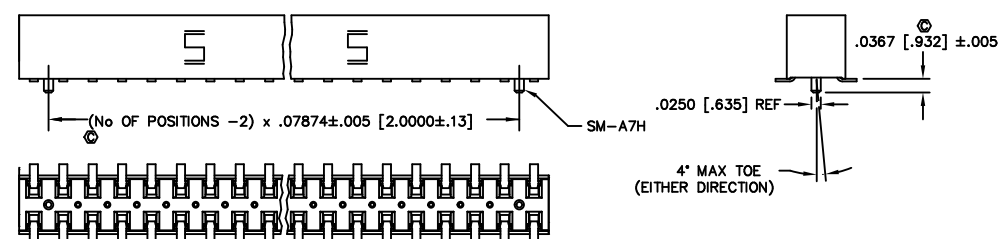
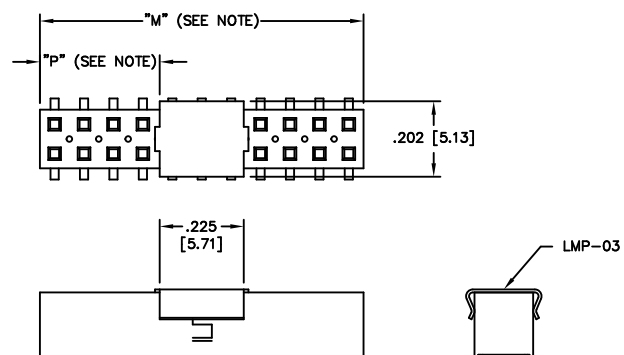


FIG 4

—P: OPTION  
 (4 POS. MIN.)  
 PICK & PLACE PAD  
 (DIFFERENT AS SHOWN, OTHERWISE SAME AS FIG 1)



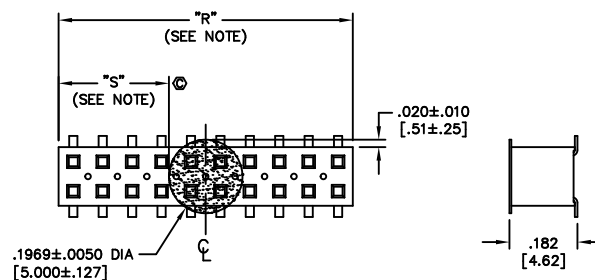
# **PROPRIETARY NOTE**

THIS DOCUMENT CONTAINS INFORMATION  
 CONFIDENTIAL AND PROPRIETARY TO  
 SAMTEC INC. AND SHALL NOT BE  
 REPRODUCED OR TRANSMITTED IN  
 ANY FORM OR BY ANY MEANS  
 ELECTRONIC OR MECHANICAL,  
 INCLUDING PHOTOCOPYING, RECORDING,  
 OR BY ANY INFORMATION STORAGE  
 AND RETRIEVAL SYSTEM, WITHOUT THE  
 WRITTEN CONSENT OF SAMTEC INC.

NOTE: "M" = USED MEASURED DIMENSION (REF)  
 "P" = ((M - .225 [5.71])/2)  $\pm .020$  [.51]

FIG 5

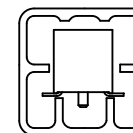
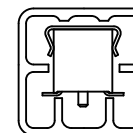
—K: POLYAMIDE FILM PAD  
 (3 POS. MIN.)



NOTE: "R" = USED MEASURED DIMENSION (REF)  
 "S" = ((R - .1969 [5.00])/2)  $\pm .020$  [.51]

PACKAGING VIEW

TABLE 1		
OPTION	PACKAGING TUBE	PLUG
ALL OPTIONS	PT-1-24-01-63	TP-24



**samtec**

EXISPROD\ASSEMBLY\2MM  
 TLE-ASM2

520 PARK EAST BLVD. NEW ALBANY, INDIANA 47150  
 PHONE (812) 944-6733 P.O. BOX 1147  
 CODE 55322

MADE BY:  
 D PURVIS 01-20-97

TLE-1XX-XX-X-DV-X  
 SHEET 2 OF 2