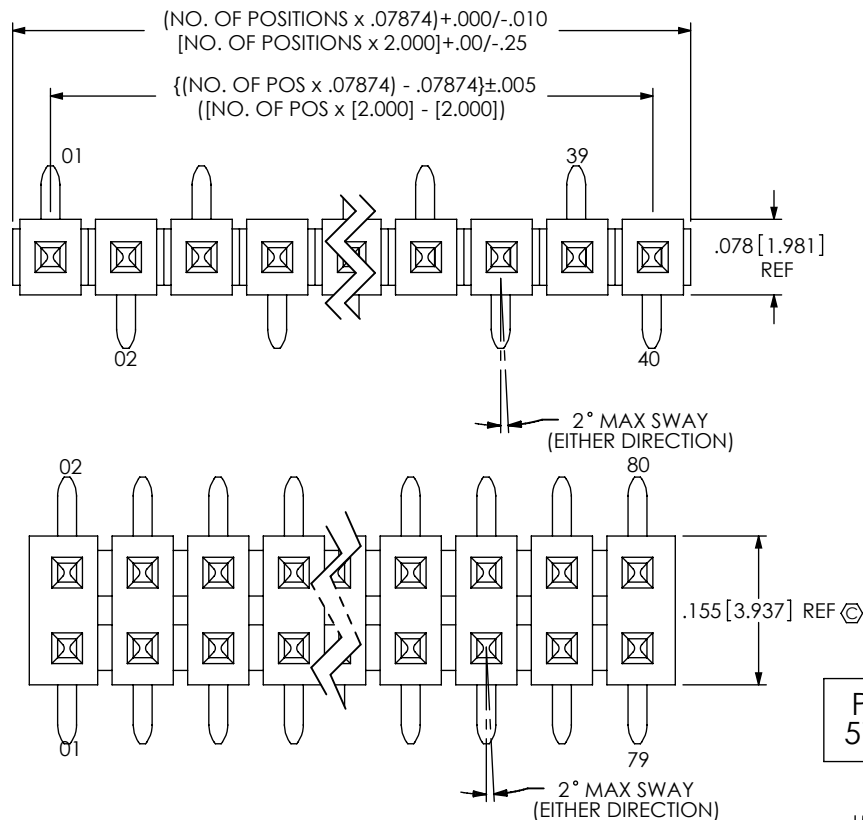


DO NOT
SCALE FROM
THIS PRINT



TMM-1XX-XX-XX-X-SM-XX-X

NO. OF POSITIONS PER ROW
-02 THRU -40

TERMINAL SPEC

-01: USE T-1S13-07-X-2
-04: USE T-1S13-04-X-2
-05: USE T-1S13-21-X-2
-06: USE T-1S13-08-X-2
(SEE NOTE 8)

PLATING SPECIFICATION

-G: 20μ" GOLD ON CONTACT AREA,
3μ" GOLD ON TAIL
-T: MATTE TIN ON CONTACT AND TAIL
-S: 30μ" SELECTIVE GOLD ON
CONTACT, MATTE TIN ON TAIL
-L: 15μ" SELECTIVE GOLD ON
CONTACT, MATTE TIN ON TAIL
-F: 3μ" SELECTIVE GOLD ON
CONTACT, MATTE TIN ON TAIL
-H: 30μ" GOLD ON CONTACT,
3μ" GOLD MIN ON TAIL
-SM: 30μ" SELECTIVE GOLD ON
CONTACT, MATTE TIN ON TAIL
-TM: MATTE TIN ON CONTACT AND TAIL
-LM: 15μ" SELECTIVE GOLD ON
CONTACT, MATTE TIN ON TAIL
-FM: 3μ" SELECTIVE GOLD ON
CONTACT, MATTE TIN ON TAIL

OPTION

-P: PICK & PLACE PAD
(AVAILABLE ON POSITIONS
-03 THRU -40) (SEE SHEET 2, FIG 2)
*-M: METAL PICK & PLACE PAD
(SEE SHEET 2, FIG 2) (4 POS. MIN)
(-T & -TM PLATING WITH -M
OPTION AVAILABLE TO EXISTING
CUSTOMERS ONLY AS OF REV BP.
DO NOT DESIGN IN)
-A: ALIGNMENT PIN
(SEE SHEET 2, FIG 3)
(5 POS. PER ROW MINIMUM)
(NOT AVAILABLE ON SINGLE
BODY SPECIFICATION)
-TR: TAPE & REEL (AVAILABLE ON
POS -03 THRU 36, POS 37 THRU
-40 AVAILABLE TO EXISTING
CUSTOMERS ONLY)
(SEE SHEET 3)
OPTION
POLARIZED SPECIFY POS-XX AS
POS TO BE OMITTED
OPTION
-SM: SURFACE MOUNT
BODY SPECIFICATION
-S: SINGLE (TMM-50-S)
-D: DOUBLE (TMM-50-D)

* FOR EXISTING CUSTOMERS ONLY

TABLE 2

LEAD STYLE	"A" POST	"B" (OAL)	"C"
-01	.126 [3.20]	.302 [7.67]	.100 [2.54]
-04	.075 [1.91]	.255 [6.48]	.100 [2.54]
-05	.065 [1.65]	.323 [8.20]	.080 [2.03]
-06	.168 [4.27]	.476 [12.09]	.100 [2.54]

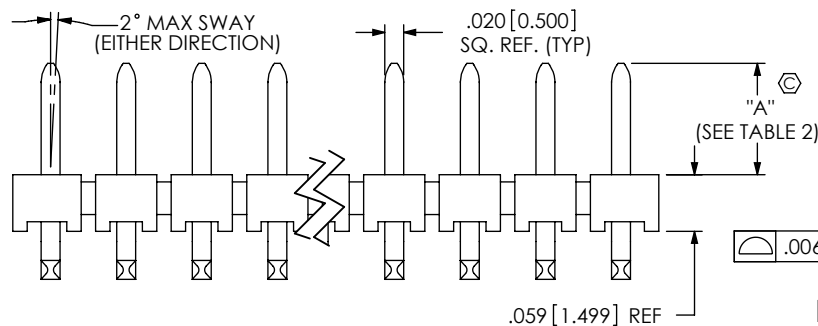
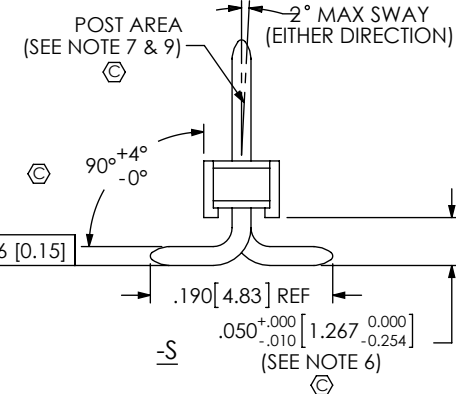
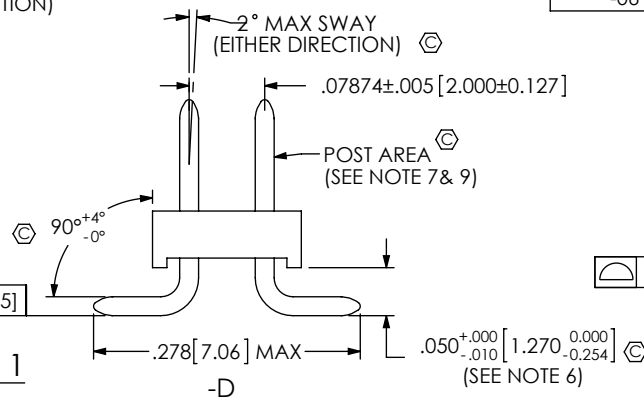
PATENT NUMBERS
5713755 / 5961339


FIG 1



NOTES:

- ⊗ REPRESENTS A CRITICAL DIMENSION.
- MAX. PIN ROTATION IN BODY: 2°
- PUSHOUT FORCE SHALL BE 1 lb MIN.
- ALL DIMENSIONS IN BRACKETS [] TO BE MILLIMETERS.
- PACKAGE POSITIONS 03-40 IN TUBES; LAYER PACKAGE -02 POSITION.
- .050 [1.27] DIMS TO BE CHECKED AT BEND RADIUS, NOT AT END OF PIN
- PINS TO BE INSERTED TAIL SIDE FIRST TO AVOID SCRATCHES ON CONTACT
- SHEAR TAILS FOR -05 & -06 LEAD STYLE
- NO BANDOLIER MARKS ARE ALLOWED IN THE POST AREA.
- MAX. CUT FLASH: .010 [2.5]

UNLESS OTHERWISE SPECIFIED,
DIMENSIONS ARE IN INCHES.

TOLERANCES ARE:

DECIMALS ANGLES
.XX: ± .01
.XXX: ± .005
.XXXX: ± .0020 2°

PROPRIETARY NOTE

THIS DOCUMENT CONTAINS INFORMATION
CONFIDENTIAL AND PROPRIETARY TO
SAMTEC, INC. AND SHALL NOT BE REPRODUCED
OR TRANSFERRED TO OTHER DOCUMENTS OR
DISCLOSED TO OTHERS OR USED FOR ANY
PURPOSE OTHER THAN THAT WHICH IT WAS
OBTAINED WITHOUT THE EXPRESSED WRITTEN
CONSENT OF SAMTEC, INC.

DO NOT SCALE DRAWING

SHEET SCALE: 4:1

MATERIAL
BODIES:
LCP UL 94 VO, COLOR BLACK
TERMINALS:
PHOSPHOR BRONZE

F:\DWG\MISC\MKTG\TMM-1XX-XX-XX-X-SM-XX-X-MKT.SLDDRW

samtec

520 PARK EAST BLVD, NEW ALBANY, IN 47150
PHONE: 812-944-6733 FAX: 812-948-5047
e-Mail: info@SAMTEC.com code 55322

DESCRIPTION:

2MM TERMINAL STRIP ASSEMBLY

DWG. NO.

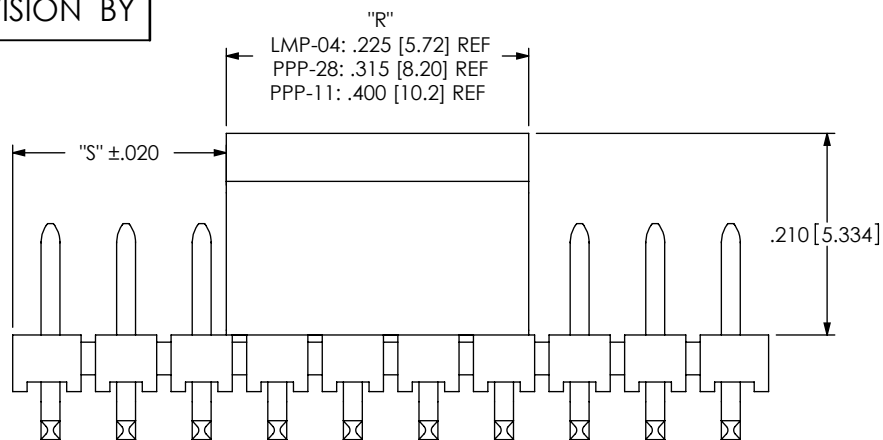
TMM-1XX-XX-XX-X-SM-XX-X

BY: REIDINGER

05-22-1991

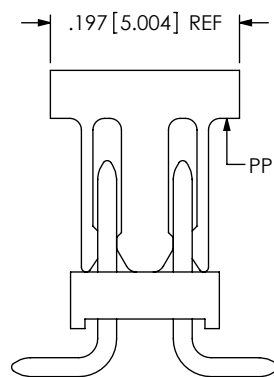
SHEET 1 OF 3

REVISION BY

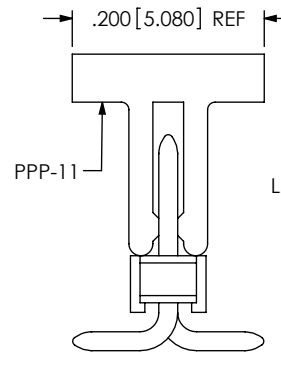


"R" = PAD SIZE ABOVE
 "S" = ((NO OF POS x .07874) - "R") / 2

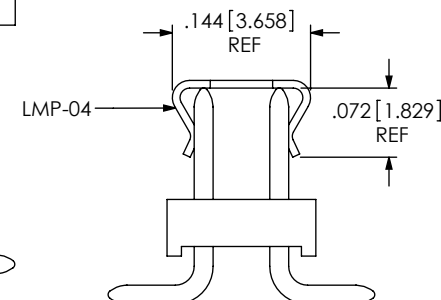
-P: PICK & PLACE PAD



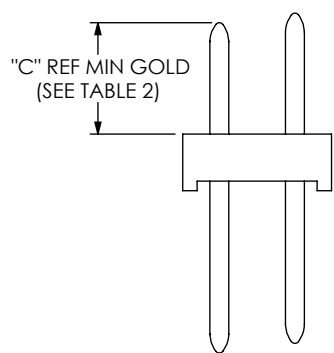
DOUBLE
 FIG 2



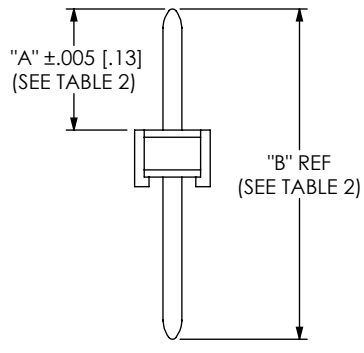
SINGLE



-M: PICK & PLACE PAD
 DOUBLE ONLY

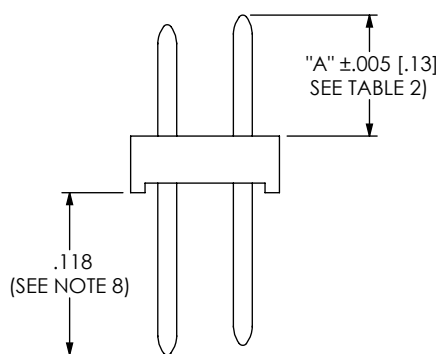


-D

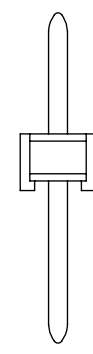


-S

IN-PROCESS 1



-D



-S

IN-PROCESS 2
 -05 & -06 LEAD STYLE ONLY

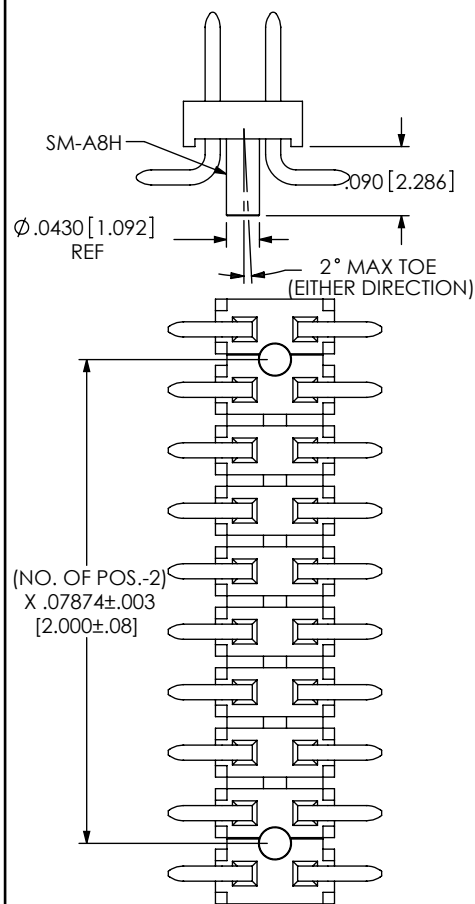
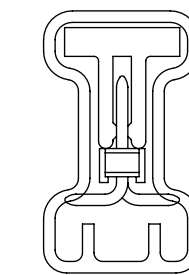
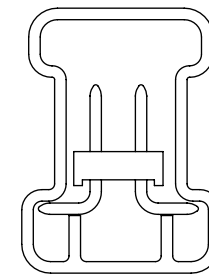


FIG 3
 -A: ALIGNMENT PIN
 (5 POS. PER ROW MINIMUM)

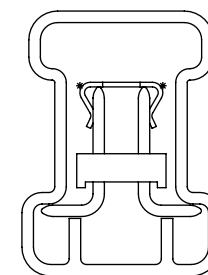
F:\DWG\MISC\MKTG\TMM-1XX-XX-XX-X-SM-XX-X-MKT.SLDDRW



PT-1-24-01-17
 TMM-1XX-XX-X-X-SM-S
 TMM-1XX-XX-X-X-SM-S-P



PT-1-24-02-17
 TMM-1XX-XX-X-X-SM-D



PT-1-24-02-17
 TMM-1XX-XX-X-X-SM-D-M

TUBE VIEW

TABLE 1 (SEE NOTE 5)		
OPTION	PKG TUBE	PLUG
-S, -S-P	PT-1-24-01-17	TP-24
-D, -D-A, -D-M, -D-A-M, -D-P, D-A-P	PT-1-24-02-17	TP-09

PROPRIETARY NOTE

THIS DOCUMENT CONTAINS INFORMATION CONFIDENTIAL AND PROPRIETARY TO SAMTEC, INC. AND SHALL NOT BE REPRODUCED OR TRANSFERRED TO OTHER DOCUMENTS OR DISCLOSED TO OTHERS OR USED FOR ANY PURPOSE OTHER THAN THAT WHICH IT WAS OBTAINED WITHOUT THE EXPRESSED WRITTEN CONSENT OF SAMTEC, INC.

DO NOT SCALE DRAWING

SHEET SCALE: 4:1

samtec

520 PARK EAST BLVD, NEW ALBANY, IN 47150
 PHONE: 812-944-6733 FAX: 812-948-5047
 e-Mail info@SAMTEC.com code 55322

DESCRIPTION:

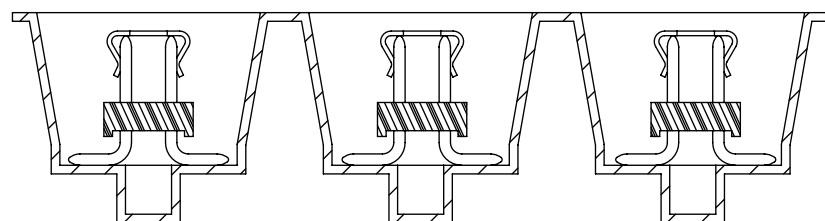
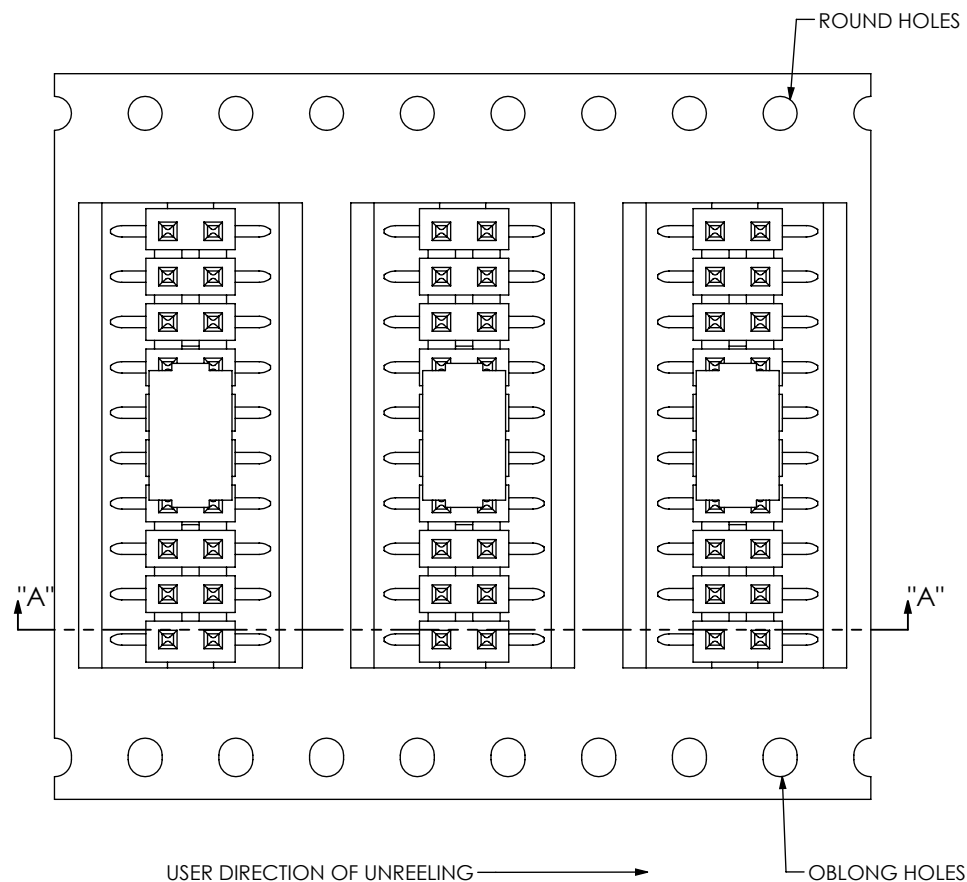
2MM TERMINAL STRIP ASSEMBLY

DWG. NO.

TMM-1XX-XX-XX-X-SM-XX-X

BY: REIDINGER 05-22-1991

SHEET 2 OF 3



TAPE AND REEL VIEW

<p>PROPRIETARY NOTE</p> <p>THIS DOCUMENT CONTAINS INFORMATION CONFIDENTIAL AND PROPRIETARY TO SAMTEC, INC. AND SHALL NOT BE REPRODUCED OR TRANSFERRED TO OTHER DOCUMENTS OR DISCLOSED TO OTHERS OR USED FOR ANY PURPOSE OTHER THAN THAT WHICH IT WAS OBTAINED WITHOUT THE EXPRESSED WRITTEN CONSENT OF SAMTEC, INC.</p> <p>DO NOT SCALE DRAWING</p> <p>SHEET SCALE: 1:1</p>		<p>samtec</p> <p>520 PARK EAST BLVD, NEW ALBANY, IN 47150 PHONE: 812-944-6733 FAX: 812-948-5047 e-Mail: info@SAMTEC.com code 55322</p>	
		<p>DESCRIPTION:</p> <p>2MM TERMINAL STRIP ASSEMBLY</p>	
		<p>DWG. NO.</p> <p>TMM-1XX-XX-XX-X-SM-XX-X</p>	
		<p>BY: REIDINGER 05-22-1991</p>	
		<p>SHEET 3 OF 3</p>	