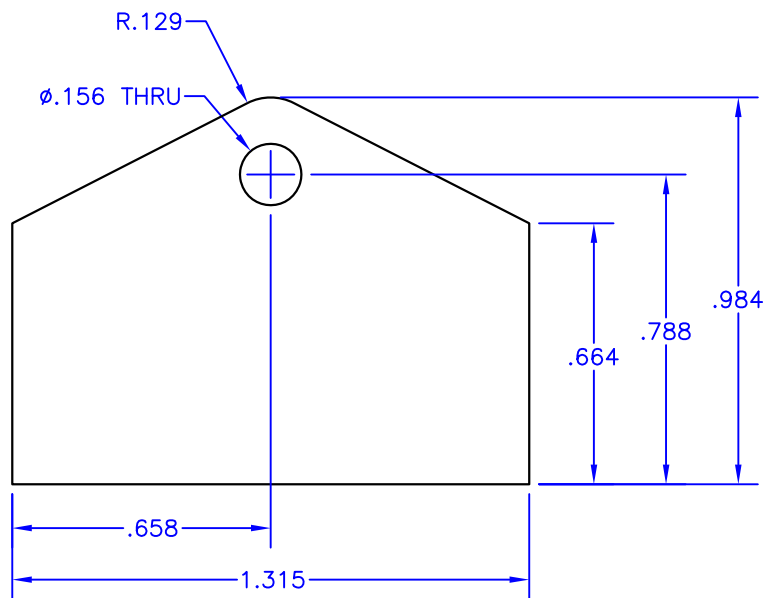


4

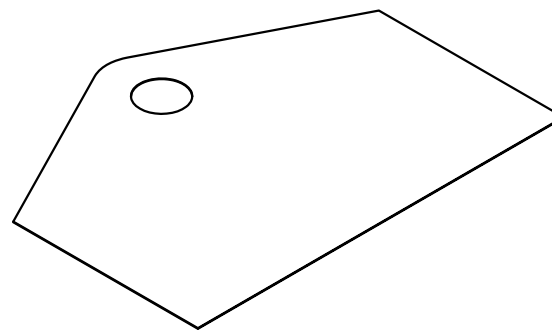
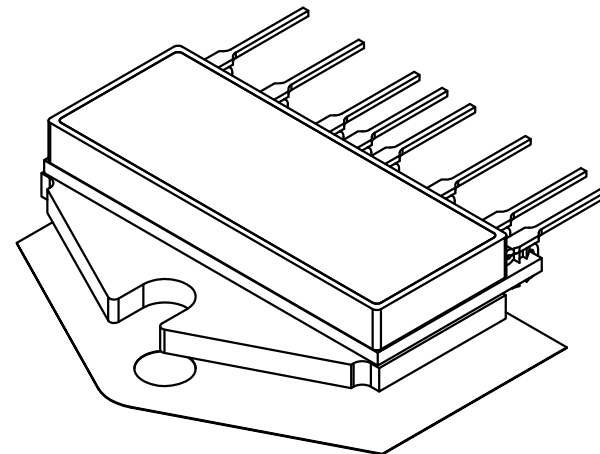
3

2

1



.003
See Notes 2 & 3.



$^{\circ}\text{C}/\text{W}-\text{in}^2$

NOTES:

1. Unless otherwise noted, all dimensions are in inches.
2. Film Material: .002 thick Kapton® MT
Dielectric strength – 5200 VAC/mil
3. Interface Material: .0005 thick phase-change thermal compound, both sides.
Maximum shipping & storage temperature – 40°C
Reflow temperature – 60°C
Maximum recommended service temperature – 200°C
4. Thermal impedance: .201 $^{\circ}\text{C}/\text{W}-\text{in}^2$ (1.30 $^{\circ}\text{C}/\text{W}-\text{cm}^2$) @ 20psi
5. Thermal washers shall be packaged in quantities of 10 with oversize separators between them.
6. Used with SIP packages (Apex designators: DQ & DR).
7. Power Devices part no. KA-132-098-APX
8. Supplier is to label each plastic box with the Apex part number.

TOLERANCES - UNLESS
OTHERWISE SPECIFIED

.XX = ±.05 [.002]
.XXX = ±.005 [.0002]
ANG. = ±2°



TITLE:

THERMAL WASHER, SIP

MODEL:

TW13

SUBJECT:

MECHANICAL DRAWING

ENGINEER:

D-M

DRAWN BY:

P.ECK

DCA:

12438

SPL

OF

1

FILENAME:

TW13

REV:

F

DATE:

14NOV12

4

3

2

1