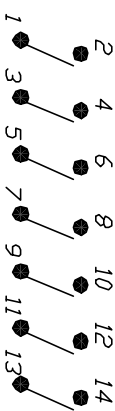
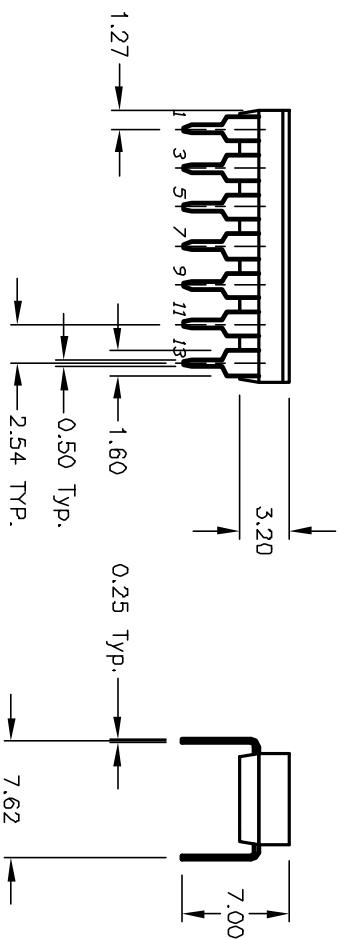


Pos. 1 Designate
Pin #1 Location

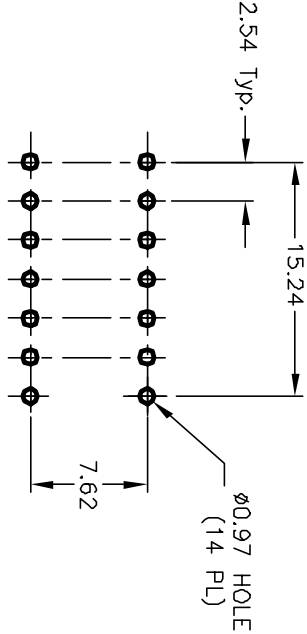


CIRCUIT 7 POS.

NOTES:

1. ALL DIMENSIONS IN MM
2. GENERAL TOLERANCE: X.X=±0.4
X.XX=±0.25
3. TERM. NOS. FOR REFERENCE ONLY.
4. CONTACT RATINGS: 25mA @24VDC. (Switch)
100mA @50VDC. (Carry)
5. CONTACT MATERIAL:
CONTACTS: (MOVABLE) Copper w/Gold Plate
TERMINALS: BRASS w/Gold Plate
6. INSULATION RESISTANCE;
100 Mega-ohms min. @500VDC
7. CONTACT RESISTANCE;
50 MILLI-ohms typical @2-4VDC @100mA
8. OPERATING TEMP.:-40°C to +80°C
9. PACKAGE: IN DISPENSING TUBES
WITH ALL POLES IN THE "OFF" POSITION.

RECOMMENDED P.C.B. LAYOUT



REVISED E-LOGD				TITLE			
B	12226	RELEASED FOR PRODUCTION	7/5/02	CJB	KAJ07 SH GT (GOLD)		
A	12226	DESCRIPTION	6/14/02	CJB			
REV.	ECN No.	DATE	CHKD	SCALE	DATE	DR	REV
THE INFORMATION CONTAINED IN THIS DOCUMENT IS PROPRIETARY TO E-SWITCH AND IS NOT TO BE COPIED OR TRANSFERRED				2:1	6/14/02	CJB	B

E-SWITCH®